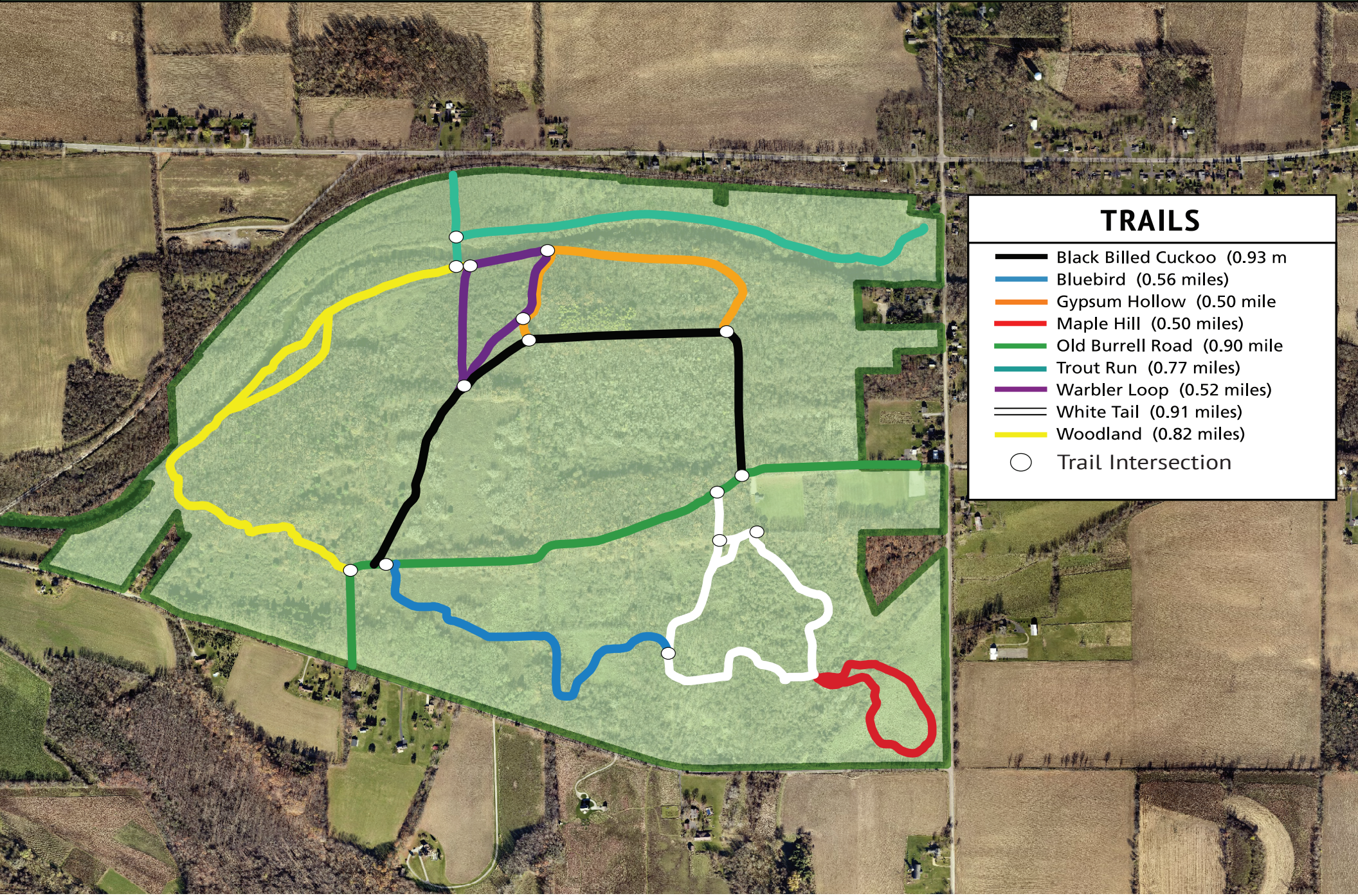


OATKA CREEK PARK

Park Staff: 585-509-2843

for more information:
monroecounty.gov/parks
585-753-PARK (7275)



TRAILS

- Black Billed Cuckoo (0.93 m)
- Bluebird (0.56 miles)
- Gypsum Hollow (0.50 mile)
- Maple Hill (0.50 miles)
- Old Burrell Road (0.90 mile)
- Trout Run (0.77 miles)
- Warbler Loop (0.52 miles)
- White Tail (0.91 miles)
- Woodland (0.82 miles)
- Trail Intersection

OATKA CREEK PARK

Park Staff: 585-509-2843

for more information:
monroecounty.gov/parks
585-753-PARK (7275)

PARK HOURS:

- Park Hours are from **6 am until 11 pm.**
- Park access and services vary seasonally, please contact 753- PARK (7275) for more details.

GENERAL PARK RULES:

- **Carry-in Carry-out rule:**
which means you must take all your garbage with you for disposal after leaving the park.
- **All pets must be leashed and you are responsible for cleaning up after them.**

If you have rented a LODGE:

- Park Staff will unlock the lodge for you prior to your arrival time stated on your reservation confirmation.

Interested in renting a lodge or shelter?

- Try the online reservation system at monroecounty.gov/parks
or
- Call **585-753-PARK (7275)**

Please be aware of seasonal changes in trail conditions and be prepared for natural conditions such as mosquitoes and poison ivy in some areas.

Trails and Pathways are multiple use, unless noted otherwise. Enjoy walking, running, horseback riding and cross-country skiing.