

MIXED RECYCLING

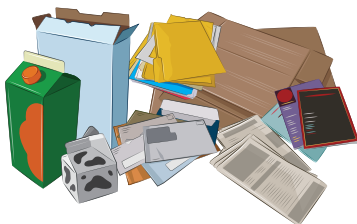


Adam J. Bello
County Executive

✓ **EMPTY** ✓ **CLEAN** ✓ **UNBAGGED**

PAPER

- Newspapers and inserts
- Magazines and catalogs
- Softcover books
- Junk mail & office paper
- Gable-top cartons
- Pizza boxes
- Cardboard
(flatten not to exceed 2x4 ft.)
- Paper food boxes: cereal, cracker, pasta, etc. (flatten)
- Shredded paper in paper bag only



METAL & GLASS

- Metal cookware & foil-ware
- Metal food & beverage cans
- Glass bottles & jars
- Empty aerosol cans
- No window, mirror, baking glass



PLASTIC

- Bottles (beverage, soap, squeeze & spray)
- Jugs (milk, detergent)
- Jars
- Tubs (dairy products)
- Reattach caps, lids & spray pumps
- No foam (egg cartons, etc.)
- No Rx bottles*
- No straws or utensils
- No bags*
- No coffee pods
- No drink cups



KEEP OUT

- Cords / Metal Chains *
- Rechargeable Batteries *
- Electronics *
- Sharps / Syringes *
- Plastic Bags / Film *
- Clothing *
- Propane Tanks *
- Food / Liquid Waste
- Ropes / Hoses
- Tarps / Pool Covers
- Plastic Clamshells / Takeout Containers



*Find out more at:
www.monroecounty.gov/ecopark

FREQUENTLY ASKED QUESTIONS

Q | Can I recycle all plastics marked #1- #7?

A | The recycling symbol that includes a number does NOT necessarily indicate recyclability curbside. Recycle plastics by their shape - empty bottles, jugs, jars and tubs. For more information visit: www.monroecounty.gov/recycling

Q | Should I separate my recyclables using plastic bags?

A | NO, Keep recyclables unbagged and loose in container. Plastic bags, cords, ropes, etc. wrap around recycling machinery causing facility downtime and also contaminate recyclable paper. Plastic bags and product wrapping may be recycled at most large retail outlets.

Q | Can I recycle caps and lids from containers?

A | Yes. After rinsing, caps and lids should be reattached.

Q | Can Styrofoam™ egg cartons, coffee cups, and packing material with a #4 or #6 on it be recycled?

A | Foam cannot be placed in recycling bins. The ecopark will accept clean, white, block packaging foam only. Visit www.monroecounty.gov/ecopark for more information.

Q | Can I place small electronics in my recycling bin or TVs and the like at the curb?

A | Electronics are not accepted curbside. Visit www.monroecounty.gov/ecopark for more information. Large metal appliances can be recycled by calling your waste provider.



Q | Can pizza boxes be recycled?

A | Yes, clean pizza boxes can be recycled. If the bottom of the box is covered in grease and food, tear off, dispose and only recycle the clean lid.

Q | Should I place my recyclables at the curb on very windy days or if a storm is forecast?

A | Recyclables that blow around the neighborhood are litter. Use your good judgement on whether to delay your recycling.

Q | Where can I get a new/replacement recycling container?

A | Contact your waste collection provider. Containers may be purchased at home improvement stores but always check with your recycling collector first to ensure program compatibility.

MORE QUESTIONS?

**Call your waste collection provider
or email mcdes@monroecounty.gov**

www.monroecounty.gov/recycling



Printed on recycled paper



@monroecounty.gov/ecopark