



# **VOTER TURNOUT SUMMARY REPORT 2007 GENERAL ELECTION**

Monroe County Board of Elections  
39 West Main Street, Rochester, New York 14614

**December 13, 2007**

Peter M. Quinn  
Commissioner of Elections

Thomas F. Ferrarese  
Commissioner of Elections

# CONTENTS DESCRIPTION

General Summary .....	Page 1
Democratic Summary .....	Page 12
Republican Summary .....	Page 18
Independence Summary .....	Page 24
Conservative Summary .....	Page 30
Working Families Summary .....	Page 36
Blanks Summary .....	Page 42
Historical Data.....	Page 48

# **GENERAL SUMMARY**

2007 GENERAL ELECTION  
VOTER TURNOUT BY GENDER

LT/LD SUMMARY

LEGISLATIVE DISTRICT OR TOWN <b>CITY</b>	TOTAL VOTERS			MALES			FEMALES		
	VOTED	REGISTERED	TURNOUT	VOTED	REGISTERED	TURNOUT	VOTED	REGISTERED	TURNOUT
Leg. Dist. 06	944	2,870	32.89 %	447	1,239	36.08 %	497	1,631	30.47 %
Leg. Dist. 07	522	1,456	35.85 %	251	660	38.03 %	271	796	34.05 %
Leg. Dist. 21	2,705	11,642	23.23 %	1,254	5,032	24.92 %	1,451	6,610	21.95 %
Leg. Dist. 22	1,067	8,283	12.88 %	419	3,340	12.54 %	648	4,943	13.11 %
Leg. Dist. 23	3,313	11,114	29.81 %	1,676	5,343	31.37 %	1,637	5,771	28.37 %
Leg. Dist. 24	2,084	6,539	31.87 %	1,005	3,020	33.28 %	1,079	3,519	30.66 %
Leg. Dist. 25	1,808	8,788	20.57 %	825	3,878	21.27 %	983	4,910	20.02 %
Leg. Dist. 26	1,612	6,301	25.58 %	730	2,695	27.09 %	882	3,606	24.46 %
Leg. Dist. 27	2,577	11,971	21.53 %	1,069	4,881	21.90 %	1,508	7,090	21.27 %
Leg. Dist. 28	1,638	8,438	19.41 %	775	3,532	21.94 %	863	4,906	17.59 %
Leg. Dist. 29	1,931	10,038	19.24 %	830	4,107	20.21 %	1,101	5,931	18.56 %
<b>TOTAL:</b>	<b>20,201</b>	<b>87,440</b>	<b>23.10 %</b>	<b>9,281</b>	<b>37,727</b>	<b>24.60 %</b>	<b>10,920</b>	<b>49,713</b>	<b>21.97 %</b>
<b>TOWNS</b>									
Brighton	7,794	20,940	37.22 %	3,603	9,328	38.63 %	4,191	11,612	36.09 %
Chili	6,120	17,763	34.45 %	3,060	8,324	36.76 %	3,060	9,439	32.42 %
Clarkson	1,317	3,593	36.65 %	667	1,732	38.51 %	650	1,861	34.93 %
East Rochester	1,673	3,586	46.65 %	764	1,581	48.32 %	909	2,005	45.34 %
Gates	6,267	17,164	36.51 %	2,948	7,791	37.84 %	3,319	9,373	35.41 %
Greece	15,074	58,719	25.67 %	7,445	26,829	27.75 %	7,629	31,890	23.92 %
Hamlin	1,811	5,020	36.08 %	944	2,420	39.01 %	867	2,600	33.35 %
Henrietta	6,525	19,723	33.08 %	3,229	9,273	34.82 %	3,296	10,450	31.54 %
Irondequoit	13,673	33,083	41.33 %	6,473	14,671	44.12 %	7,200	18,412	39.10 %
Mendon	2,743	5,924	46.30 %	1,353	2,819	48.00 %	1,390	3,105	44.77 %
Ogden	4,018	11,751	34.19 %	2,048	5,563	36.81 %	1,970	6,188	31.84 %
Parma	3,600	9,692	37.14 %	1,776	4,657	38.14 %	1,824	5,035	36.23 %
Penfield	7,940	23,275	34.11 %	3,964	10,780	36.77 %	3,976	12,495	31.82 %
Perinton	10,617	31,330	33.89 %	5,316	14,575	36.47 %	5,301	16,755	31.64 %
Pittsford	7,991	18,518	43.15 %	3,844	8,596	44.72 %	4,147	9,922	41.80 %
Riga	1,138	3,624	31.40 %	573	1,710	33.51 %	565	1,914	29.52 %
Rush	1,069	2,414	44.28 %	533	1,162	45.87 %	536	1,252	42.81 %
Sweden	2,308	6,012	38.39 %	1,131	2,808	40.28 %	1,177	3,204	36.74 %
Webster	10,191	26,567	38.36 %	4,966	12,227	40.62 %	5,225	14,340	36.44 %
Wheatland	846	3,087	27.41 %	426	1,432	29.75 %	420	1,655	25.38 %
<b>TOTAL:</b>	<b>112,715</b>	<b>321,785</b>	<b>35.03 %</b>	<b>55,063</b>	<b>148,278</b>	<b>37.13 %</b>	<b>57,652</b>	<b>173,507</b>	<b>33.23 %</b>
<b>GRAND TOTAL:</b>	<b>132,916</b>	<b>409,225</b>	<b>32.48 %</b>	<b>64,344</b>	<b>186,005</b>	<b>34.59 %</b>	<b>68,572</b>	<b>223,220</b>	<b>30.72 %</b>

2007 GENERAL ELECTION  
VOTER TURNOUT BY PARTY

LT/LD SUMMARY

Part 1 of 2

LEGISLATIVE DISTRICT OR TOWN	DEMOCRAT			REPUBLICAN			INDEPENDENCE		
	VOTED	REGISTERED	TURNOUT	VOTED	REGISTERED	TURNOUT	VOTED	REGISTERED	TURNOUT
<b>CITY</b>									
Leg. Dist. 06	387	1,076	35.97 %	322	859	37.49 %	24	103	23.30 %
Leg. Dist. 07	225	580	38.79 %	195	459	42.48 %	9	56	16.07 %
Leg. Dist. 21	1,596	6,952	22.96 %	581	1,764	32.94 %	50	390	12.82 %
Leg. Dist. 22	894	6,141	14.56 %	94	585	16.07 %	7	137	5.11 %
Leg. Dist. 23	1,889	5,506	34.31 %	727	2,244	32.40 %	76	488	15.57 %
Leg. Dist. 24	1,222	3,421	35.72 %	413	1,207	34.22 %	46	253	18.18 %
Leg. Dist. 25	1,357	6,194	21.91 %	231	860	26.86 %	23	184	12.50 %
Leg. Dist. 26	784	3,134	25.02 %	518	1,387	37.35 %	29	208	13.94 %
Leg. Dist. 27	1,911	8,559	22.33 %	372	1,167	31.88 %	32	289	11.07 %
Leg. Dist. 28	966	4,829	20.00 %	383	1,385	27.65 %	32	257	12.45 %
Leg. Dist. 29	1,236	6,337	19.50 %	436	1,487	29.32 %	33	232	14.22 %
<b>TOTAL:</b>	<b>12,467</b>	<b>52,729</b>	<b>23.64 %</b>	<b>4,272</b>	<b>13,404</b>	<b>31.87 %</b>	<b>361</b>	<b>2,597</b>	<b>13.90 %</b>
<b>TOWNS</b>									
Brighton	3,667	8,926	41.08 %	2,505	6,121	40.92 %	147	624	23.56 %
Chili	1,690	5,292	31.93 %	3,029	7,069	42.85 %	111	541	20.52 %
Clarkson	321	905	35.47 %	715	1,606	44.52 %	30	152	19.74 %
East Rochester	533	1,093	48.76 %	671	1,250	53.68 %	62	146	42.47 %
Gates	2,089	5,903	35.39 %	2,837	6,146	46.16 %	118	513	23.00 %
Greece	4,107	16,923	24.27 %	7,479	23,266	32.15 %	300	1,980	15.15 %
Hamlin	328	1,169	28.06 %	1,111	2,314	48.01 %	45	199	22.61 %
Henrietta	2,061	6,559	31.42 %	3,016	7,163	42.11 %	157	685	22.92 %
Irondequoit	4,880	11,741	41.56 %	5,321	11,214	47.45 %	326	1,124	29.00 %
Mendon	733	1,548	47.35 %	1,315	2,679	49.09 %	69	205	33.66 %
Ogden	989	2,911	33.97 %	2,048	5,052	40.54 %	79	393	20.10 %
Parma	828	2,238	37.00 %	1,829	4,123	44.36 %	97	339	28.61 %
Penfield	2,293	6,637	34.55 %	3,690	9,263	39.84 %	187	825	22.67 %
Perinton	2,994	8,826	33.92 %	5,135	13,064	39.31 %	203	1,048	19.37 %
Pittsford	2,440	5,369	45.45 %	3,834	7,927	48.37 %	148	520	28.46 %
Riga	200	784	25.51 %	674	1,736	38.82 %	26	148	17.57 %
Rush	274	631	43.42 %	535	1,054	50.76 %	19	64	29.69 %
Sweden	662	1,718	38.53 %	1,102	2,448	45.02 %	70	236	29.66 %
Webster	3,015	7,663	39.34 %	4,425	10,196	43.40 %	279	991	28.15 %
Wheatland	245	887	27.62 %	410	1,252	32.75 %	11	111	9.91 %
<b>TOTAL:</b>	<b>34,349</b>	<b>97,723</b>	<b>35.15 %</b>	<b>51,681</b>	<b>124,943</b>	<b>41.36 %</b>	<b>2,484</b>	<b>10,844</b>	<b>22.91 %</b>
<b>GRAND TOTAL:</b>	<b>46,816</b>	<b>150,452</b>	<b>31.12 %</b>	<b>55,953</b>	<b>138,347</b>	<b>40.44 %</b>	<b>2,845</b>	<b>13,441</b>	<b>21.17 %</b>

2007 GENERAL ELECTION  
VOTER TURNOUT BY PARTY

LT/LD SUMMARY

Part 2 of 2

LEGISLATIVE DISTRICT OR TOWN	CONSERVATIVE			WORKING FAMILIES			BLANK		
	VOTED	REGISTERED	TURNOUT	VOTED	REGISTERED	TURNOUT	VOTED	REGISTERED	TURNOUT
<b>CITY</b>									
Leg. Dist. 06	37	85	43.53 %	0	12	0.00 %	174	735	23.67 %
Leg. Dist. 07	10	25	40.00 %	1	6	16.67 %	82	330	24.85 %
Leg. Dist. 21	33	93	35.48 %	1	50	2.00 %	444	2,393	18.55 %
Leg. Dist. 22	9	48	18.75 %	1	62	1.61 %	62	1,310	4.73 %
Leg. Dist. 23	34	98	34.69 %	7	35	20.00 %	580	2,743	21.14 %
Leg. Dist. 24	16	59	27.12 %	6	26	23.08 %	381	1,573	24.22 %
Leg. Dist. 25	14	49	28.57 %	1	40	2.50 %	182	1,461	12.46 %
Leg. Dist. 26	41	115	35.65 %	5	33	15.15 %	235	1,424	16.50 %
Leg. Dist. 27	16	74	21.62 %	6	67	8.96 %	240	1,815	13.22 %
Leg. Dist. 28	40	124	32.26 %	8	80	10.00 %	209	1,763	11.85 %
Leg. Dist. 29	28	104	26.92 %	3	54	5.56 %	195	1,824	10.69 %
<b>TOTAL:</b>	<b>278</b>	<b>874</b>	<b>31.81 %</b>	<b>39</b>	<b>465</b>	<b>8.39 %</b>	<b>2,784</b>	<b>17,371</b>	<b>16.03 %</b>
<b>TOWNS</b>									
Brighton	76	198	38.38 %	3	28	10.71 %	1,396	5,043	27.68 %
Chili	169	434	38.94 %	7	36	19.44 %	1,114	4,391	25.37 %
Clarkson	37	111	33.33 %	1	11	9.09 %	213	808	26.36 %
East Rochester	44	93	47.31 %	5	16	31.25 %	358	988	36.23 %
Gates	172	387	44.44 %	10	50	20.00 %	1,041	4,165	24.99 %
Greece	452	1,517	29.80 %	16	137	11.68 %	2,720	14,896	18.26 %
Hamlin	36	130	27.69 %	1	5	20.00 %	290	1,203	24.11 %
Henrietta	163	460	35.43 %	4	31	12.90 %	1,124	4,825	23.30 %
Irondequoit	313	655	47.79 %	11	51	21.57 %	2,822	8,298	34.01 %
Mendon	42	90	46.67 %	0	4	0.00 %	584	1,398	41.77 %
Ogden	143	353	40.51 %	9	22	40.91 %	750	3,020	24.83 %
Parma	104	260	40.00 %	11	35	31.43 %	731	2,697	27.10 %
Penfield	166	393	42.24 %	3	29	10.34 %	1,601	6,128	26.13 %
Perinton	165	450	36.67 %	1	27	3.70 %	2,119	7,915	26.77 %
Pittsford	92	190	48.42 %	5	15	33.33 %	1,472	4,497	32.73 %
Riga	31	80	38.75 %	1	6	16.67 %	206	870	23.68 %
Rush	22	43	51.16 %	0	6	0.00 %	219	616	35.55 %
Sweden	52	123	42.28 %	0	15	0.00 %	422	1,472	28.67 %
Webster	214	515	41.55 %	8	40	20.00 %	2,250	7,162	31.42 %
Wheatland	24	75	32.00 %	1	5	20.00 %	155	757	20.48 %
<b>TOTAL:</b>	<b>2,517</b>	<b>6,557</b>	<b>38.39 %</b>	<b>97</b>	<b>569</b>	<b>17.05 %</b>	<b>21,587</b>	<b>81,149</b>	<b>26.60 %</b>
<b>GRAND TOTAL:</b>	<b>2,795</b>	<b>7,431</b>	<b>37.61 %</b>	<b>136</b>	<b>1,034</b>	<b>13.15 %</b>	<b>24,371</b>	<b>98,520</b>	<b>24.74 %</b>

2007 GENERAL ELECTION  
VOTER TURNOUT BY AGE

LT/LD SUMMARY  
Part 1 of 2

LEGISLATIVE DISTRICT OR TOWN	NDOB			18-24			25-34			35-44		
	VOTED	REGISTERED	TURNOUT	VOTED	REGISTERED	TURNOUT	VOTED	REGISTERED	TURNOUT	VOTED	REGISTERED	TURNOUT
Leg. Dist. 06	25	60	41.67 %	9	165	5.45 %	68	502	13.55 %	126	497	25.35 %
Leg. Dist. 07	13	33	39.39 %	9	95	9.47 %	10	181	5.52 %	35	199	17.59 %
Leg. Dist. 21	120	270	44.44 %	61	897	6.80 %	270	2,443	11.05 %	386	2,428	15.90 %
Leg. Dist. 22	34	77	44.16 %	28	959	2.92 %	67	1,624	4.13 %	127	1,622	7.83 %
Leg. Dist. 23	114	207	55.07 %	74	811	9.12 %	399	2,940	13.57 %	467	2,110	22.13 %
Leg. Dist. 24	54	120	45.00 %	43	421	10.21 %	234	1,439	16.26 %	305	1,160	26.29 %
Leg. Dist. 25	48	115	41.74 %	41	972	4.22 %	150	1,619	9.26 %	194	1,599	12.13 %
Leg. Dist. 26	55	111	49.55 %	31	568	5.46 %	133	1,313	10.13 %	224	1,283	17.46 %
Leg. Dist. 27	67	161	41.61 %	68	1,064	6.39 %	171	2,150	7.95 %	335	2,482	13.50 %
Leg. Dist. 28	56	142	39.44 %	39	821	4.75 %	88	1,590	5.53 %	198	1,657	11.95 %
Leg. Dist. 29	83	197	42.13 %	31	894	3.47 %	110	1,728	6.37 %	199	1,928	10.32 %
TOTAL:	669	1,493	44.81 %	434	7,667	5.66 %	1,700	17,529	9.70 %	2,596	16,965	15.30 %
Brighton	261	485	53.81 %	141	1,541	9.15 %	395	2,694	14.66 %	911	3,269	27.87 %
Chili	230	388	59.28 %	101	1,484	6.81 %	338	2,518	13.42 %	802	3,201	25.05 %
Clarkson	2	8	25.00 %	31	267	11.61 %	49	408	12.01 %	239	827	28.90 %
East Rochester	107	147	72.79 %	46	306	15.03 %	152	577	26.34 %	267	671	39.79 %
Gates	87	184	47.28 %	119	1,257	9.47 %	294	2,382	12.34 %	663	2,877	23.04 %
Greece	582	1,367	42.57 %	310	4,798	6.46 %	653	7,707	8.47 %	1,412	9,690	14.57 %
Hamlin	19	33	57.58 %	50	463	10.80 %	90	621	14.49 %	273	981	27.83 %
Henrietta	63	117	53.85 %	131	1,494	8.77 %	401	2,910	13.78 %	872	3,696	23.59 %
Irondequoit	502	959	52.35 %	272	2,324	11.70 %	724	4,237	17.09 %	1,701	5,417	31.40 %
Mendon	17	27	62.96 %	73	576	12.67 %	86	485	17.73 %	450	1,147	39.23 %
Ogden	93	165	56.36 %	70	917	7.63 %	203	1,539	13.19 %	551	2,243	24.57 %
Parma	30	71	42.25 %	94	959	9.80 %	151	1,155	13.07 %	488	1,767	27.62 %
Penfield	229	453	50.55 %	138	1,650	8.36 %	316	2,455	12.87 %	1,026	4,166	24.63 %
Perinton	63	146	43.15 %	145	2,386	6.08 %	446	3,411	13.08 %	1,392	5,714	24.36 %
Pittsford	130	215	60.47 %	103	1,337	7.70 %	236	1,531	15.41 %	1,004	3,085	32.54 %
Riga	10	31	32.26 %	33	305	10.82 %	47	404	11.63 %	150	699	21.46 %
Rush	64	87	73.56 %	20	161	12.42 %	37	239	15.48 %	137	363	37.74 %
Sweden	35	61	57.38 %	58	561	10.34 %	127	814	15.60 %	289	1,014	28.50 %
Webster	244	458	53.28 %	182	1,773	10.27 %	501	3,080	16.27 %	1,430	5,066	28.23 %
Wheatland	9	27	33.33 %	23	276	8.33 %	47	412	11.41 %	89	510	17.45 %
TOTAL:	2,777	5,429	51.15 %	2,140	24,835	8.62 %	5,293	39,579	13.37 %	14,146	56,403	25.08 %
GRAND TOTAL:	3,446	6,922	49.78 %	2,574	32,502	7.92 %	6,993	57,108	12.25 %	16,742	73,368	22.82 %

2007 GENERAL ELECTION  
VOTER TURNOUT BY AGE

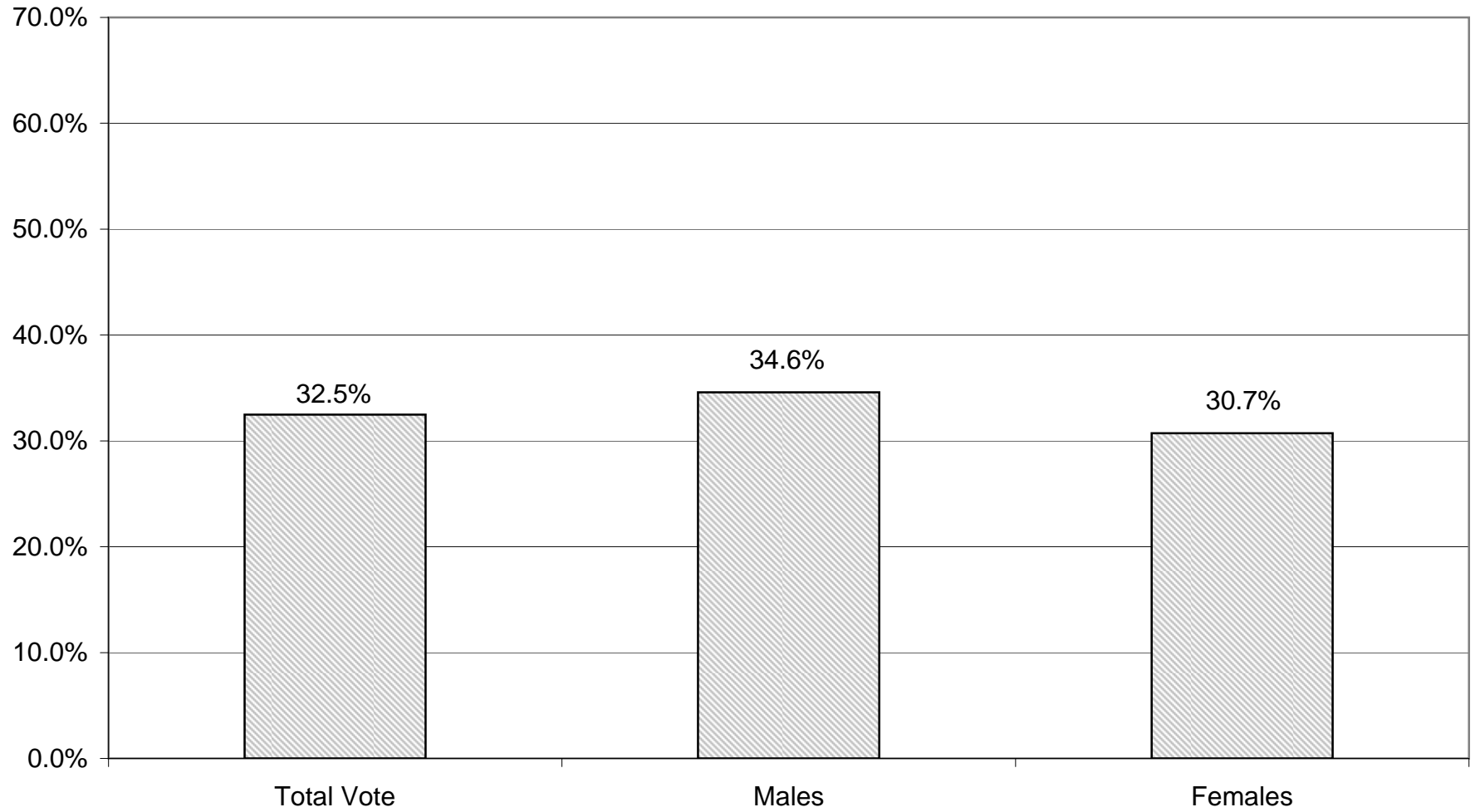
LT/LD SUMMARY  
Part 2 of 2

LEGISLATIVE  
DISTRICT

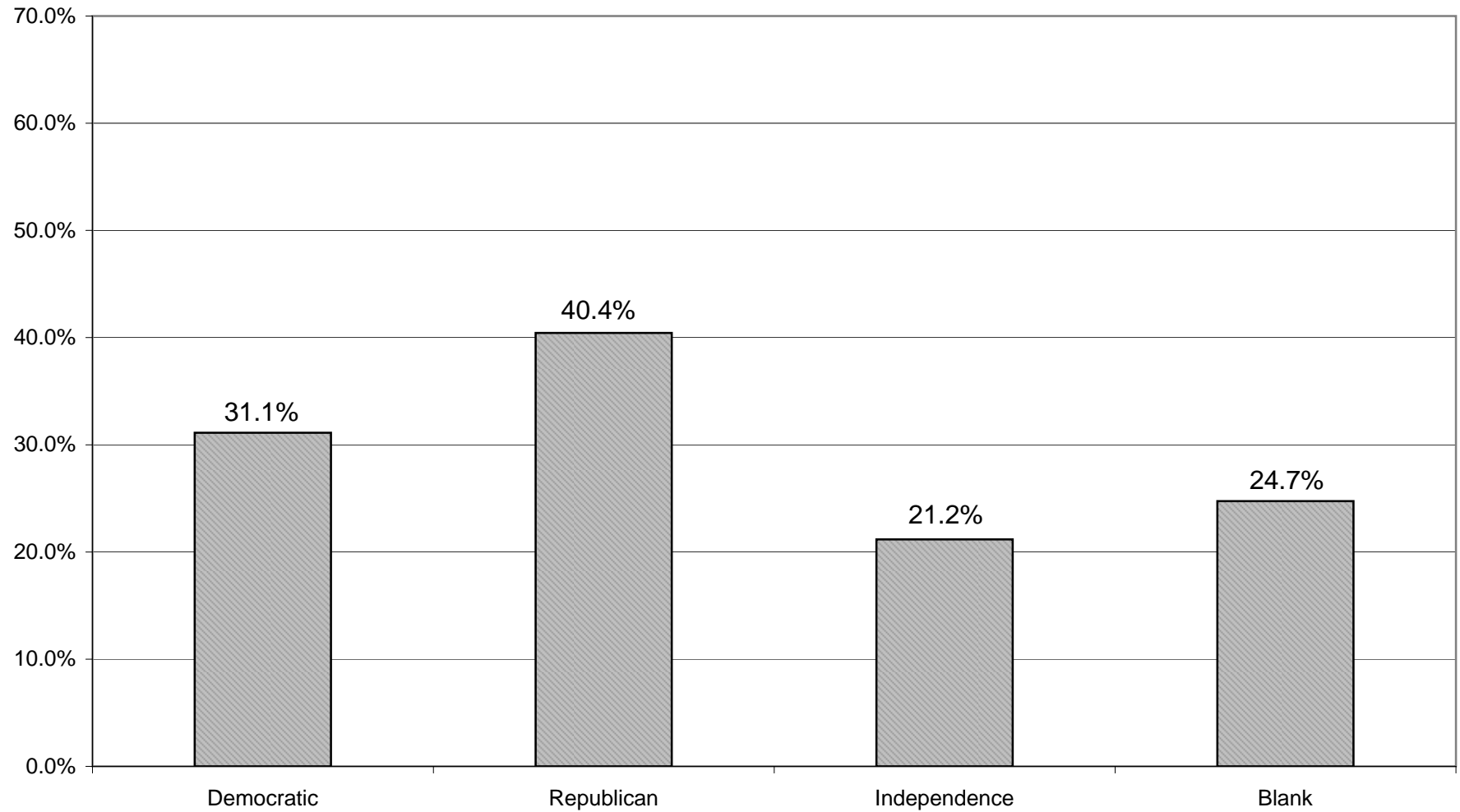
OR TOWN	45-54			55-64			65+		
	VOTED	REGISTERED	TURNOUT	VOTED	REGISTERED	TURNOUT	VOTED	REGISTERED	TURNOUT
Leg. Dist. 06	214	620	34.52 %	225	494	45.55 %	277	541	51.20 %
Leg. Dist. 07	104	298	34.90 %	154	308	50.00 %	197	327	60.24 %
Leg. Dist. 21	599	2,309	25.94 %	640	1,759	36.38 %	629	1,747	36.00 %
Leg. Dist. 22	249	1,708	14.58 %	293	1,248	23.48 %	269	1,142	23.56 %
Leg. Dist. 23	683	1,899	35.97 %	851	1,809	47.04 %	725	1,508	48.08 %
Leg. Dist. 24	475	1,283	37.02 %	504	1,071	47.06 %	469	1,151	40.75 %
Leg. Dist. 25	361	1,655	21.81 %	454	1,311	34.63 %	560	1,534	36.51 %
Leg. Dist. 26	406	1,327	30.60 %	383	910	42.09 %	380	904	42.04 %
Leg. Dist. 27	610	2,497	24.43 %	713	1,973	36.14 %	613	1,799	34.07 %
Leg. Dist. 28	442	1,828	24.18 %	369	1,257	29.36 %	446	1,228	36.32 %
Leg. Dist. 29	423	2,011	21.03 %	505	1,669	30.26 %	580	1,627	35.65 %
TOTAL:	4,566	17,435	26.19 %	5,091	13,809	36.87 %	5,145	13,508	38.09 %
Brighton	1,542	4,062	37.96 %	1,833	3,811	48.10 %	2,711	4,895	55.38 %
Chili	1,383	3,839	36.03 %	1,367	3,041	44.95 %	1,899	3,228	58.83 %
Clarkson	310	859	36.09 %	333	584	57.02 %	353	633	55.77 %
East Rochester	376	734	51.23 %	332	556	59.71 %	393	580	67.76 %
Gates	1,174	3,252	36.10 %	1,386	2,877	48.18 %	2,544	4,106	61.96 %
Greece	3,128	12,625	24.78 %	3,626	10,219	35.48 %	5,363	12,063	44.46 %
Hamlin	469	1,250	37.52 %	516	958	53.86 %	394	721	54.65 %
Henrietta	1,494	4,214	35.45 %	1,457	3,360	43.36 %	2,107	3,862	54.56 %
Irondequoit	2,951	6,681	44.17 %	3,045	5,675	53.66 %	4,478	7,519	59.56 %
Mendon	856	1,658	51.63 %	663	1,106	59.95 %	598	938	63.75 %
Ogden	1,059	2,979	35.55 %	979	2,031	48.20 %	1,063	1,860	57.15 %
Parma	936	2,348	39.86 %	886	1,699	52.15 %	1,015	1,667	60.89 %
Penfield	1,967	5,538	35.52 %	1,865	4,240	43.99 %	2,399	4,606	52.08 %
Perinton	2,327	7,012	33.19 %	2,678	6,152	43.53 %	3,566	6,486	54.98 %
Pittsford	1,848	4,372	42.27 %	1,843	3,521	52.34 %	2,827	4,353	64.94 %
Riga	292	909	32.12 %	288	674	42.73 %	318	612	51.96 %
Rush	239	620	38.55 %	280	490	57.14 %	292	445	65.62 %
Sweden	571	1,390	41.08 %	631	1,144	55.16 %	597	1,003	59.52 %
Webster	2,341	5,980	39.15 %	2,387	4,750	50.25 %	3,106	5,324	58.34 %
Wheatland	205	717	28.59 %	205	537	38.18 %	268	581	46.13 %
TOTAL:	25,468	71,039	35.85 %	26,600	57,425	46.32 %	36,291	65,482	55.42 %
GRAND TOTAL:	30,034	88,474	33.95 %	31,691	71,234	44.49 %	41,436	78,990	52.46 %



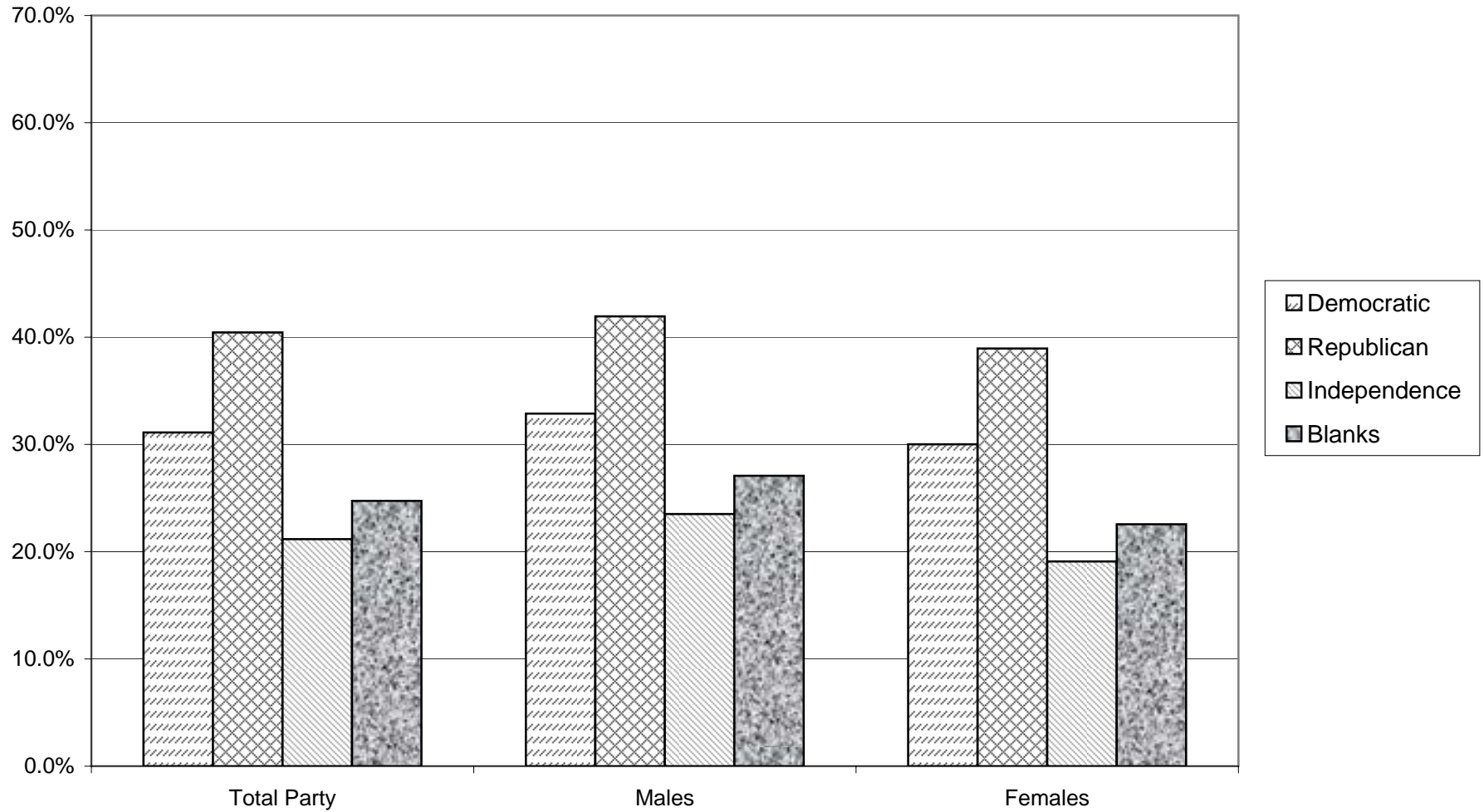
# VOTER TURNOUT - TOTAL AND BY GENDER 2007 GENERAL ELECTION



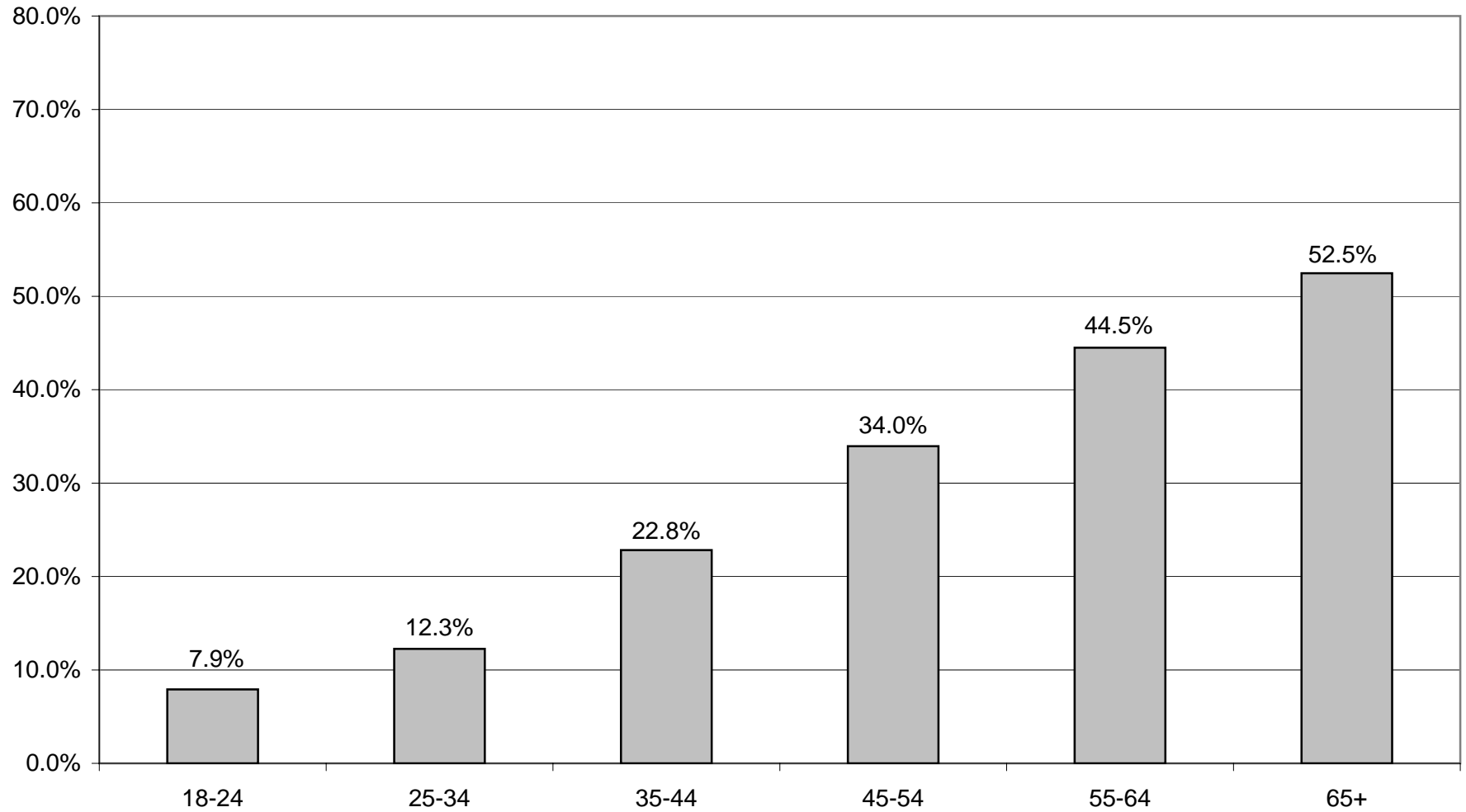
## VOTER TURNOUT BY PARTY 2007 GENERAL ELECTION



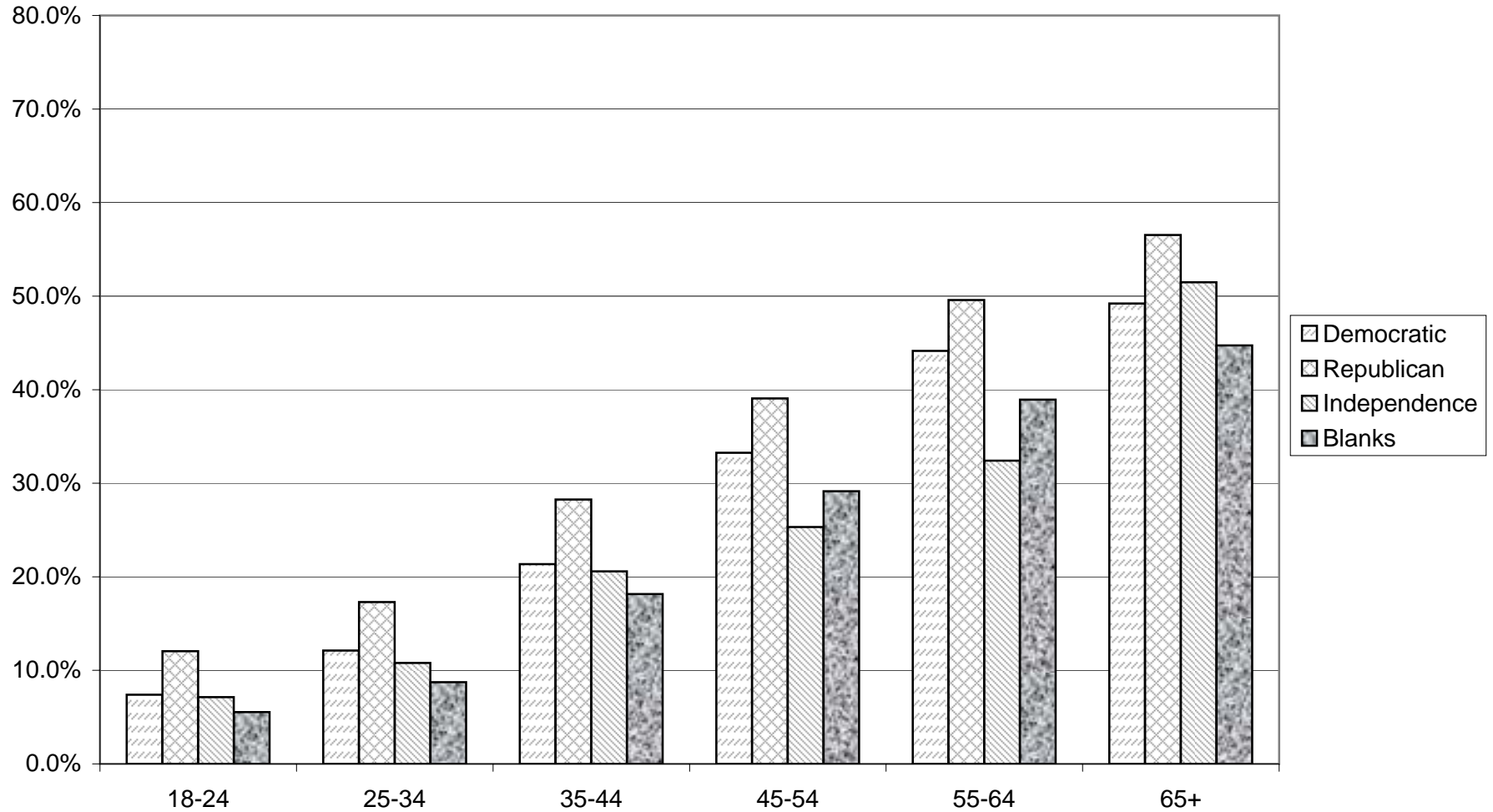
# COMPARISON OF TOTAL AND GENDER TURNOUT 2007 GENERAL ELECTION



## VOTER TURNOUT BY AGE GROUP 2007 GENERAL ELECTION



## COMPARISON OF TURNOUT BY AGE GROUP 2007 GENERAL ELECTION



# **DEMOCRATIC SUMMARY**

2007 GENERAL ELECTION  
DEMOCRATIC TURNOUT BY GENDER

LT/LD SUMMARY

LEGISLATIVE DISTRICT OR TOWN <b>CITY</b>	TOTAL VOTERS			MALES			FEMALES		
	VOTED	REGISTERED	TURNOUT	VOTED	REGISTERED	TURNOUT	VOTED	REGISTERED	TURNOUT
Leg. Dist. 06	387	1,076	35.97 %	160	392	40.82 %	227	684	33.19 %
Leg. Dist. 07	225	580	38.79 %	89	223	39.91 %	136	357	38.10 %
Leg. Dist. 21	1,596	6,952	22.96 %	668	2,729	24.48 %	928	4,223	21.97 %
Leg. Dist. 22	894	6,141	14.56 %	336	2,370	14.18 %	558	3,771	14.80 %
Leg. Dist. 23	1,889	5,506	34.31 %	850	2,368	35.90 %	1,039	3,138	33.11 %
Leg. Dist. 24	1,222	3,421	35.72 %	541	1,423	38.02 %	681	1,998	34.08 %
Leg. Dist. 25	1,357	6,194	21.91 %	552	2,489	22.18 %	805	3,705	21.73 %
Leg. Dist. 26	784	3,134	25.02 %	303	1,182	25.63 %	481	1,952	24.64 %
Leg. Dist. 27	1,911	8,559	22.33 %	729	3,220	22.64 %	1,182	5,339	22.14 %
Leg. Dist. 28	966	4,829	20.00 %	408	1,843	22.14 %	558	2,986	18.69 %
Leg. Dist. 29	1,236	6,337	19.50 %	476	2,397	19.86 %	760	3,940	19.29 %
<b>TOTAL:</b>	<b>12,467</b>	<b>52,729</b>	<b>23.64 %</b>	<b>5,112</b>	<b>20,636</b>	<b>24.77 %</b>	<b>7,355</b>	<b>32,093</b>	<b>22.92 %</b>
<b>TOWNS</b>									
Brighton	3,667	8,926	41.08 %	1,504	3,463	43.43 %	2,163	5,463	39.59 %
Chili	1,690	5,292	31.93 %	728	2,134	34.11 %	962	3,158	30.46 %
Clarkson	321	905	35.47 %	135	363	37.19 %	186	542	34.32 %
East Rochester	533	1,093	48.76 %	199	412	48.30 %	334	681	49.05 %
Gates	2,089	5,903	35.39 %	838	2,302	36.40 %	1,251	3,601	34.74 %
Greece	4,107	16,923	24.27 %	1,676	6,468	25.91 %	2,431	10,455	23.25 %
Hamlin	328	1,169	28.06 %	147	470	31.28 %	181	699	25.89 %
Henrietta	2,061	6,559	31.42 %	859	2,594	33.11 %	1,202	3,965	30.32 %
Irondequoit	4,880	11,741	41.56 %	1,967	4,336	45.36 %	2,913	7,405	39.34 %
Mendon	733	1,548	47.35 %	289	586	49.32 %	444	962	46.15 %
Ogden	989	2,911	33.97 %	402	1,143	35.17 %	587	1,768	33.20 %
Parma	828	2,238	37.00 %	339	878	38.61 %	489	1,360	35.96 %
Penfield	2,293	6,637	34.55 %	929	2,546	36.49 %	1,364	4,091	33.34 %
Perinton	2,994	8,826	33.92 %	1,229	3,300	37.24 %	1,765	5,526	31.94 %
Pittsford	2,440	5,369	45.45 %	986	2,062	47.82 %	1,454	3,307	43.97 %
Riga	200	784	25.51 %	80	299	26.76 %	120	485	24.74 %
Rush	274	631	43.42 %	112	257	43.58 %	162	374	43.32 %
Sweden	662	1,718	38.53 %	276	683	40.41 %	386	1,035	37.29 %
Webster	3,015	7,663	39.34 %	1,219	2,912	41.86 %	1,796	4,751	37.80 %
Wheatland	245	887	27.62 %	113	373	30.29 %	132	514	25.68 %
<b>TOTAL:</b>	<b>34,349</b>	<b>97,723</b>	<b>35.15 %</b>	<b>14,027</b>	<b>37,581</b>	<b>37.32 %</b>	<b>20,322</b>	<b>60,142</b>	<b>33.79 %</b>
<b>GRAND TOTAL:</b>	<b>46,816</b>	<b>150,452</b>	<b>31.12 %</b>	<b>19,139</b>	<b>58,217</b>	<b>32.88 %</b>	<b>27,677</b>	<b>92,235</b>	<b>30.01 %</b>

2007 GENERAL ELECTION  
DEMOCRATIC TURNOUT BY AGE

LT/LD SUMMARY  
Part 1 of 2

LEGISLATIVE DISTRICT OR TOWN CITY	NDOB			18-24			25-34			35-44		
	VOTED	REGISTERED	TURNOUT	VOTED	REGISTERED	TURNOUT	VOTED	REGISTERED	TURNOUT	VOTED	REGISTERED	TURNOUT
Leg. Dist. 06	8	20	40.00 %	5	68	7.35 %	27	179	15.08 %	49	186	26.34 %
Leg. Dist. 07	2	8	25.00 %	2	43	4.65 %	5	73	6.85 %	10	69	14.49 %
Leg. Dist. 21	49	112	43.75 %	36	528	6.82 %	154	1,375	11.20 %	234	1,461	16.02 %
Leg. Dist. 22	24	51	47.06 %	21	663	3.17 %	60	1,103	5.44 %	105	1,171	8.97 %
Leg. Dist. 23	41	78	52.56 %	39	412	9.47 %	215	1,348	15.95 %	242	978	24.74 %
Leg. Dist. 24	20	48	41.67 %	27	214	12.62 %	132	702	18.80 %	174	609	28.57 %
Leg. Dist. 25	27	70	38.57 %	29	591	4.91 %	104	1,041	9.99 %	144	1,144	12.59 %
Leg. Dist. 26	18	36	50.00 %	14	284	4.93 %	58	649	8.94 %	118	682	17.30 %
Leg. Dist. 27	29	78	37.18 %	43	702	6.13 %	112	1,405	7.97 %	252	1,802	13.98 %
Leg. Dist. 28	21	57	36.84 %	18	426	4.23 %	54	897	6.02 %	112	950	11.79 %
Leg. Dist. 29	37	93	39.78 %	21	557	3.77 %	69	1,054	6.55 %	129	1,205	10.71 %
<b>TOTAL:</b>	<b>276</b>	<b>651</b>	<b>42.40 %</b>	<b>255</b>	<b>4,488</b>	<b>5.68 %</b>	<b>990</b>	<b>9,826</b>	<b>10.08 %</b>	<b>1,569</b>	<b>10,257</b>	<b>15.30 %</b>
<b>TOWNS</b>												
Brighton	67	114	58.77 %	79	720	10.97 %	179	1,077	16.62 %	435	1,371	31.73 %
Chili	56	115	48.70 %	23	439	5.24 %	103	765	13.46 %	197	899	21.91 %
Clarkson	0	4	0.00 %	4	68	5.88 %	16	112	14.29 %	50	189	26.46 %
East Rochester	34	50	68.00 %	15	97	15.46 %	64	183	34.97 %	75	196	38.27 %
Gates	24	61	39.34 %	31	441	7.03 %	85	770	11.04 %	197	932	21.14 %
Greece	131	326	40.18 %	95	1,422	6.68 %	169	2,281	7.41 %	356	2,701	13.18 %
Hamlin	3	8	37.50 %	8	113	7.08 %	22	166	13.25 %	41	224	18.30 %
Henrietta	23	32	71.88 %	44	529	8.32 %	135	953	14.17 %	261	1,190	21.93 %
Irondequoit	141	277	50.90 %	104	836	12.44 %	249	1,463	17.02 %	599	1,919	31.21 %
Mendon	2	3	66.67 %	24	184	13.04 %	23	144	15.97 %	136	303	44.88 %
Ogden	29	45	64.44 %	16	230	6.96 %	53	387	13.70 %	123	532	23.12 %
Parma	8	14	57.14 %	14	200	7.00 %	34	265	12.83 %	90	402	22.39 %
Penfield	53	118	44.92 %	34	508	6.69 %	98	697	14.06 %	270	1,091	24.75 %
Perinton	14	34	41.18 %	45	780	5.77 %	155	1,079	14.37 %	400	1,520	26.32 %
Pittsford	24	44	54.55 %	39	462	8.44 %	81	482	16.80 %	317	850	37.29 %
Riga	1	7	14.29 %	6	61	9.84 %	9	108	8.33 %	21	131	16.03 %
Rush	15	18	83.33 %	6	50	12.00 %	12	73	16.44 %	39	93	41.94 %
Sweden	9	16	56.25 %	12	179	6.70 %	33	247	13.36 %	73	236	30.93 %
Webster	77	151	50.99 %	57	521	10.94 %	151	903	16.72 %	395	1,365	28.94 %
Wheatland	3	7	42.86 %	8	85	9.41 %	16	110	14.55 %	22	135	16.30 %
<b>TOTAL:</b>	<b>714</b>	<b>1,444</b>	<b>49.45 %</b>	<b>664</b>	<b>7,925</b>	<b>8.38 %</b>	<b>1,687</b>	<b>12,265</b>	<b>13.75 %</b>	<b>4,097</b>	<b>16,279</b>	<b>25.17 %</b>
<b>GRAND TOTAL:</b>	<b>990</b>	<b>2,095</b>	<b>47.26 %</b>	<b>919</b>	<b>12,413</b>	<b>7.40 %</b>	<b>2,677</b>	<b>22,091</b>	<b>12.12 %</b>	<b>5,666</b>	<b>26,536</b>	<b>21.35 %</b>

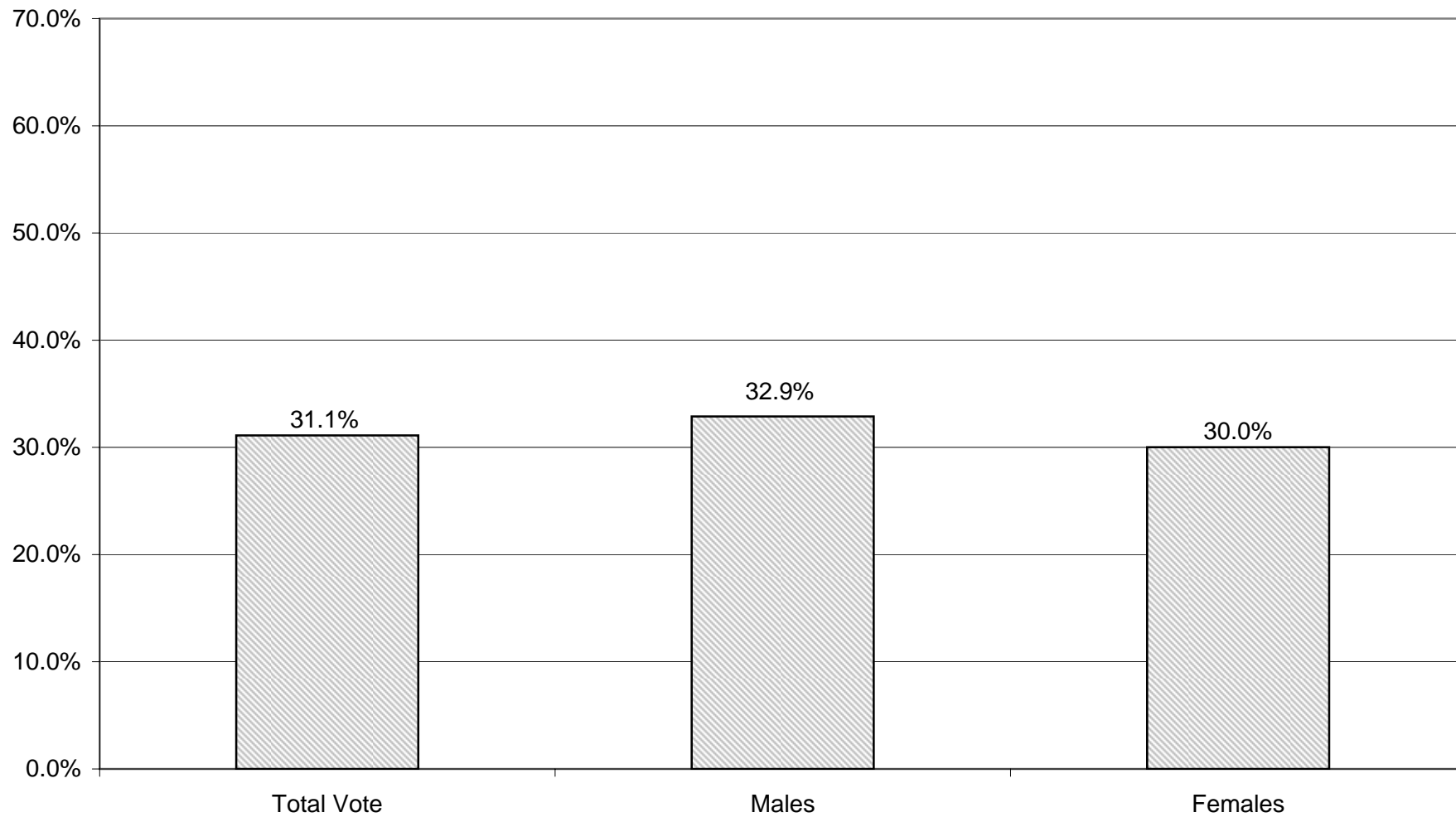


2007 GENERAL ELECTION  
DEMOCRATIC TURNOUT BY AGE

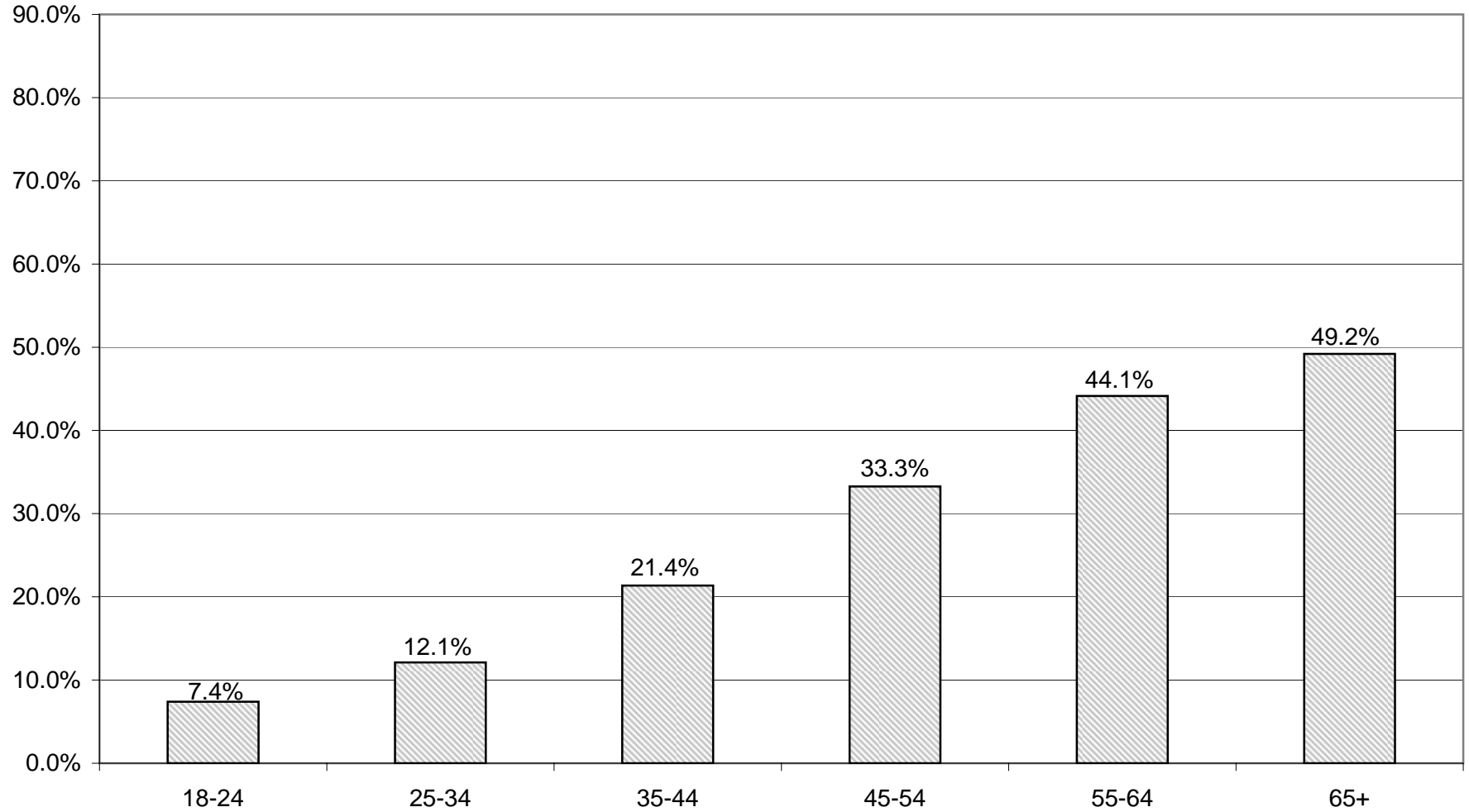
LT/LD SUMMARY  
Part 2 of 2

LEGISLATIVE DISTRICT OR TOWN CITY	45-54			55-64			65+		
	VOTED	REGISTERED	TURNOUT	VOTED	REGISTERED	TURNOUT	VOTED	REGISTERED	TURNOUT
Leg. Dist. 06	82	226	36.28 %	107	196	54.59 %	109	201	54.23 %
Leg. Dist. 07	47	110	42.73 %	82	135	60.74 %	77	142	54.23 %
Leg. Dist. 21	362	1,459	24.81 %	397	1,106	35.90 %	364	911	39.96 %
Leg. Dist. 22	205	1,308	15.67 %	250	993	25.18 %	229	852	26.88 %
Leg. Dist. 23	411	986	41.68 %	529	1,015	52.12 %	412	689	59.80 %
Leg. Dist. 24	303	733	41.34 %	323	618	52.27 %	243	497	48.89 %
Leg. Dist. 25	265	1,206	21.97 %	358	978	36.61 %	430	1,164	36.94 %
Leg. Dist. 26	190	632	30.06 %	195	456	42.76 %	191	395	48.35 %
Leg. Dist. 27	463	1,844	25.11 %	555	1,477	37.58 %	457	1,251	36.53 %
Leg. Dist. 28	260	1,065	24.41 %	219	757	28.93 %	282	677	41.65 %
Leg. Dist. 29	272	1,313	20.72 %	332	1,079	30.77 %	376	1,036	36.29 %
TOTAL:	2,860	10,882	26.28 %	3,347	8,810	37.99 %	3,170	7,815	40.56 %
<b>TOWNS</b>									
Brighton	784	1,830	42.84 %	934	1,780	52.47 %	1,189	2,034	58.46 %
Chili	355	1,091	32.54 %	423	979	43.21 %	533	1,004	53.09 %
Clarkson	63	184	34.24 %	93	176	52.84 %	95	172	55.23 %
East Rochester	117	212	55.19 %	99	165	60.00 %	129	190	67.89 %
Gates	369	1,046	35.28 %	486	1,052	46.20 %	897	1,601	56.03 %
Greece	869	3,491	24.89 %	1,093	3,188	34.28 %	1,394	3,514	39.67 %
Hamlin	87	268	32.46 %	106	219	48.40 %	61	171	35.67 %
Henrietta	426	1,295	32.90 %	502	1,197	41.94 %	670	1,363	49.16 %
Irondequoit	1,034	2,329	44.40 %	1,162	2,122	54.76 %	1,591	2,795	56.92 %
Mendon	239	419	57.04 %	180	295	61.02 %	129	200	64.50 %
Ogden	245	695	35.25 %	255	513	49.71 %	268	509	52.65 %
Parma	230	535	42.99 %	226	413	54.72 %	226	409	55.26 %
Penfield	524	1,454	36.04 %	609	1,335	45.62 %	705	1,434	49.16 %
Perinton	641	1,908	33.60 %	821	1,827	44.94 %	918	1,678	54.71 %
Pittsford	602	1,291	46.63 %	656	1,141	57.49 %	721	1,099	65.61 %
Riga	63	210	30.00 %	49	144	34.03 %	51	123	41.46 %
Rush	68	159	42.77 %	76	132	57.58 %	58	106	54.72 %
Sweden	155	380	40.79 %	207	350	59.14 %	173	310	55.81 %
Webster	670	1,557	43.03 %	739	1,470	50.27 %	926	1,696	54.60 %
Wheatland	53	197	26.90 %	63	162	38.89 %	80	191	41.88 %
TOTAL:	7,594	20,551	36.95 %	8,779	18,660	47.05 %	10,814	20,599	52.50 %
GRAND TOTAL:	10,454	31,433	33.26 %	12,126	27,470	44.14 %	13,984	28,414	49.22 %

## DEMOCRATIC TURNOUT - TOTAL AND GENDER 2007 GENERAL ELECTION



## DEMOCRATIC TURNOUT BY AGE GROUP 2007 GENERAL ELECTION



# **REPUBLICAN SUMMARY**

2007 GENERAL ELECTION  
REPUBLICAN TURNOUT BY GENDER

LT/LD SUMMARY

LEGISLATIVE DISTRICT OR TOWN <b>CITY</b>	TOTAL VOTERS			MALES			FEMALES		
	VOTED	REGISTERED	TURNOUT	VOTED	REGISTERED	TURNOUT	VOTED	REGISTERED	TURNOUT
Leg. Dist. 06	322	859	37.49 %	165	423	39.01 %	157	436	36.01 %
Leg. Dist. 07	195	459	42.48 %	104	236	44.07 %	91	223	40.81 %
Leg. Dist. 21	581	1,764	32.94 %	294	857	34.31 %	287	907	31.64 %
Leg. Dist. 22	94	585	16.07 %	41	274	14.96 %	53	311	17.04 %
Leg. Dist. 23	727	2,244	32.40 %	416	1,238	33.60 %	311	1,006	30.91 %
Leg. Dist. 24	413	1,207	34.22 %	210	602	34.88 %	203	605	33.55 %
Leg. Dist. 25	231	860	26.86 %	127	464	27.37 %	104	396	26.26 %
Leg. Dist. 26	518	1,387	37.35 %	265	678	39.09 %	253	709	35.68 %
Leg. Dist. 27	372	1,167	31.88 %	193	577	33.45 %	179	590	30.34 %
Leg. Dist. 28	383	1,385	27.65 %	208	697	29.84 %	175	688	25.44 %
Leg. Dist. 29	436	1,487	29.32 %	214	720	29.72 %	222	767	28.94 %
<b>TOTAL:</b>	<b>4,272</b>	<b>13,404</b>	<b>31.87 %</b>	<b>2,237</b>	<b>6,766</b>	<b>33.06 %</b>	<b>2,035</b>	<b>6,638</b>	<b>30.66 %</b>
<b>TOWNS</b>									
Brighton	2,505	6,121	40.92 %	1,261	2,973	42.42 %	1,244	3,148	39.52 %
Chili	3,029	7,069	42.85 %	1,571	3,553	44.22 %	1,458	3,516	41.47 %
Clarkson	715	1,606	44.52 %	379	822	46.11 %	336	784	42.86 %
East Rochester	671	1,250	53.68 %	327	592	55.24 %	344	658	52.28 %
Gates	2,837	6,146	46.16 %	1,396	3,008	46.41 %	1,441	3,138	45.92 %
Greece	7,479	23,266	32.15 %	3,889	11,523	33.75 %	3,590	11,743	30.57 %
Hamlin	1,111	2,314	48.01 %	590	1,190	49.58 %	521	1,124	46.35 %
Henrietta	3,016	7,163	42.11 %	1,586	3,662	43.31 %	1,430	3,501	40.85 %
Irondequoit	5,321	11,214	47.45 %	2,673	5,463	48.93 %	2,648	5,751	46.04 %
Mendon	1,315	2,679	49.09 %	722	1,423	50.74 %	593	1,256	47.21 %
Ogden	2,048	5,052	40.54 %	1,103	2,554	43.19 %	945	2,498	37.83 %
Parma	1,829	4,123	44.36 %	950	2,140	44.39 %	879	1,983	44.33 %
Penfield	3,690	9,263	39.84 %	1,966	4,675	42.05 %	1,724	4,588	37.58 %
Perinton	5,135	13,064	39.31 %	2,727	6,597	41.34 %	2,408	6,467	37.24 %
Pittsford	3,834	7,927	48.37 %	1,991	4,041	49.27 %	1,843	3,886	47.43 %
Riga	674	1,736	38.82 %	348	871	39.95 %	326	865	37.69 %
Rush	535	1,054	50.76 %	286	544	52.57 %	249	510	48.82 %
Sweden	1,102	2,448	45.02 %	566	1,221	46.36 %	536	1,227	43.68 %
Webster	4,425	10,196	43.40 %	2,301	5,100	45.12 %	2,124	5,096	41.68 %
Wheatland	410	1,252	32.75 %	206	602	34.22 %	204	650	31.38 %
<b>TOTAL:</b>	<b>51,681</b>	<b>124,943</b>	<b>41.36 %</b>	<b>26,838</b>	<b>62,554</b>	<b>42.90 %</b>	<b>24,843</b>	<b>62,389</b>	<b>39.82 %</b>
<b>GRAND TOTAL:</b>	<b>55,953</b>	<b>138,347</b>	<b>40.44 %</b>	<b>29,075</b>	<b>69,320</b>	<b>41.94 %</b>	<b>26,878</b>	<b>69,027</b>	<b>38.94 %</b>

2007 GENERAL ELECTION  
REPUBLICAN TURNOUT BY AGE

LT/LD SUMMARY  
Part 1 of 2

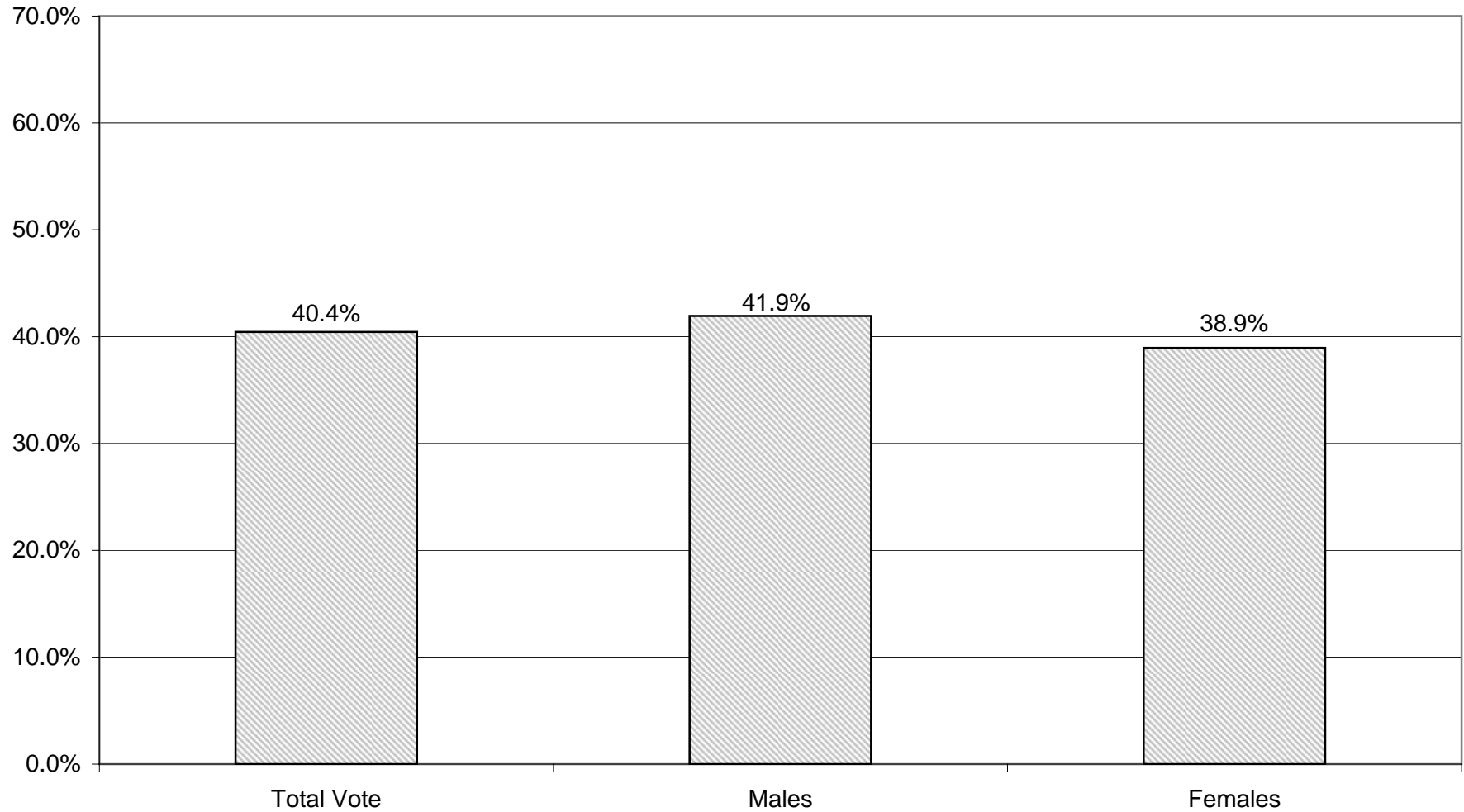
LEGISLATIVE DISTRICT OR TOWN CITY	NDOB			18-24			25-34			35-44		
	VOTED	REGISTERED	TURNOUT	VOTED	REGISTERED	TURNOUT	VOTED	REGISTERED	TURNOUT	VOTED	REGISTERED	TURNOUT
Leg. Dist. 06	16	36	44.44 %	2	34	5.88 %	22	111	19.82 %	40	148	27.03 %
Leg. Dist. 07	11	25	44.00 %	2	19	10.53 %	3	37	8.11 %	15	57	26.32 %
Leg. Dist. 21	64	148	43.24 %	9	83	10.84 %	52	278	18.71 %	70	308	22.73 %
Leg. Dist. 22	8	20	40.00 %	1	36	2.78 %	5	82	6.10 %	7	109	6.42 %
Leg. Dist. 23	62	112	55.36 %	12	111	10.81 %	76	527	14.42 %	96	423	22.70 %
Leg. Dist. 24	27	63	42.86 %	8	53	15.09 %	32	194	16.49 %	52	176	29.55 %
Leg. Dist. 25	18	39	46.15 %	3	66	4.55 %	19	151	12.58 %	20	134	14.93 %
Leg. Dist. 26	35	70	50.00 %	11	72	15.28 %	43	194	22.16 %	58	239	24.27 %
Leg. Dist. 27	29	68	42.65 %	10	79	12.66 %	28	185	15.14 %	40	183	21.86 %
Leg. Dist. 28	31	71	43.66 %	8	72	11.11 %	17	174	9.77 %	43	253	17.00 %
Leg. Dist. 29	43	94	45.74 %	4	75	5.33 %	21	169	12.43 %	42	247	17.00 %
TOTAL:	344	746	46.11 %	70	700	10.00 %	318	2,102	15.13 %	483	2,277	21.21 %
<b>TOWNS</b>												
Brighton	178	327	54.43 %	32	251	12.75 %	105	628	16.72 %	254	881	28.83 %
Chili	165	252	65.48 %	51	433	11.78 %	144	737	19.54 %	406	1,293	31.40 %
Clarkson	2	4	50.00 %	17	86	19.77 %	18	132	13.64 %	123	362	33.98 %
East Rochester	65	85	76.47 %	21	66	31.82 %	31	129	24.03 %	99	243	40.74 %
Gates	59	112	52.68 %	55	289	19.03 %	115	602	19.10 %	284	934	30.41 %
Greece	408	945	43.17 %	127	1,356	9.37 %	283	2,149	13.17 %	672	3,688	18.22 %
Hamlin	15	24	62.50 %	27	164	16.46 %	52	211	24.64 %	160	429	37.30 %
Henrietta	34	71	47.89 %	61	399	15.29 %	145	793	18.28 %	406	1,299	31.25 %
Irondequoit	316	599	52.75 %	70	540	12.96 %	222	1,001	22.18 %	585	1,690	34.62 %
Mendon	11	20	55.00 %	29	182	15.93 %	29	173	16.76 %	199	511	38.94 %
Ogden	54	103	52.43 %	35	293	11.95 %	94	530	17.74 %	273	939	29.07 %
Parma	20	54	37.04 %	46	296	15.54 %	71	370	19.19 %	239	715	33.43 %
Penfield	159	299	53.18 %	62	463	13.39 %	107	708	15.11 %	488	1,749	27.90 %
Perinton	41	98	41.84 %	53	637	8.32 %	161	985	16.35 %	675	2,454	27.51 %
Pittsford	93	151	61.59 %	30	377	7.96 %	89	453	19.65 %	438	1,301	33.67 %
Riga	9	23	39.13 %	16	117	13.68 %	23	127	18.11 %	96	330	29.09 %
Rush	48	68	70.59 %	6	50	12.00 %	16	80	20.00 %	63	152	41.45 %
Sweden	26	44	59.09 %	26	171	15.20 %	54	240	22.50 %	141	417	33.81 %
Webster	140	256	54.69 %	54	482	11.20 %	193	928	20.80 %	610	1,956	31.19 %
Wheatland	6	19	31.58 %	8	86	9.30 %	16	131	12.21 %	37	194	19.07 %
TOTAL:	1,849	3,554	52.03 %	826	6,738	12.26 %	1,968	11,107	17.72 %	6,248	21,537	29.01 %
GRAND TOTAL:	2,193	4,300	51.00 %	896	7,438	12.05 %	2,286	13,209	17.31 %	6,731	23,814	28.26 %

2007 GENERAL ELECTION  
REPUBLICAN TURNOUT BY AGE

LT/LD SUMMARY  
Part 2 of 2

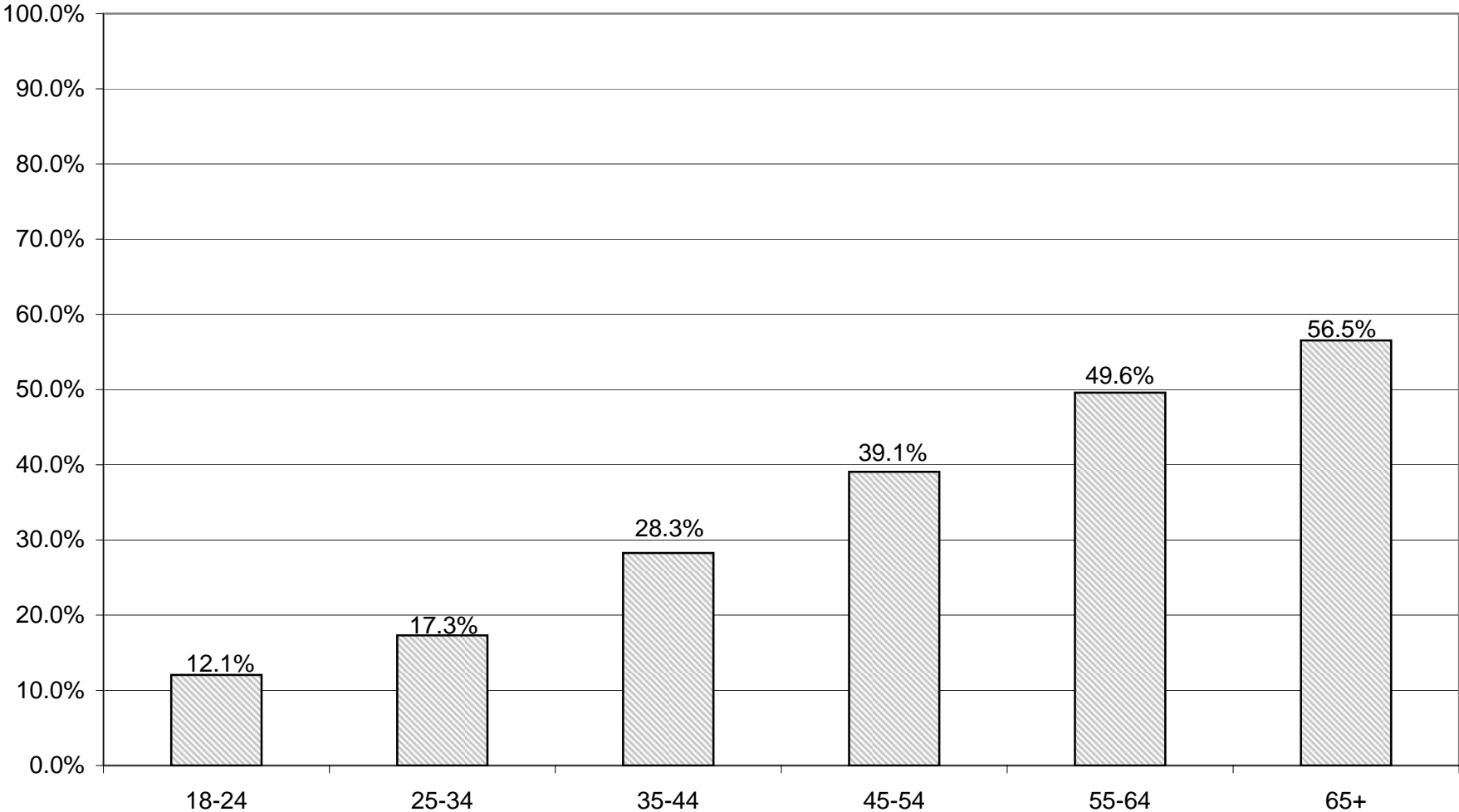
LEGISLATIVE DISTRICT OR TOWN CITY	45-54			55-64			65+		
	VOTED	REGISTERED	TURNOUT	VOTED	REGISTERED	TURNOUT	VOTED	REGISTERED	TURNOUT
Leg. Dist. 06	63	163	38.65 %	66	153	43.14 %	113	214	52.80 %
Leg. Dist. 07	35	86	40.70 %	38	83	45.78 %	91	152	59.87 %
Leg. Dist. 21	96	307	31.27 %	109	255	42.75 %	181	385	47.01 %
Leg. Dist. 22	23	131	17.56 %	23	95	24.21 %	27	112	24.11 %
Leg. Dist. 23	132	377	35.01 %	158	330	47.88 %	191	364	52.47 %
Leg. Dist. 24	69	215	32.09 %	84	174	48.28 %	141	332	42.47 %
Leg. Dist. 25	42	140	30.00 %	44	127	34.65 %	85	203	41.87 %
Leg. Dist. 26	122	319	38.24 %	109	226	48.23 %	140	267	52.43 %
Leg. Dist. 27	68	229	29.69 %	83	188	44.15 %	114	235	48.51 %
Leg. Dist. 28	98	304	32.24 %	79	220	35.91 %	107	291	36.77 %
Leg. Dist. 29	76	273	27.84 %	96	267	35.96 %	154	362	42.54 %
TOTAL:	824	2,544	32.39 %	889	2,118	41.97 %	1,344	2,917	46.07 %
<b>TOWNS</b>									
Brighton	384	1,042	36.85 %	473	985	48.02 %	1,079	2,007	53.76 %
Chili	631	1,512	41.73 %	576	1,133	50.84 %	1,056	1,709	61.79 %
Clarkson	164	379	43.27 %	177	266	66.54 %	214	377	56.76 %
East Rochester	148	259	57.14 %	121	190	63.68 %	186	278	66.91 %
Gates	483	1,165	41.46 %	578	1,037	55.74 %	1,263	2,007	62.93 %
Greece	1,384	4,770	29.01 %	1,503	3,750	40.08 %	3,102	6,608	46.94 %
Hamlin	273	588	46.43 %	295	457	64.55 %	289	441	65.53 %
Henrietta	688	1,561	44.07 %	581	1,182	49.15 %	1,101	1,858	59.26 %
Irondequoit	1,047	2,118	49.43 %	981	1,746	56.19 %	2,100	3,520	59.66 %
Mendon	372	742	50.13 %	307	499	61.52 %	368	552	66.67 %
Ogden	510	1,273	40.06 %	470	898	52.34 %	612	1,016	60.24 %
Parma	417	957	43.57 %	405	729	55.56 %	631	1,002	62.97 %
Penfield	856	2,219	38.58 %	734	1,483	49.49 %	1,284	2,342	54.82 %
Perinton	1,059	2,982	35.51 %	1,116	2,408	46.35 %	2,030	3,500	58.00 %
Pittsford	807	1,848	43.67 %	753	1,356	55.53 %	1,624	2,441	66.53 %
Riga	155	420	36.90 %	168	349	48.14 %	207	370	55.95 %
Rush	107	254	42.13 %	114	191	59.69 %	181	259	69.88 %
Sweden	256	548	46.72 %	263	478	55.02 %	336	550	61.09 %
Webster	955	2,278	41.92 %	902	1,698	53.12 %	1,571	2,598	60.47 %
Wheatland	95	270	35.19 %	92	233	39.48 %	156	319	48.90 %
TOTAL:	10,791	27,185	39.69 %	10,609	21,068	50.36 %	19,390	33,754	57.45 %
GRAND TOTAL:	11,615	29,729	39.07 %	11,498	23,186	49.59 %	20,734	36,671	56.54 %

# REPUBLICAN TURNOUT - TOTAL AND GENDER 2007 GENERAL ELECTION





# REPUBLICAN TURNOUT BY AGE GROUP 2007 GENERAL ELECTION



# **INDEPENDENCE SUMMARY**

2007 GENERAL ELECTION  
INDEPENDENCE TURNOUT BY GENDER

LT/LD SUMMARY

LEGISLATIVE DISTRICT OR TOWN	TOTAL VOTERS			MALES			FEMALES		
	VOTED	REGISTERED	TURNOUT	VOTED	REGISTERED	TURNOUT	VOTED	REGISTERED	TURNOUT
<b>CITY</b>									
Leg. Dist. 06	24	103	23.30 %	13	44	29.55 %	11	59	18.64 %
Leg. Dist. 07	9	56	16.07 %	6	28	21.43 %	3	28	10.71 %
Leg. Dist. 21	50	390	12.82 %	31	181	17.13 %	19	209	9.09 %
Leg. Dist. 22	7	137	5.11 %	2	65	3.08 %	5	72	6.94 %
Leg. Dist. 23	76	488	15.57 %	41	225	18.22 %	35	263	13.31 %
Leg. Dist. 24	46	253	18.18 %	25	130	19.23 %	21	123	17.07 %
Leg. Dist. 25	23	184	12.50 %	17	107	15.89 %	6	77	7.79 %
Leg. Dist. 26	29	208	13.94 %	15	98	15.31 %	14	110	12.73 %
Leg. Dist. 27	32	289	11.07 %	19	149	12.75 %	13	140	9.29 %
Leg. Dist. 28	32	257	12.45 %	20	124	16.13 %	12	133	9.02 %
Leg. Dist. 29	33	232	14.22 %	18	112	16.07 %	15	120	12.50 %
<b>TOTAL:</b>	<b>361</b>	<b>2,597</b>	<b>13.90 %</b>	<b>207</b>	<b>1,263</b>	<b>16.39 %</b>	<b>154</b>	<b>1,334</b>	<b>11.54 %</b>
<b>TOWNS</b>									
Brighton	147	624	23.56 %	69	281	24.56 %	78	343	22.74 %
Chili	111	541	20.52 %	56	252	22.22 %	55	289	19.03 %
Clarkson	30	152	19.74 %	20	74	27.03 %	10	78	12.82 %
East Rochester	62	146	42.47 %	36	72	50.00 %	26	74	35.14 %
Gates	118	513	23.00 %	65	250	26.00 %	53	263	20.15 %
Greece	300	1,980	15.15 %	166	923	17.98 %	134	1,057	12.68 %
Hamlin	45	199	22.61 %	25	96	26.04 %	20	103	19.42 %
Henrietta	157	685	22.92 %	79	334	23.65 %	78	351	22.22 %
Irondequoit	326	1,124	29.00 %	163	521	31.29 %	163	603	27.03 %
Mendon	69	205	33.66 %	28	84	33.33 %	41	121	33.88 %
Ogden	79	393	20.10 %	44	191	23.04 %	35	202	17.33 %
Parma	97	339	28.61 %	51	167	30.54 %	46	172	26.74 %
Penfield	187	825	22.67 %	99	390	25.38 %	88	435	20.23 %
Perinton	203	1,048	19.37 %	103	480	21.46 %	100	568	17.61 %
Pittsford	148	520	28.46 %	59	201	29.35 %	89	319	27.90 %
Riga	26	148	17.57 %	14	57	24.56 %	12	91	13.19 %
Rush	19	64	29.69 %	9	25	36.00 %	10	39	25.64 %
Sweden	70	236	29.66 %	40	115	34.78 %	30	121	24.79 %
Webster	279	991	28.15 %	146	492	29.67 %	133	499	26.65 %
Wheatland	11	111	9.91 %	6	49	12.24 %	5	62	8.06 %
<b>TOTAL:</b>	<b>2,484</b>	<b>10,844</b>	<b>22.91 %</b>	<b>1,278</b>	<b>5,054</b>	<b>25.29 %</b>	<b>1,206</b>	<b>5,790</b>	<b>20.83 %</b>
<b>GRAND TOTAL:</b>	<b>2,845</b>	<b>13,441</b>	<b>21.17 %</b>	<b>1,485</b>	<b>6,317</b>	<b>23.51 %</b>	<b>1,360</b>	<b>7,124</b>	<b>19.09 %</b>

2007 GENERAL ELECTION  
INDEPENDENCE TURNOUT BY AGE

LT/LD SUMMARY  
Part 1 of 2

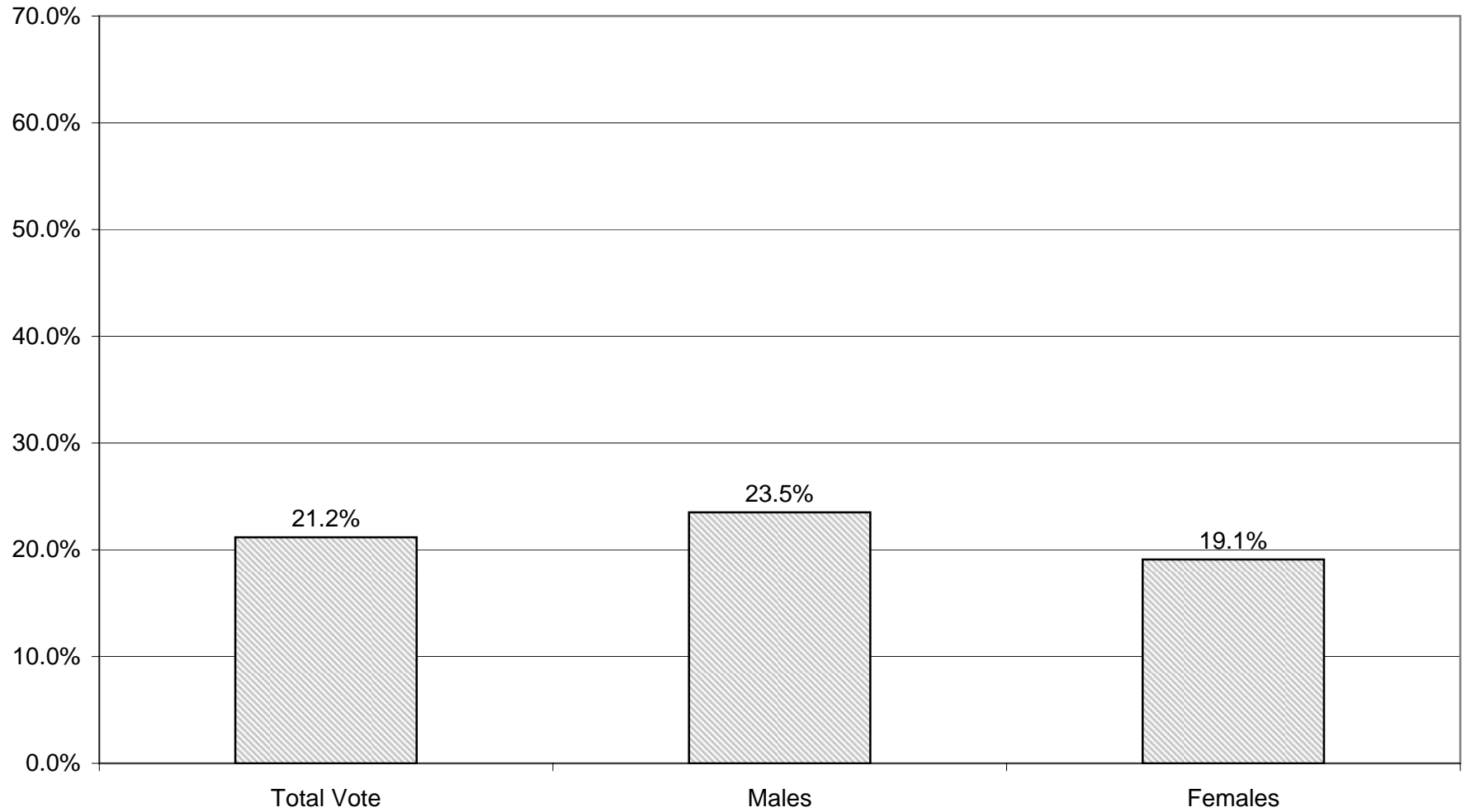
LEGISLATIVE DISTRICT OR TOWN CITY	NDOB			18-24			25-34			35-44		
	VOTED	REGISTERED	TURNOUT	VOTED	REGISTERED	TURNOUT	VOTED	REGISTERED	TURNOUT	VOTED	REGISTERED	TURNOUT
Leg. Dist. 06	0	0	0.00 %	1	9	11.11 %	4	29	13.79 %	4	21	19.05 %
Leg. Dist. 07	0	0	0.00 %	0	0	0.00 %	0	15	0.00 %	3	8	37.50 %
Leg. Dist. 21	0	0	0.00 %	1	41	2.44 %	7	120	5.83 %	13	105	12.38 %
Leg. Dist. 22	0	0	0.00 %	1	26	3.85 %	0	46	0.00 %	1	23	4.35 %
Leg. Dist. 23	0	0	0.00 %	4	56	7.14 %	19	201	9.45 %	21	103	20.39 %
Leg. Dist. 24	0	2	0.00 %	2	29	6.90 %	13	94	13.83 %	12	47	25.53 %
Leg. Dist. 25	0	0	0.00 %	0	18	0.00 %	6	49	12.24 %	6	42	14.29 %
Leg. Dist. 26	0	0	0.00 %	1	33	3.03 %	5	74	6.76 %	5	35	14.29 %
Leg. Dist. 27	0	0	0.00 %	2	28	7.14 %	5	78	6.41 %	6	81	7.41 %
Leg. Dist. 28	0	1	0.00 %	0	44	0.00 %	5	77	6.49 %	5	48	10.42 %
Leg. Dist. 29	0	0	0.00 %	2	30	6.67 %	5	64	7.81 %	7	51	13.73 %
TOTAL:	0	3	0.00 %	14	314	4.46 %	69	847	8.15 %	83	564	14.72 %
<b>TOWNS</b>												
Brighton	0	0	0.00 %	3	84	3.57 %	16	145	11.03 %	34	132	25.76 %
Chili	0	0	0.00 %	1	77	1.30 %	16	141	11.35 %	30	143	20.98 %
Clarkson	0	0	0.00 %	1	17	5.88 %	3	30	10.00 %	7	47	14.89 %
East Rochester	0	0	0.00 %	1	19	5.26 %	12	37	32.43 %	18	37	48.65 %
Gates	0	0	0.00 %	4	69	5.80 %	15	113	13.27 %	30	124	24.19 %
Greece	0	0	0.00 %	17	277	6.14 %	30	460	6.52 %	60	478	12.55 %
Hamlin	0	0	0.00 %	4	33	12.12 %	6	40	15.00 %	8	47	17.02 %
Henrietta	0	0	0.00 %	4	90	4.44 %	28	185	15.14 %	34	168	20.24 %
Irondequoit	0	0	0.00 %	21	148	14.19 %	43	291	14.78 %	79	261	30.27 %
Mendon	0	0	0.00 %	4	44	9.09 %	6	29	20.69 %	17	38	44.74 %
Ogden	0	0	0.00 %	1	63	1.59 %	11	96	11.46 %	20	97	20.62 %
Parma	0	0	0.00 %	5	43	11.63 %	7	78	8.97 %	22	80	27.50 %
Penfield	0	0	0.00 %	9	118	7.63 %	17	160	10.63 %	36	166	21.69 %
Perinton	0	0	0.00 %	4	128	3.13 %	27	222	12.16 %	38	265	14.34 %
Pittsford	0	0	0.00 %	8	71	11.27 %	10	88	11.36 %	32	131	24.43 %
Riga	0	0	0.00 %	3	28	10.71 %	2	30	6.67 %	3	35	8.57 %
Rush	0	0	0.00 %	0	11	0.00 %	2	12	16.67 %	5	14	35.71 %
Sweden	0	0	0.00 %	7	40	17.50 %	9	52	17.31 %	13	51	25.49 %
Webster	0	0	0.00 %	17	134	12.69 %	24	196	12.24 %	77	250	30.80 %
Wheatland	0	0	0.00 %	2	15	13.33 %	1	29	3.45 %	3	26	11.54 %
TOTAL:	0	0	0.00 %	116	1,509	7.69 %	285	2,434	11.71 %	566	2,590	21.85 %
GRAND TOTAL:	0	3	0.00 %	130	1,823	7.13 %	354	3,281	10.79 %	649	3,154	20.58 %

2007 GENERAL ELECTION  
INDEPENDENCE TURNOUT BY AGE

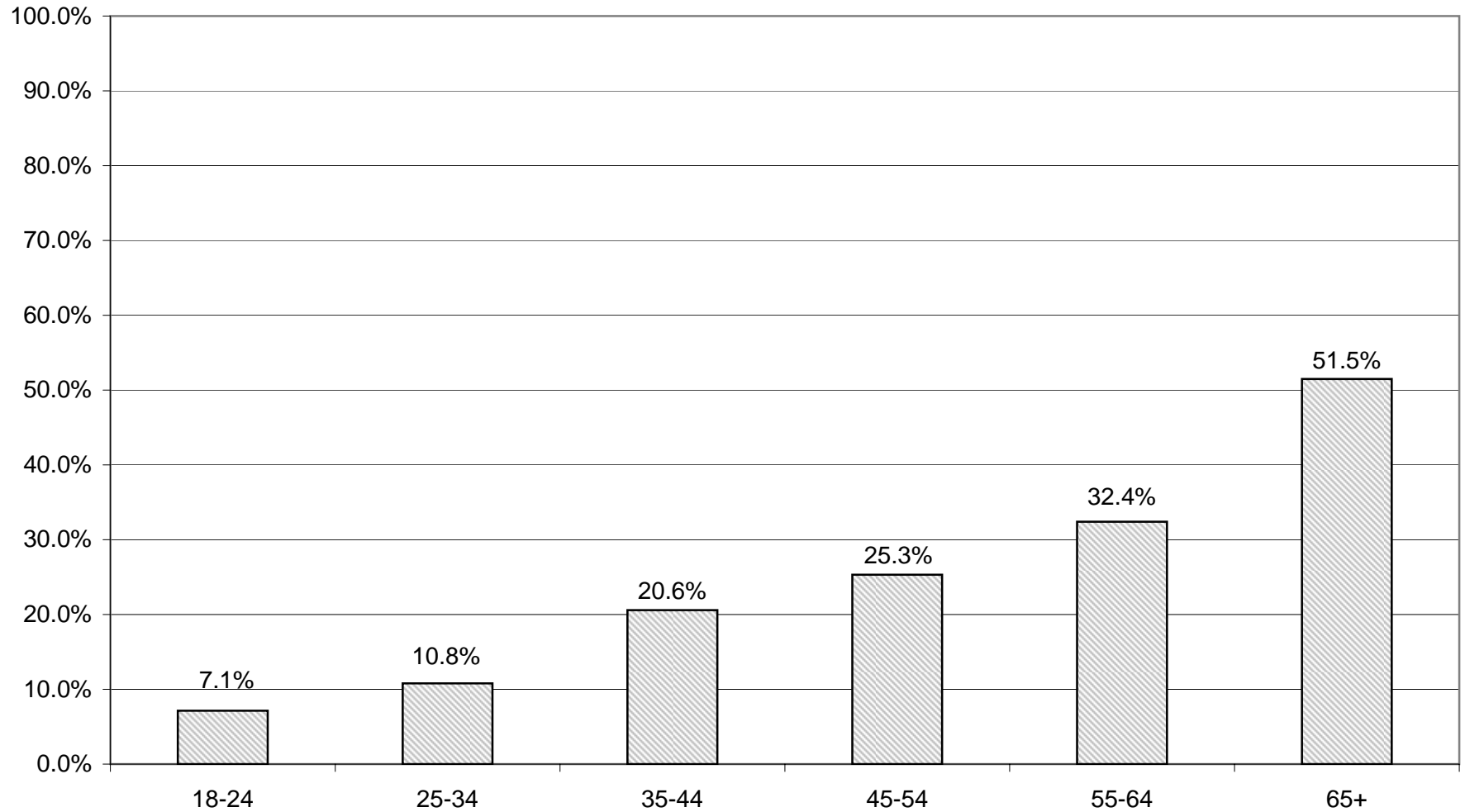
LT/LD SUMMARY  
Part 2 of 2

LEGISLATIVE DISTRICT OR TOWN	45-54			55-64			65+		
	VOTED	REGISTERED	TURNOUT	VOTED	REGISTERED	TURNOUT	VOTED	REGISTERED	TURNOUT
<b>CITY</b>									
Leg. Dist. 06	8	25	32.00 %	4	9	44.44 %	3	10	30.00 %
Leg. Dist. 07	2	15	13.33 %	2	12	16.67 %	2	6	33.33 %
Leg. Dist. 21	16	67	23.88 %	6	35	17.14 %	7	22	31.82 %
Leg. Dist. 22	2	26	7.69 %	0	10	0.00 %	3	6	50.00 %
Leg. Dist. 23	15	70	21.43 %	10	40	25.00 %	7	18	38.89 %
Leg. Dist. 24	8	46	17.39 %	7	20	35.00 %	4	15	26.67 %
Leg. Dist. 25	5	43	11.63 %	4	22	18.18 %	2	10	20.00 %
Leg. Dist. 26	9	41	21.95 %	8	22	36.36 %	1	3	33.33 %
Leg. Dist. 27	10	56	17.86 %	7	37	18.92 %	2	9	22.22 %
Leg. Dist. 28	8	50	16.00 %	8	28	28.57 %	6	9	66.67 %
Leg. Dist. 29	7	37	18.92 %	8	31	25.81 %	4	19	21.05 %
<b>TOTAL:</b>	<b>90</b>	<b>476</b>	<b>18.91 %</b>	<b>64</b>	<b>266</b>	<b>24.06 %</b>	<b>41</b>	<b>127</b>	<b>32.28 %</b>
<b>TOWNS</b>									
Brighton	37	117	31.62 %	25	72	34.72 %	32	74	43.24 %
Chili	21	84	25.00 %	19	55	34.55 %	24	41	58.54 %
Clarkson	10	39	25.64 %	5	9	55.56 %	4	10	40.00 %
East Rochester	12	25	48.00 %	12	19	63.16 %	7	9	77.78 %
Gates	22	92	23.91 %	17	51	33.33 %	30	64	46.88 %
Greece	69	382	18.06 %	52	203	25.62 %	72	180	40.00 %
Hamlin	9	43	20.93 %	13	28	46.43 %	5	8	62.50 %
Henrietta	34	119	28.57 %	29	73	39.73 %	28	50	56.00 %
Irondequoit	83	220	37.73 %	43	113	38.05 %	57	91	62.64 %
Mendon	22	59	37.29 %	9	21	42.86 %	11	14	78.57 %
Ogden	20	81	24.69 %	10	32	31.25 %	17	24	70.83 %
Parma	22	70	31.43 %	19	42	45.24 %	22	26	84.62 %
Penfield	51	194	26.29 %	27	85	31.76 %	47	102	46.08 %
Perinton	46	197	23.35 %	29	120	24.17 %	59	116	50.86 %
Pittsford	37	107	34.58 %	21	59	35.59 %	40	64	62.50 %
Riga	5	29	17.24 %	4	13	30.77 %	9	13	69.23 %
Rush	4	13	30.77 %	5	12	41.67 %	2	2	100.00 %
Sweden	18	47	38.30 %	9	24	37.50 %	14	22	63.64 %
Webster	52	205	25.37 %	42	102	41.18 %	67	104	64.42 %
Wheatland	0	23	0.00 %	3	11	27.27 %	2	7	28.57 %
<b>TOTAL:</b>	<b>574</b>	<b>2,146</b>	<b>26.75 %</b>	<b>393</b>	<b>1,144</b>	<b>34.35 %</b>	<b>550</b>	<b>1,021</b>	<b>53.87 %</b>
<b>GRAND TOTAL:</b>	<b>664</b>	<b>2,622</b>	<b>25.32 %</b>	<b>457</b>	<b>1,410</b>	<b>32.41 %</b>	<b>591</b>	<b>1,148</b>	<b>51.48 %</b>

# INDEPENDENCE TURNOUT - TOTAL AND GENDER 2007 GENERAL ELECTION



# INDEPENDENCE TURNOUT BY AGE GROUP 2007 GENERAL ELECTION



# **CONSERVATIVE SUMMARY**



2007 GENERAL ELECTION  
CONSERVATIVE TURNOUT BY GENDER

LT/LD SUMMARY

LEGISLATIVE DISTRICT OR TOWN	TOTAL VOTERS			MALES			FEMALES		
	VOTED	REGISTERED	TURNOUT	VOTED	REGISTERED	TURNOUT	VOTED	REGISTERED	TURNOUT
<b>CITY</b>									
Leg. Dist. 06	37	85	43.53 %	19	46	41.30 %	18	39	46.15 %
Leg. Dist. 07	10	25	40.00 %	7	17	41.18 %	3	8	37.50 %
Leg. Dist. 21	33	93	35.48 %	22	60	36.67 %	11	33	33.33 %
Leg. Dist. 22	9	48	18.75 %	8	31	25.81 %	1	17	5.88 %
Leg. Dist. 23	34	98	34.69 %	23	55	41.82 %	11	43	25.58 %
Leg. Dist. 24	16	59	27.12 %	12	32	37.50 %	4	27	14.81 %
Leg. Dist. 25	14	49	28.57 %	10	31	32.26 %	4	18	22.22 %
Leg. Dist. 26	41	115	35.65 %	26	66	39.39 %	15	49	30.61 %
Leg. Dist. 27	16	74	21.62 %	10	46	21.74 %	6	28	21.43 %
Leg. Dist. 28	40	124	32.26 %	22	66	33.33 %	18	58	31.03 %
Leg. Dist. 29	28	104	26.92 %	16	62	25.81 %	12	42	28.57 %
<b>TOTAL:</b>	<b>278</b>	<b>874</b>	<b>31.81 %</b>	<b>175</b>	<b>512</b>	<b>34.18 %</b>	<b>103</b>	<b>362</b>	<b>28.45 %</b>
<b>TOWNS</b>									
Brighton	76	198	38.38 %	50	118	42.37 %	26	80	32.50 %
Chili	169	434	38.94 %	103	247	41.70 %	66	187	35.29 %
Clarkson	37	111	33.33 %	26	67	38.81 %	11	44	25.00 %
East Rochester	44	93	47.31 %	28	51	54.90 %	16	42	38.10 %
Gates	172	387	44.44 %	106	212	50.00 %	66	175	37.71 %
Greece	452	1,517	29.80 %	256	802	31.92 %	196	715	27.41 %
Hamlin	36	130	27.69 %	26	74	35.14 %	10	56	17.86 %
Henrietta	163	460	35.43 %	91	248	36.69 %	72	212	33.96 %
Irondequoit	313	655	47.79 %	195	368	52.99 %	118	287	41.11 %
Mendon	42	90	46.67 %	25	54	46.30 %	17	36	47.22 %
Ogden	143	353	40.51 %	90	180	50.00 %	53	173	30.64 %
Parma	104	260	40.00 %	65	146	44.52 %	39	114	34.21 %
Penfield	166	393	42.24 %	102	232	43.97 %	64	161	39.75 %
Perinton	165	450	36.67 %	104	276	37.68 %	61	174	35.06 %
Pittsford	92	190	48.42 %	59	121	48.76 %	33	69	47.83 %
Riga	31	80	38.75 %	20	50	40.00 %	11	30	36.67 %
Rush	22	43	51.16 %	14	23	60.87 %	8	20	40.00 %
Sweden	52	123	42.28 %	31	70	44.29 %	21	53	39.62 %
Webster	214	515	41.55 %	129	295	43.73 %	85	220	38.64 %
Wheatland	24	75	32.00 %	15	49	30.61 %	9	26	34.62 %
<b>TOTAL:</b>	<b>2,517</b>	<b>6,557</b>	<b>38.39 %</b>	<b>1,535</b>	<b>3,683</b>	<b>41.68 %</b>	<b>982</b>	<b>2,874</b>	<b>34.17 %</b>
<b>GRAND TOTAL:</b>	<b>2,795</b>	<b>7,431</b>	<b>37.61 %</b>	<b>1,710</b>	<b>4,195</b>	<b>40.76 %</b>	<b>1,085</b>	<b>3,236</b>	<b>33.53 %</b>

2007 GENERAL ELECTION  
CONSERVATIVE TURNOUT BY AGE

LT/LD SUMMARY  
Part 1 of 2

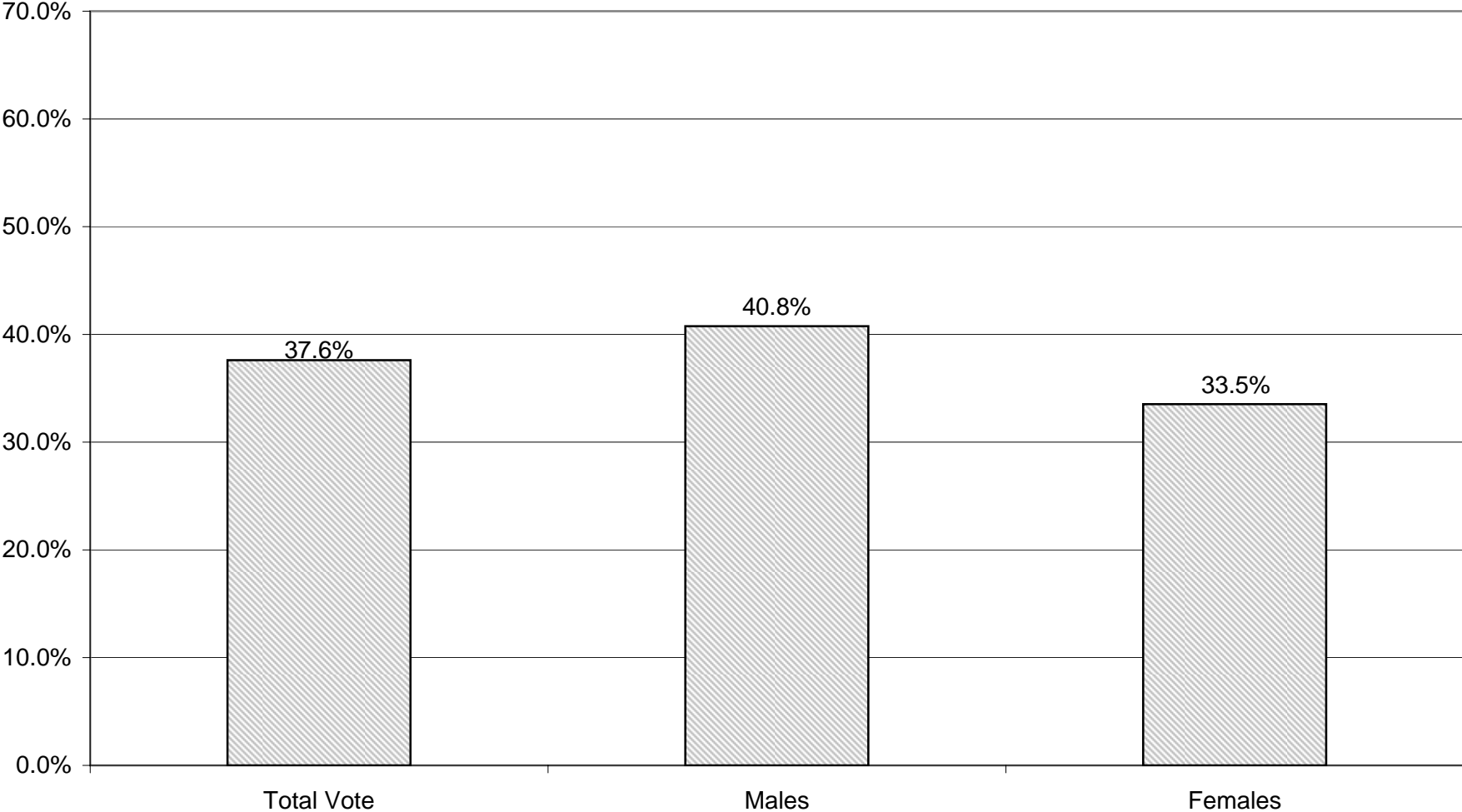
LEGISLATIVE DISTRICT OR TOWN CITY	NDOB			18-24			25-34			35-44		
	VOTED	REGISTERED	TURNOUT	VOTED	REGISTERED	TURNOUT	VOTED	REGISTERED	TURNOUT	VOTED	REGISTERED	TURNOUT
Leg. Dist. 06	0	0	0.00 %	0	1	0.00 %	2	9	22.22 %	7	23	30.43 %
Leg. Dist. 07	0	0	0.00 %	0	1	0.00 %	0	0	0.00 %	0	5	0.00 %
Leg. Dist. 21	2	3	66.67 %	1	3	33.33 %	1	10	10.00 %	3	17	17.65 %
Leg. Dist. 22	0	0	0.00 %	0	1	0.00 %	0	8	0.00 %	1	11	9.09 %
Leg. Dist. 23	1	1	100.00 %	0	2	0.00 %	2	17	11.76 %	5	18	27.78 %
Leg. Dist. 24	2	2	100.00 %	0	0	0.00 %	2	10	20.00 %	0	13	0.00 %
Leg. Dist. 25	1	2	50.00 %	1	1	100.00 %	1	9	11.11 %	0	5	0.00 %
Leg. Dist. 26	0	1	0.00 %	2	8	25.00 %	3	14	21.43 %	5	16	31.25 %
Leg. Dist. 27	1	1	100.00 %	0	6	0.00 %	0	13	0.00 %	3	11	27.27 %
Leg. Dist. 28	0	0	0.00 %	1	3	33.33 %	0	10	0.00 %	3	17	17.65 %
Leg. Dist. 29	0	0	0.00 %	0	4	0.00 %	1	17	5.88 %	3	20	15.00 %
TOTAL:	7	10	70.00 %	5	30	16.67 %	12	117	10.26 %	30	156	19.23 %
<b>TOWNS</b>												
Brighton	2	5	40.00 %	0	14	0.00 %	2	13	15.38 %	13	33	39.39 %
Chili	2	2	100.00 %	3	23	13.04 %	7	47	14.89 %	22	75	29.33 %
Clarkson	0	0	0.00 %	0	5	0.00 %	0	11	0.00 %	8	34	23.53 %
East Rochester	0	1	0.00 %	1	7	14.29 %	7	14	50.00 %	10	21	47.62 %
Gates	1	2	50.00 %	4	18	22.22 %	8	29	27.59 %	24	86	27.91 %
Greece	7	15	46.67 %	13	79	16.46 %	20	155	12.90 %	50	245	20.41 %
Hamlin	0	0	0.00 %	0	4	0.00 %	0	13	0.00 %	6	28	21.43 %
Henrietta	2	3	66.67 %	0	19	0.00 %	9	33	27.27 %	18	87	20.69 %
Irondequoit	6	8	75.00 %	6	21	28.57 %	15	66	22.73 %	51	113	45.13 %
Mendon	0	0	0.00 %	1	5	20.00 %	2	5	40.00 %	7	17	41.18 %
Ogden	2	2	100.00 %	4	23	17.39 %	5	28	17.86 %	19	71	26.76 %
Parma	0	0	0.00 %	3	11	27.27 %	3	23	13.04 %	14	55	25.45 %
Penfield	1	3	33.33 %	2	20	10.00 %	10	28	35.71 %	22	64	34.38 %
Perinton	0	0	0.00 %	2	16	12.50 %	4	35	11.43 %	10	58	17.24 %
Pittsford	2	3	66.67 %	0	4	0.00 %	1	7	14.29 %	12	38	31.58 %
Riga	0	0	0.00 %	0	3	0.00 %	1	10	10.00 %	6	17	35.29 %
Rush	0	0	0.00 %	0	0	0.00 %	1	2	50.00 %	3	8	37.50 %
Sweden	0	0	0.00 %	1	6	16.67 %	2	14	14.29 %	7	26	26.92 %
Webster	2	4	50.00 %	5	23	21.74 %	11	49	22.45 %	19	86	22.09 %
Wheatland	0	0	0.00 %	0	2	0.00 %	1	5	20.00 %	2	19	10.53 %
TOTAL:	27	48	56.25 %	45	303	14.85 %	109	587	18.57 %	323	1,181	27.35 %
GRAND TOTAL:	34	58	58.62 %	50	333	15.02 %	121	704	17.19 %	353	1,337	26.40 %

2007 GENERAL ELECTION  
CONSERVATIVE TURNOUT BY AGE

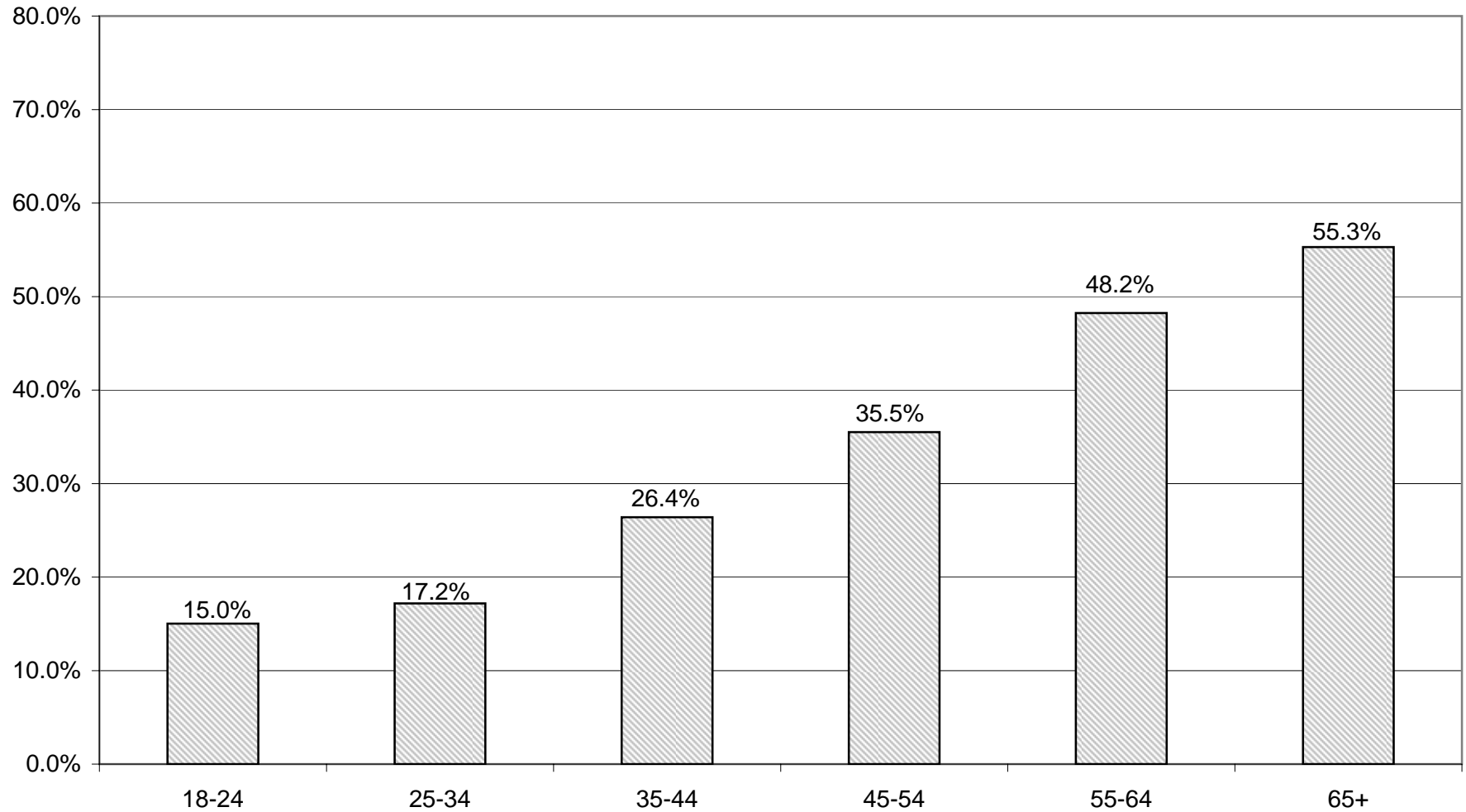
LT/LD SUMMARY  
Part 2 of 2

LEGISLATIVE DISTRICT OR TOWN CITY	45-54			55-64			65+		
	VOTED	REGISTERED	TURNOUT	VOTED	REGISTERED	TURNOUT	VOTED	REGISTERED	TURNOUT
Leg. Dist. 06	8	18	44.44 %	13	22	59.09 %	7	12	58.33 %
Leg. Dist. 07	1	4	25.00 %	9	14	64.29 %	0	1	0.00 %
Leg. Dist. 21	9	29	31.03 %	11	24	45.83 %	6	7	85.71 %
Leg. Dist. 22	5	13	38.46 %	2	8	25.00 %	1	7	14.29 %
Leg. Dist. 23	4	21	19.05 %	10	25	40.00 %	12	14	85.71 %
Leg. Dist. 24	6	13	46.15 %	4	12	33.33 %	2	9	22.22 %
Leg. Dist. 25	5	16	31.25 %	2	7	28.57 %	4	9	44.44 %
Leg. Dist. 26	11	40	27.50 %	12	23	52.17 %	8	13	61.54 %
Leg. Dist. 27	3	16	18.75 %	6	18	33.33 %	3	9	33.33 %
Leg. Dist. 28	15	40	37.50 %	8	33	24.24 %	13	21	61.90 %
Leg. Dist. 29	12	26	46.15 %	8	24	33.33 %	4	13	30.77 %
TOTAL:	79	236	33.47 %	85	210	40.48 %	60	115	52.17 %
<b>TOWNS</b>									
Brighton	17	43	39.53 %	19	46	41.30 %	23	44	52.27 %
Chili	45	113	39.82 %	45	87	51.72 %	45	87	51.72 %
Clarkson	15	38	39.47 %	8	14	57.14 %	6	9	66.67 %
East Rochester	12	24	50.00 %	10	20	50.00 %	4	6	66.67 %
Gates	47	100	47.00 %	50	91	54.95 %	38	61	62.30 %
Greece	110	449	24.50 %	130	332	39.16 %	122	242	50.41 %
Hamlin	10	44	22.73 %	13	29	44.83 %	7	12	58.33 %
Henrietta	40	126	31.75 %	45	103	43.69 %	49	89	55.06 %
Irondequoit	70	164	42.68 %	91	154	59.09 %	74	129	57.36 %
Mendon	12	29	41.38 %	9	16	56.25 %	11	18	61.11 %
Ogden	43	116	37.07 %	34	64	53.13 %	36	49	73.47 %
Parma	31	78	39.74 %	31	59	52.54 %	22	34	64.71 %
Penfield	45	106	42.45 %	47	106	44.34 %	39	66	59.09 %
Perinton	34	104	32.69 %	56	115	48.70 %	59	122	48.36 %
Pittsford	20	36	55.56 %	27	54	50.00 %	30	48	62.50 %
Riga	10	21	47.62 %	7	16	43.75 %	7	13	53.85 %
Rush	4	12	33.33 %	9	11	81.82 %	5	10	50.00 %
Sweden	17	44	38.64 %	18	24	75.00 %	7	9	77.78 %
Webster	61	156	39.10 %	67	114	58.77 %	49	83	59.04 %
Wheatland	11	26	42.31 %	9	14	64.29 %	1	9	11.11 %
TOTAL:	654	1,829	35.76 %	725	1,469	49.35 %	634	1,140	55.61 %
GRAND TOTAL:	733	2,065	35.50 %	810	1,679	48.24 %	694	1,255	55.30 %

# CONSERVATIVE TURNOUT - TOTAL AND GENDER 2007 GENERAL ELECTION



## CONSERVATIVE TURNOUT BY AGE GROUP 2007 GENERAL ELECTION



# **WORKING FAMILIES SUMMARY**

2007 GENERAL ELECTION  
WORKING FAMILIES TURNOUT BY GENDER

LT/LD SUMMARY

LEGISLATIVE DISTRICT OR TOWN <b>CITY</b>	TOTAL VOTERS			MALES			FEMALES		
	VOTED	REGISTERED	TURNOUT	VOTED	REGISTERED	TURNOUT	VOTED	REGISTERED	TURNOUT
Leg. Dist. 06	0	12	0.00 %	0	5	0.00 %	0	7	0.00 %
Leg. Dist. 07	1	6	16.67 %	0	2	0.00 %	1	4	25.00 %
Leg. Dist. 21	1	50	2.00 %	0	20	0.00 %	1	30	3.33 %
Leg. Dist. 22	1	62	1.61 %	1	25	4.00 %	0	37	0.00 %
Leg. Dist. 23	7	35	20.00 %	6	19	31.58 %	1	16	6.25 %
Leg. Dist. 24	6	26	23.08 %	3	11	27.27 %	3	15	20.00 %
Leg. Dist. 25	1	40	2.50 %	0	17	0.00 %	1	23	4.35 %
Leg. Dist. 26	5	33	15.15 %	1	10	10.00 %	4	23	17.39 %
Leg. Dist. 27	5	67	7.46 %	0	19	0.00 %	5	48	10.42 %
Leg. Dist. 28	9	80	11.25 %	4	31	12.90 %	5	49	10.20 %
Leg. Dist. 29	3	54	5.56 %	1	20	5.00 %	2	34	5.88 %
<b>TOTAL:</b>	<b>39</b>	<b>465</b>	<b>8.39 %</b>	<b>16</b>	<b>179</b>	<b>8.94 %</b>	<b>23</b>	<b>286</b>	<b>8.04 %</b>
<b>TOWNS</b>									
Brighton	3	28	10.71 %	1	14	7.14 %	2	14	14.29 %
Chili	7	36	19.44 %	4	15	26.67 %	3	21	14.29 %
Clarkson	1	11	9.09 %	1	5	20.00 %	0	6	0.00 %
East Rochester	5	16	31.25 %	2	6	33.33 %	3	10	30.00 %
Gates	11	50	22.00 %	8	22	36.36 %	3	28	10.71 %
Greece	15	137	10.95 %	8	49	16.33 %	7	88	7.95 %
Hamlin	1	5	20.00 %	0	1	0.00 %	1	4	25.00 %
Henrietta	4	31	12.90 %	2	15	13.33 %	2	16	12.50 %
Irondequoit	11	51	21.57 %	3	24	12.50 %	8	27	29.63 %
Mendon	0	4	0.00 %	0	3	0.00 %	0	1	0.00 %
Ogden	9	22	40.91 %	4	12	33.33 %	5	10	50.00 %
Parma	11	35	31.43 %	8	23	34.78 %	3	12	25.00 %
Penfield	3	29	10.34 %	1	12	8.33 %	2	17	11.76 %
Perinton	1	27	3.70 %	0	11	0.00 %	1	16	6.25 %
Pittsford	5	15	33.33 %	1	6	16.67 %	4	9	44.44 %
Riga	1	6	16.67 %	0	3	0.00 %	1	3	33.33 %
Rush	0	6	0.00 %	0	6	0.00 %	0	0	0.00 %
Sweden	0	15	0.00 %	0	6	0.00 %	0	9	0.00 %
Webster	8	40	20.00 %	8	23	34.78 %	0	17	0.00 %
Wheatland	1	5	20.00 %	1	3	33.33 %	0	2	0.00 %
<b>TOTAL:</b>	<b>97</b>	<b>569</b>	<b>17.05 %</b>	<b>52</b>	<b>259</b>	<b>20.08 %</b>	<b>45</b>	<b>310</b>	<b>14.52 %</b>
<b>GRAND TOTAL:</b>	<b>136</b>	<b>1,034</b>	<b>13.15 %</b>	<b>68</b>	<b>438</b>	<b>15.53 %</b>	<b>68</b>	<b>596</b>	<b>11.41 %</b>

2007 GENERAL ELECTION  
WORKING FAMILIES TURNOUT BY AGE

LT/LD SUMMARY  
Part 1 of 2

LEGISLATIVE DISTRICT OR TOWN CITY	NDOB			18-24			25-34			35-44		
	VOTED	REGISTERED	TURNOUT	VOTED	REGISTERED	TURNOUT	VOTED	REGISTERED	TURNOUT	VOTED	REGISTERED	TURNOUT
Leg. Dist. 06	0	0	0.00 %	0	0	0.00 %	0	6	0.00 %	0	1	0.00 %
Leg. Dist. 07	0	0	0.00 %	0	1	0.00 %	0	1	0.00 %	0	3	0.00 %
Leg. Dist. 21	0	0	0.00 %	0	12	0.00 %	0	14	0.00 %	0	15	0.00 %
Leg. Dist. 22	0	0	0.00 %	0	17	0.00 %	0	21	0.00 %	0	11	0.00 %
Leg. Dist. 23	0	0	0.00 %	1	1	100.00 %	0	8	0.00 %	2	13	15.38 %
Leg. Dist. 24	0	0	0.00 %	0	3	0.00 %	2	7	28.57 %	2	8	25.00 %
Leg. Dist. 25	0	0	0.00 %	0	12	0.00 %	1	12	8.33 %	0	10	0.00 %
Leg. Dist. 26	0	0	0.00 %	0	1	0.00 %	2	8	25.00 %	0	17	0.00 %
Leg. Dist. 27	0	0	0.00 %	0	11	0.00 %	1	19	5.26 %	0	22	0.00 %
Leg. Dist. 28	0	0	0.00 %	0	6	0.00 %	2	31	6.45 %	5	26	19.23 %
Leg. Dist. 29	0	0	0.00 %	1	6	16.67 %	0	17	0.00 %	1	24	4.17 %
TOTAL:	0	0	0.00 %	2	70	2.86 %	8	144	5.56 %	10	150	6.67 %
<b>TOWNS</b>												
Brighton	0	0	0.00 %	0	1	0.00 %	0	12	0.00 %	1	8	12.50 %
Chili	0	0	0.00 %	0	2	0.00 %	0	5	0.00 %	0	7	0.00 %
Clarkson	0	0	0.00 %	0	2	0.00 %	0	3	0.00 %	0	1	0.00 %
East Rochester	0	0	0.00 %	0	2	0.00 %	2	4	50.00 %	1	5	20.00 %
Gates	0	0	0.00 %	0	4	0.00 %	1	14	7.14 %	1	15	6.67 %
Greece	0	0	0.00 %	0	15	0.00 %	2	29	6.90 %	4	52	7.69 %
Hamlin	0	0	0.00 %	0	1	0.00 %	0	1	0.00 %	1	2	50.00 %
Henrietta	0	0	0.00 %	0	1	0.00 %	0	3	0.00 %	0	8	0.00 %
Irondequoit	0	0	0.00 %	1	8	12.50 %	3	9	33.33 %	2	16	12.50 %
Mendon	0	0	0.00 %	0	1	0.00 %	0	1	0.00 %	0	1	0.00 %
Ogden	0	0	0.00 %	0	2	0.00 %	3	7	42.86 %	3	7	42.86 %
Parma	0	0	0.00 %	1	4	25.00 %	1	10	10.00 %	3	7	42.86 %
Penfield	0	0	0.00 %	1	4	25.00 %	0	5	0.00 %	1	6	16.67 %
Perinton	0	0	0.00 %	0	4	0.00 %	0	7	0.00 %	1	8	12.50 %
Pittsford	0	0	0.00 %	0	4	0.00 %	0	1	0.00 %	3	3	100.00 %
Riga	0	0	0.00 %	0	0	0.00 %	1	4	25.00 %	0	1	0.00 %
Rush	0	0	0.00 %	0	1	0.00 %	0	1	0.00 %	0	1	0.00 %
Sweden	0	0	0.00 %	0	2	0.00 %	0	3	0.00 %	0	5	0.00 %
Webster	0	0	0.00 %	0	4	0.00 %	1	9	11.11 %	5	12	41.67 %
Wheatland	0	0	0.00 %	0	1	0.00 %	0	1	0.00 %	0	1	0.00 %
TOTAL:	0	0	0.00 %	3	63	4.76 %	14	129	10.85 %	26	166	15.66 %
GRAND TOTAL:	0	0	0.00 %	5	133	3.76 %	22	273	8.06 %	36	316	11.39 %



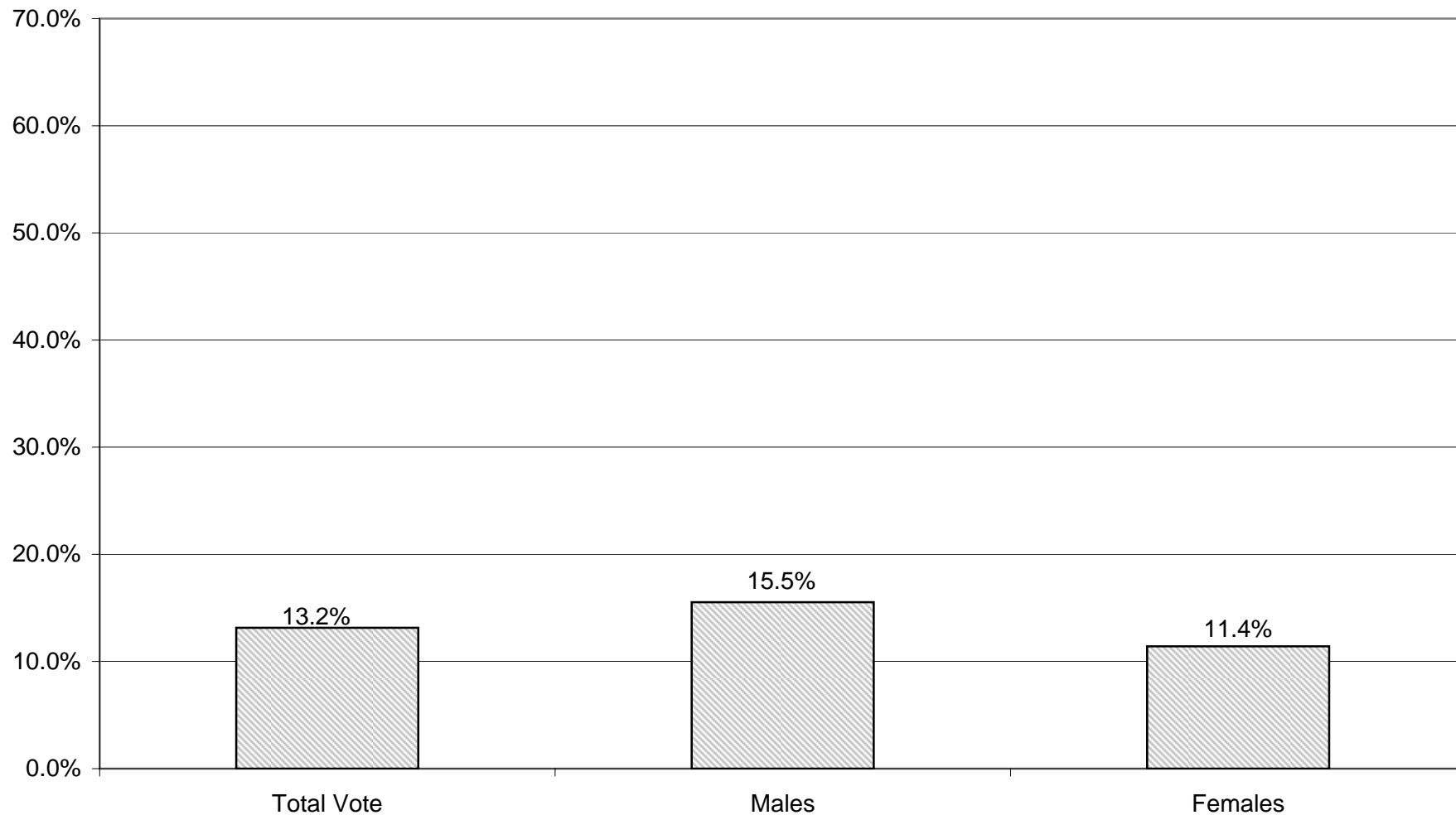
2007 GENERAL ELECTION  
WORKING FAMILIES TURNOUT BY AGE

LT/LD SUMMARY

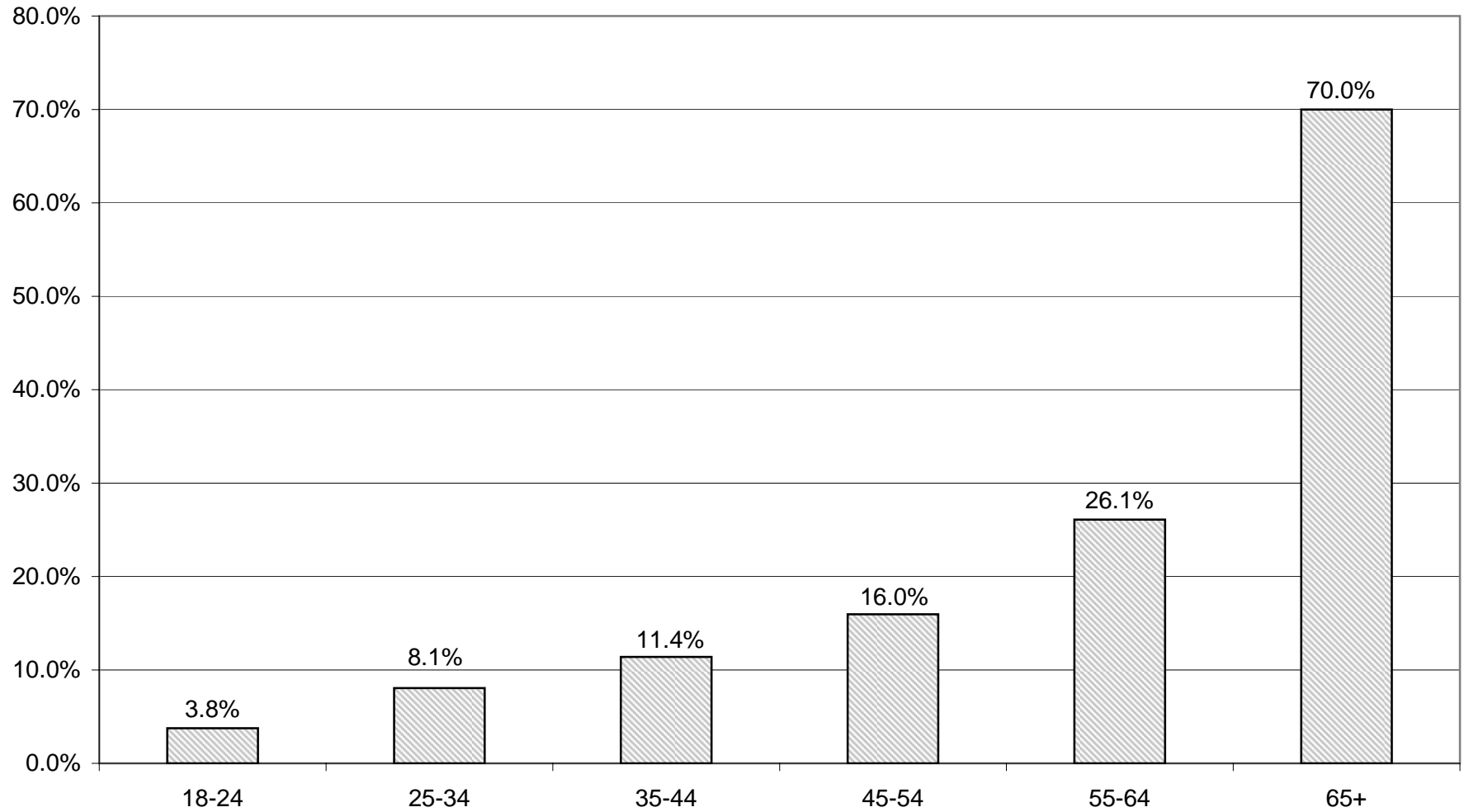
Part 2 of 2

LEGISLATIVE DISTRICT OR TOWN	45-54			55-64			65+		
	VOTED	REGISTERED	TURNOUT	VOTED	REGISTERED	TURNOUT	VOTED	REGISTERED	TURNOUT
<b>CITY</b>									
Leg. Dist. 06	0	5	0.00 %	0	0	0.00 %	0	0	0.00 %
Leg. Dist. 07	1	1	100.00 %	0	0	0.00 %	0	0	0.00 %
Leg. Dist. 21	1	8	12.50 %	0	1	0.00 %	0	0	0.00 %
Leg. Dist. 22	0	11	0.00 %	1	2	50.00 %	0	0	0.00 %
Leg. Dist. 23	1	9	11.11 %	0	1	0.00 %	3	3	100.00 %
Leg. Dist. 24	0	2	0.00 %	1	5	20.00 %	1	1	100.00 %
Leg. Dist. 25	0	4	0.00 %	0	2	0.00 %	0	0	0.00 %
Leg. Dist. 26	0	3	0.00 %	1	2	50.00 %	2	2	100.00 %
Leg. Dist. 27	1	10	10.00 %	1	3	33.33 %	2	2	100.00 %
Leg. Dist. 28	1	13	7.69 %	0	2	0.00 %	1	2	50.00 %
Leg. Dist. 29	1	6	16.67 %	0	1	0.00 %	0	0	0.00 %
TOTAL:	6	72	8.33 %	2	19	21.05 %	9	10	90.00 %
<b>TOWNS</b>									
Brighton	1	3	33.33 %	1	3	33.33 %	0	1	0.00 %
Chili	3	16	18.75 %	3	5	60.00 %	1	1	100.00 %
Clarkson	1	5	20.00 %	0	0	0.00 %	0	0	0.00 %
East Rochester	1	3	33.33 %	0	1	0.00 %	1	1	100.00 %
Gates	2	8	25.00 %	4	6	66.67 %	3	3	100.00 %
Greece	6	34	17.65 %	1	5	20.00 %	2	2	100.00 %
Hamlin	0	0	0.00 %	0	1	0.00 %	0	0	0.00 %
Henrietta	3	14	21.43 %	1	4	25.00 %	0	1	0.00 %
Irondequoit	2	10	20.00 %	1	6	16.67 %	1	2	50.00 %
Mendon	0	1	0.00 %	0	0	0.00 %	1	0	0.00 %
Ogden	2	5	40.00 %	1	1	100.00 %	0	0	0.00 %
Parma	4	9	44.44 %	0	2	0.00 %	2	3	66.67 %
Penfield	0	6	0.00 %	1	6	16.67 %	0	2	0.00 %
Perinton	0	6	0.00 %	0	2	0.00 %	0	0	0.00 %
Pittsford	1	4	25.00 %	1	2	50.00 %	0	1	0.00 %
Riga	0	0	0.00 %	0	1	0.00 %	0	0	0.00 %
Rush	0	2	0.00 %	0	1	0.00 %	0	0	0.00 %
Sweden	0	5	0.00 %	0	0	0.00 %	0	0	0.00 %
Webster	1	8	12.50 %	0	4	0.00 %	1	3	33.33 %
Wheatland	1	2	50.00 %	0	0	0.00 %	0	0	0.00 %
TOTAL:	28	141	19.86 %	3	50	28.00 %	12	20	60.00 %
GRAND TOTAL:	34	213	15.96 %	18	69	26.09 %	21	30	70.00 %

# WORKING FAMILIES TURNOUT - TOTAL AND GENDER 2007 GENERAL ELECTION



## WORKING FAMILIES TURNOUT BY AGE GROUP 2007 GENERAL ELECTION



# **BLANKS SUMMARY**

2007 GENERAL ELECTION  
BLANK TURNOUT BY GENDER

LT/LD SUMMARY

LEGISLATIVE DISTRICT OR TOWN <b>CITY</b>	TOTAL VOTERS			MALES			FEMALES		
	VOTED	REGISTERED	TURNOUT	VOTED	REGISTERED	TURNOUT	VOTED	REGISTERED	TURNOUT
Leg. Dist. 06	174	735	23.67 %	90	329	27.36 %	84	406	20.69 %
Leg. Dist. 07	82	330	24.85 %	45	154	29.22 %	37	176	21.02 %
Leg. Dist. 21	444	2,393	18.55 %	239	1,185	20.17 %	205	1,208	16.97 %
Leg. Dist. 22	62	1,310	4.73 %	31	575	5.39 %	31	735	4.22 %
Leg. Dist. 23	580	2,743	21.14 %	340	1,438	23.64 %	240	1,305	18.39 %
Leg. Dist. 24	381	1,573	24.22 %	214	822	26.03 %	167	751	22.24 %
Leg. Dist. 25	182	1,461	12.46 %	119	770	15.45 %	63	691	9.12 %
Leg. Dist. 26	235	1,424	16.50 %	120	661	18.15 %	115	763	15.07 %
Leg. Dist. 27	240	1,815	13.22 %	118	870	13.56 %	122	945	12.91 %
Leg. Dist. 28	209	1,763	11.85 %	113	771	14.66 %	96	992	9.68 %
Leg. Dist. 29	195	1,824	10.69 %	105	796	13.19 %	90	1,028	8.75 %
<b>TOTAL:</b>	<b>2,784</b>	<b>17,371</b>	<b>16.03 %</b>	<b>1,534</b>	<b>8,371</b>	<b>18.33 %</b>	<b>1,250</b>	<b>9,000</b>	<b>13.89 %</b>
<b>TOWNS</b>									
Brighton	1,396	5,043	27.68 %	718	2,479	28.96 %	678	2,564	26.44 %
Chili	1,114	4,391	25.37 %	598	2,123	28.17 %	516	2,268	22.75 %
Clarkson	213	808	26.36 %	106	401	26.43 %	107	407	26.29 %
East Rochester	358	988	36.23 %	172	448	38.39 %	186	540	34.44 %
Gates	1,041	4,165	24.99 %	536	1,997	26.84 %	505	2,168	23.29 %
Greece	2,720	14,896	18.26 %	1,449	7,064	20.51 %	1,271	7,832	16.23 %
Hamlin	290	1,203	24.11 %	156	589	26.49 %	134	614	21.82 %
Henrietta	1,124	4,825	23.30 %	612	2,420	25.29 %	512	2,405	21.29 %
Irondequoit	2,822	8,298	34.01 %	1,472	3,959	37.18 %	1,350	4,339	31.11 %
Mendon	584	1,398	41.77 %	289	669	43.20 %	295	729	40.47 %
Ogden	750	3,020	24.83 %	405	1,483	27.31 %	345	1,537	22.45 %
Parma	731	2,697	27.10 %	363	1,303	27.86 %	368	1,394	26.40 %
Penfield	1,601	6,128	26.13 %	867	2,925	29.64 %	734	3,203	22.92 %
Perinton	2,119	7,915	26.77 %	1,153	3,911	29.48 %	966	4,004	24.13 %
Pittsford	1,472	4,497	32.73 %	748	2,165	34.55 %	724	2,332	31.05 %
Riga	206	870	23.68 %	111	430	25.81 %	95	440	21.59 %
Rush	219	616	35.55 %	112	307	36.48 %	107	309	34.63 %
Sweden	422	1,472	28.67 %	218	713	30.58 %	204	759	26.88 %
Webster	2,250	7,162	31.42 %	1,163	3,405	34.16 %	1,087	3,757	28.93 %
Wheatland	155	757	20.48 %	85	356	23.88 %	70	401	17.46 %
<b>TOTAL:</b>	<b>21,587</b>	<b>81,149</b>	<b>26.60 %</b>	<b>11,333</b>	<b>39,147</b>	<b>28.95 %</b>	<b>10,254</b>	<b>42,002</b>	<b>24.41 %</b>
<b>GRAND TOTAL:</b>	<b>24,371</b>	<b>98,520</b>	<b>24.74 %</b>	<b>12,867</b>	<b>47,518</b>	<b>27.08 %</b>	<b>11,504</b>	<b>51,002</b>	<b>22.56 %</b>

2007 GENERAL ELECTION  
BLANK TURNOUT BY AGE

LT/LD SUMMARY  
Part 1 of 2

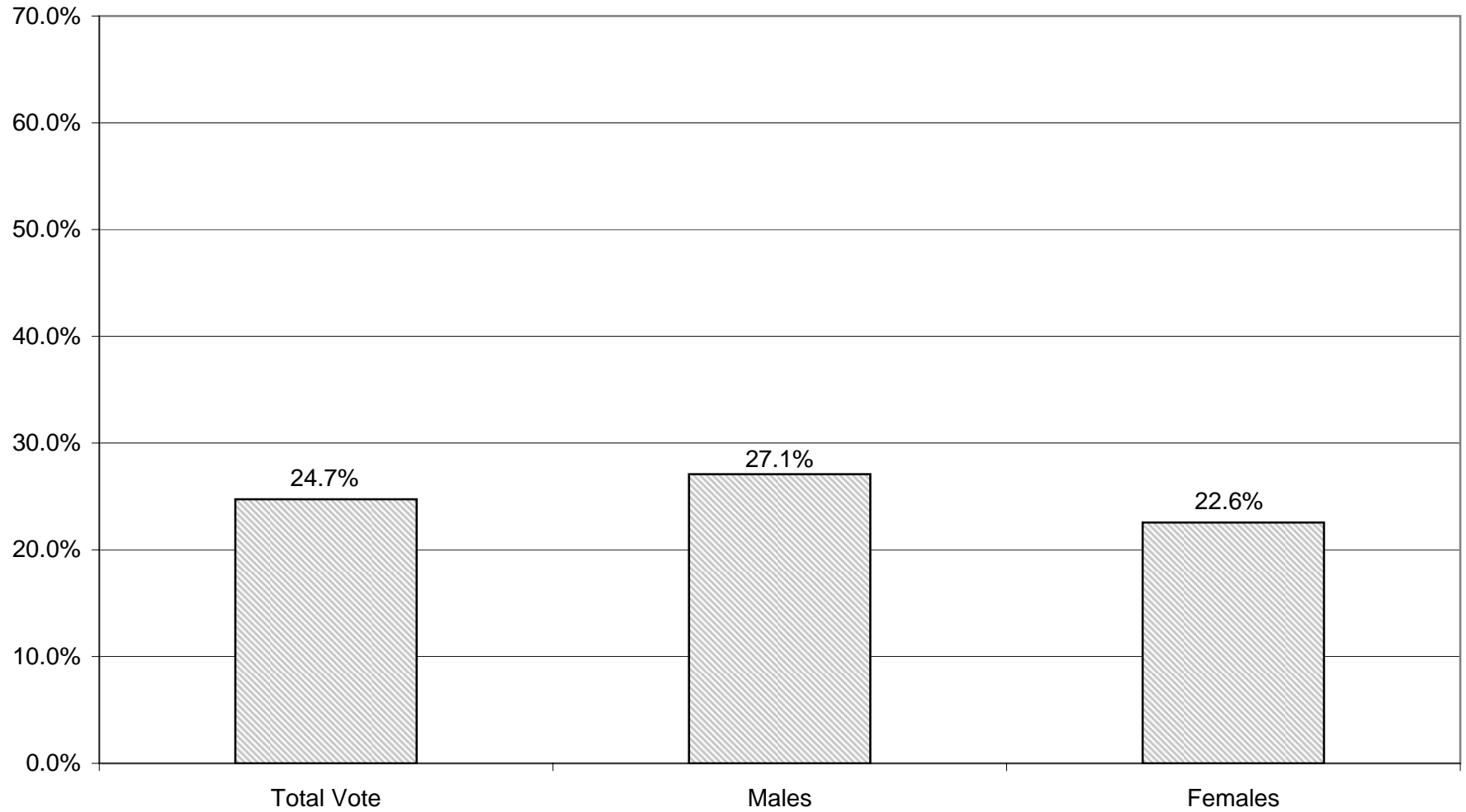
LEGISLATIVE DISTRICT OR TOWN CITY	NDOB			18-24			25-34			35-44		
	VOTED	REGISTERED	TURNOUT	VOTED	REGISTERED	TURNOUT	VOTED	REGISTERED	TURNOUT	VOTED	REGISTERED	TURNOUT
Leg. Dist. 06	1	4	25.00 %	1	53	1.89 %	13	168	7.74 %	26	118	22.03 %
Leg. Dist. 07	0	0	0.00 %	5	31	16.13 %	2	55	3.64 %	7	57	12.28 %
Leg. Dist. 21	5	7	71.43 %	14	230	6.09 %	56	646	8.67 %	66	522	12.64 %
Leg. Dist. 22	2	6	33.33 %	5	216	2.31 %	2	364	0.55 %	13	297	4.38 %
Leg. Dist. 23	10	16	62.50 %	18	229	7.86 %	87	839	10.37 %	101	575	17.57 %
Leg. Dist. 24	5	5	100.00 %	6	122	4.92 %	53	432	12.27 %	65	307	21.17 %
Leg. Dist. 25	2	4	50.00 %	8	284	2.82 %	19	357	5.32 %	24	264	9.09 %
Leg. Dist. 26	2	4	50.00 %	3	170	1.76 %	22	374	5.88 %	38	294	12.93 %
Leg. Dist. 27	8	14	57.14 %	13	238	5.46 %	25	450	5.56 %	34	383	8.88 %
Leg. Dist. 28	4	13	30.77 %	12	270	4.44 %	10	401	2.49 %	30	363	8.26 %
Leg. Dist. 29	3	10	30.00 %	3	222	1.35 %	14	407	3.44 %	17	381	4.46 %
TOTAL:	42	83	50.60 %	88	2,065	4.26 %	303	4,493	6.74 %	421	3,561	11.82 %
<b>TOWNS</b>												
Brighton	14	39	35.90 %	27	471	5.73 %	93	819	11.36 %	174	844	20.62 %
Chili	7	19	36.84 %	23	510	4.51 %	68	823	8.26 %	147	784	18.75 %
Clarkson	0	0	0.00 %	9	89	10.11 %	12	120	10.00 %	51	194	26.29 %
East Rochester	8	11	72.73 %	8	115	6.96 %	36	210	17.14 %	64	169	37.87 %
Gates	3	9	33.33 %	25	436	5.73 %	70	854	8.20 %	127	786	16.16 %
Greece	36	81	44.44 %	58	1,649	3.52 %	149	2,633	5.66 %	270	2,526	10.69 %
Hamlin	1	1	100.00 %	11	148	7.43 %	10	190	5.26 %	57	251	22.71 %
Henrietta	4	11	36.36 %	22	456	4.82 %	84	943	8.91 %	153	944	16.21 %
Irondequoit	39	75	52.00 %	70	771	9.08 %	192	1,407	13.65 %	385	1,418	27.15 %
Mendon	4	4	100.00 %	15	160	9.38 %	26	133	19.55 %	91	277	32.85 %
Ogden	8	15	53.33 %	14	306	4.58 %	37	491	7.54 %	113	597	18.93 %
Parma	2	3	66.67 %	25	405	6.17 %	35	409	8.56 %	120	508	23.62 %
Penfield	16	33	48.48 %	30	537	5.59 %	84	857	9.80 %	209	1,090	19.17 %
Perinton	8	14	57.14 %	41	821	4.99 %	99	1,083	9.14 %	268	1,409	19.02 %
Pittsford	11	17	64.71 %	26	419	6.21 %	55	500	11.00 %	202	762	26.51 %
Riga	0	1	0.00 %	8	96	8.33 %	11	125	8.80 %	24	185	12.97 %
Rush	1	1	100.00 %	8	49	16.33 %	6	71	8.45 %	27	95	28.42 %
Sweden	0	1	0.00 %	12	163	7.36 %	29	258	11.24 %	55	279	19.71 %
Webster	25	47	53.19 %	49	609	8.05 %	121	995	12.16 %	324	1,397	23.19 %
Wheatland	0	1	0.00 %	5	87	5.75 %	13	136	9.56 %	25	135	18.52 %
TOTAL:	187	383	48.83 %	486	8,297	5.86 %	1,230	13,057	9.42 %	2,886	14,650	19.70 %
GRAND TOTAL:	229	466	49.14 %	574	10,362	5.54 %	1,533	17,550	8.74 %	3,307	18,211	18.16 %

2007 GENERAL ELECTION  
BLANK TURNOUT BY AGE

LT/LD SUMMARY  
Part 2 of 2

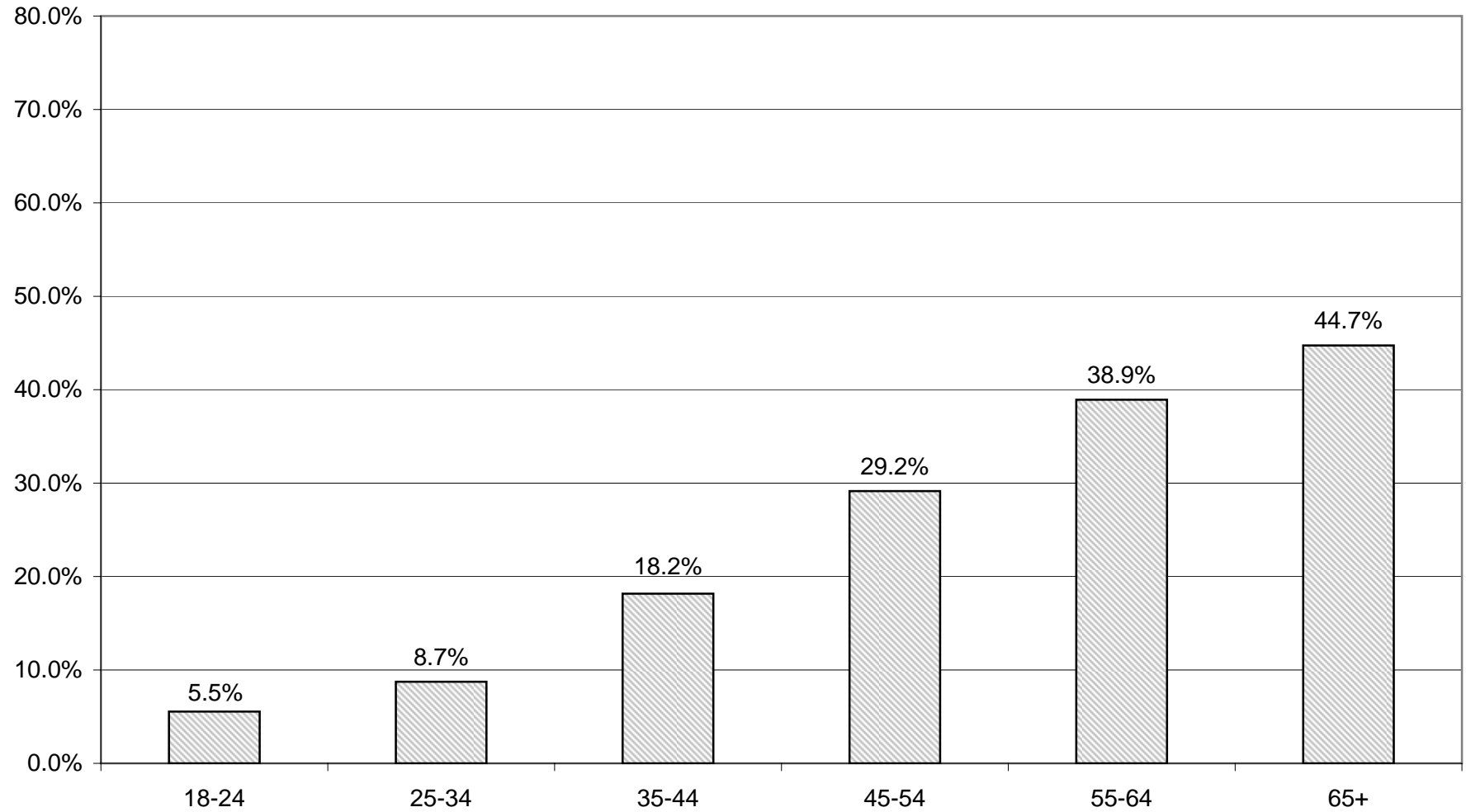
LEGISLATIVE DISTRICT OR TOWN CITY	45-54			55-64			65+		
	VOTED	REGISTERED	TURNOUT	VOTED	REGISTERED	TURNOUT	VOTED	REGISTERED	TURNOUT
Leg. Dist. 06	53	183	28.96 %	35	114	30.70 %	45	95	47.37 %
Leg. Dist. 07	18	82	21.95 %	23	64	35.94 %	27	41	65.85 %
Leg. Dist. 21	115	439	26.20 %	117	338	34.62 %	71	211	33.65 %
Leg. Dist. 22	14	219	6.39 %	17	140	12.14 %	9	68	13.24 %
Leg. Dist. 23	120	436	27.52 %	144	398	36.18 %	100	250	40.00 %
Leg. Dist. 24	89	274	32.48 %	85	242	35.12 %	78	191	40.84 %
Leg. Dist. 25	44	246	17.89 %	46	175	26.29 %	39	131	29.77 %
Leg. Dist. 26	74	292	25.34 %	58	181	32.04 %	38	109	34.86 %
Leg. Dist. 27	65	342	19.01 %	61	250	24.40 %	34	138	24.64 %
Leg. Dist. 28	60	356	16.85 %	55	217	25.35 %	38	143	26.57 %
Leg. Dist. 29	55	356	15.45 %	61	267	22.85 %	42	181	23.20 %
TOTAL:	707	3,225	21.92 %	702	2,386	29.42 %	521	1,558	33.44 %
<b>TOWNS</b>									
Brighton	319	1,027	31.06 %	381	925	41.19 %	388	918	42.27 %
Chili	328	1,023	32.06 %	301	782	38.49 %	240	450	53.33 %
Clarkson	57	214	26.64 %	50	119	42.02 %	34	72	47.22 %
East Rochester	86	211	40.76 %	90	161	55.90 %	66	111	59.46 %
Gates	251	841	29.85 %	251	640	39.22 %	314	599	52.42 %
Greece	690	3,499	19.72 %	847	2,741	30.90 %	670	1,767	37.92 %
Hamlin	90	307	29.32 %	89	224	39.73 %	32	82	39.02 %
Henrietta	303	1,099	27.57 %	299	801	37.33 %	259	571	45.36 %
Irondequoit	715	1,840	38.86 %	767	1,534	50.00 %	654	1,253	52.19 %
Mendon	211	408	51.72 %	158	275	57.45 %	79	141	56.03 %
Ogden	239	809	29.54 %	209	523	39.96 %	130	279	46.59 %
Parma	232	699	33.19 %	205	454	45.15 %	112	219	51.14 %
Penfield	491	1,559	31.49 %	447	1,225	36.49 %	324	827	39.18 %
Perinton	547	1,815	30.14 %	656	1,680	39.05 %	500	1,093	45.75 %
Pittsford	381	1,086	35.08 %	385	909	42.35 %	412	804	51.24 %
Riga	59	229	25.76 %	60	151	39.74 %	44	83	53.01 %
Rush	56	180	31.11 %	76	143	53.15 %	45	77	58.44 %
Sweden	125	366	34.15 %	134	268	50.00 %	67	137	48.91 %
Webster	602	1,776	33.90 %	637	1,362	46.77 %	492	976	50.41 %
Wheatland	45	199	22.61 %	38	117	32.48 %	29	82	35.37 %
TOTAL:	5,827	19,187	30.37 %	6,080	15,034	40.44 %	4,891	10,541	46.40 %
GRAND TOTAL:	6,534	22,412	29.15 %	6,782	17,420	38.93 %	5,412	12,099	44.73 %

# BLANKS TURNOUT - TOTAL AND GENDER 2007 GENERAL ELECTION



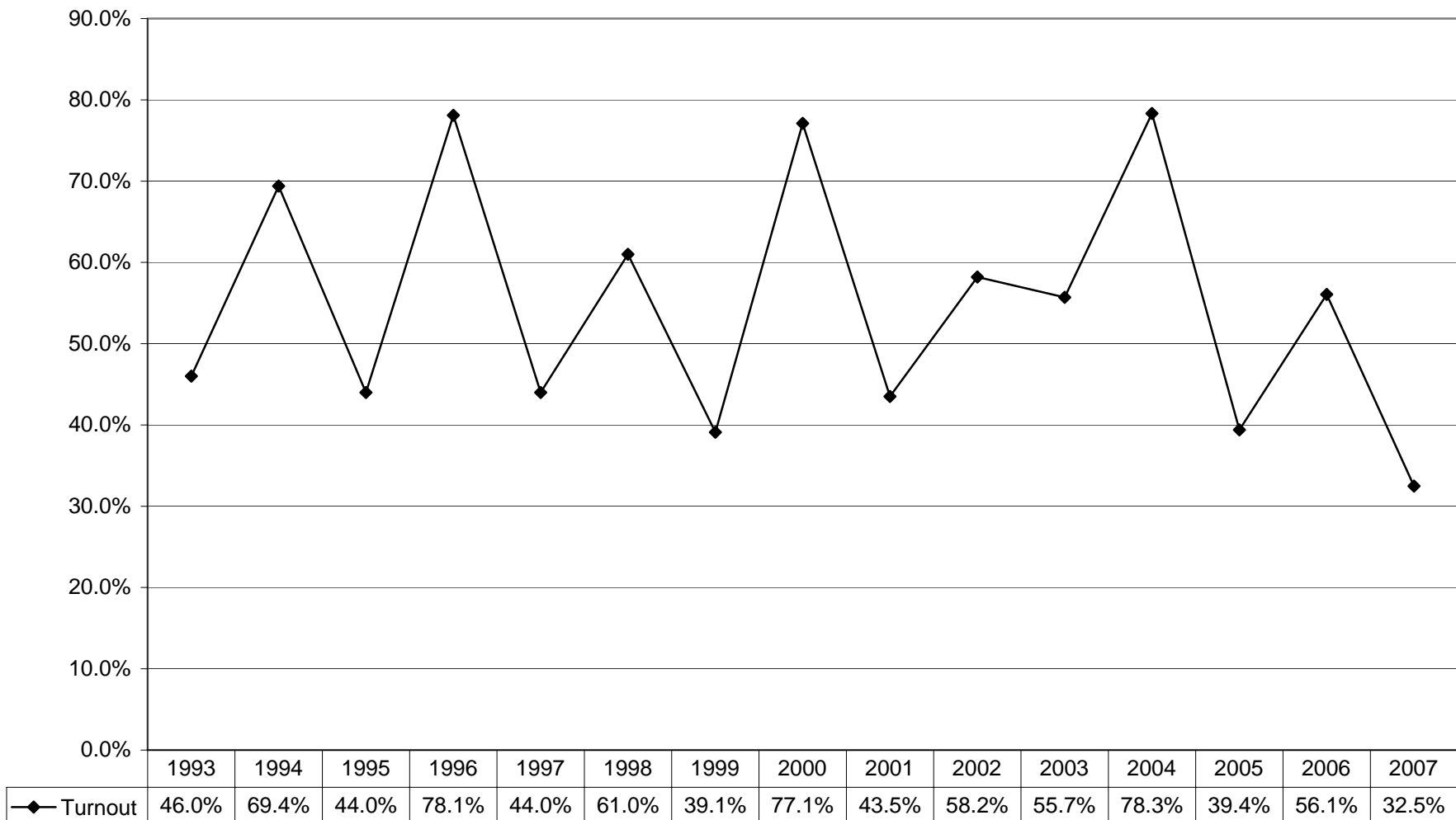


## BLANKS TURNOUT BY AGE GROUP 2007 GENERAL ELECTION

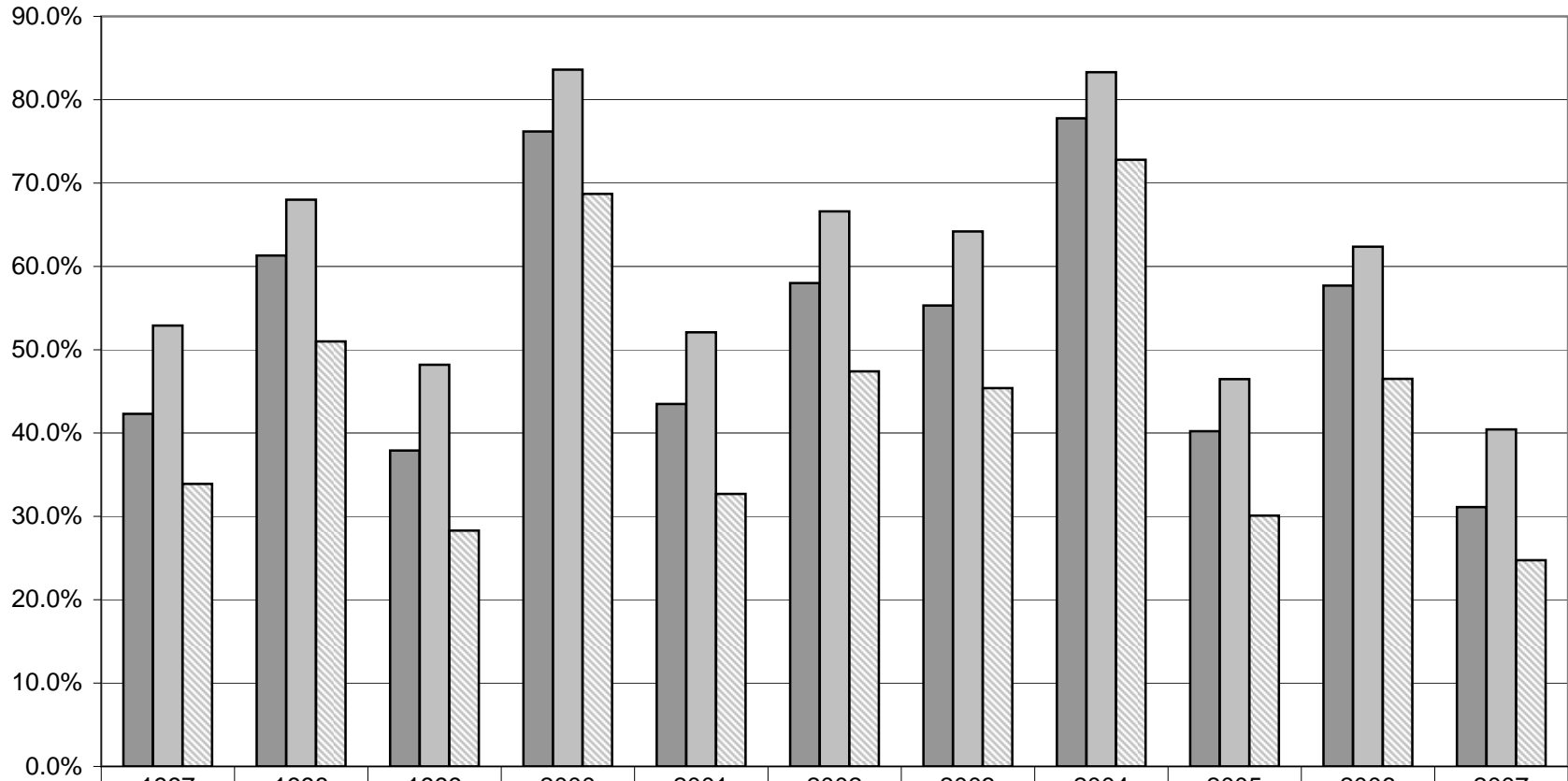


# **HISTORIC DATA**

# VOTER TURNOUT FOR THE GENERAL ELECTION 1993 Through 2007



## VOTER TURNOUT BY PARTY 1997 Through 2007 General Elections



	1997	1998	1999	2000	2001	2002	2003	2004	2005	2006	2007
■ Democrats	42.3%	61.3%	37.90%	76.20%	43.50%	58.00%	55.30%	77.8%	40.2%	57.7%	31.1%
■ Republicans	52.9%	68.0%	48.20%	83.60%	52.10%	66.60%	64.20%	83.3%	46.5%	62.4%	40.4%
▨ Blanks	33.9%	51.0%	28.30%	68.70%	32.70%	47.40%	45.40%	72.8%	30.1%	46.5%	24.7%