



*2003 General  
Voter Turnout*

# **VOTER TURNOUT SUMMARY REPORT 2003 GENERAL ELECTION**

Monroe County Board of Elections  
39 West Main Street, Rochester, New York 14614

**January 23, 2004**

Peter M. Quinn  
Commissioner of Elections

Thomas F. Ferrarese  
Commissioner of Elections

# CONTENTS DESCRIPTION

General Summary .....	Page 1
Republican Summary .....	Page 12
Democratic Summary .....	Page 18
Independence Summary .....	Page 24
Conservative Summary .....	Page 30
Working Families Summary .....	Page 36
Blanks Summary .....	Page 42
Historical Data .....	Page 48

# **GENERAL SUMMARY**

2003 GENERAL ELECTION  
VOTER TURNOUT BY GENDER

LT/LD SUMMARY

LEGISLATIVE DISTRICT OR TOWN	TOTAL VOTERS			MALES			FEMALES		
	VOTED	REGISTERED	TURNOUT	VOTED	REGISTERED	TURNOUT	VOTED	REGISTERED	TURNOUT
<b>CITY</b>									
Leg. Dist. 06	1,638	2,991	54.76 %	734	1,320	55.61 %	904	1,671	54.10 %
Leg. Dist. 07	846	1,496	56.55 %	364	645	56.43 %	482	851	56.64 %
Leg. Dist. 21	5,735	11,677	49.11 %	2,483	5,002	49.64 %	3,252	6,675	48.72 %
Leg. Dist. 22	2,983	8,647	34.50 %	1,080	3,498	30.87 %	1,903	5,149	36.96 %
Leg. Dist. 23	6,436	11,447	56.22 %	3,122	5,444	57.35 %	3,314	6,003	55.21 %
Leg. Dist. 24	3,903	6,728	58.01 %	1,753	3,057	57.34 %	2,150	3,671	58.57 %
Leg. Dist. 25	4,219	9,237	45.68 %	1,767	4,074	43.37 %	2,452	5,163	47.49 %
Leg. Dist. 26	3,398	6,790	50.04 %	1,523	2,986	51.00 %	1,875	3,804	49.29 %
Leg. Dist. 27	6,244	12,226	51.07 %	2,482	5,179	47.92 %	3,762	7,047	53.38 %
Leg. Dist. 28	3,458	8,370	41.31 %	1,537	3,493	44.00 %	1,921	4,877	39.39 %
Leg. Dist. 29	4,120	9,730	42.34 %	1,676	4,001	41.89 %	2,444	5,729	42.66 %
<b>TOTAL:</b>	<b>42,980</b>	<b>89,339</b>	<b>48.11 %</b>	<b>18,521</b>	<b>38,699</b>	<b>47.86 %</b>	<b>24,459</b>	<b>50,640</b>	<b>48.30 %</b>
<b>TOWNS</b>									
Brighton	13,358	21,152	63.15 %	6,012	9,376	64.12 %	7,346	11,776	62.38 %
Chili	10,211	17,321	58.95 %	4,876	8,150	59.83 %	5,335	9,171	58.17 %
Clarkson	1,875	3,465	54.11 %	936	1,666	56.18 %	939	1,799	52.20 %
East Rochester	2,026	3,626	55.87 %	899	1,577	57.01 %	1,127	2,049	55.00 %
Gates	9,192	17,272	53.22 %	4,284	7,969	53.76 %	4,908	9,303	52.76 %
Greece	30,913	58,366	52.96 %	14,675	26,871	54.61 %	16,238	31,495	51.56 %
Hamlin	2,894	5,034	57.49 %	1,448	2,450	59.10 %	1,446	2,584	55.96 %
Henrietta	10,692	18,835	56.77 %	5,112	8,885	57.54 %	5,580	9,950	56.08 %
Irondequoit	19,896	33,429	59.52 %	9,124	14,944	61.05 %	10,772	18,485	58.27 %
Mendon	3,546	5,827	60.85 %	1,756	2,827	62.12 %	1,790	3,000	59.67 %
Ogden	6,490	11,304	57.41 %	3,146	5,385	58.42 %	3,344	5,919	56.50 %
Parma	5,116	9,062	56.46 %	2,545	4,362	58.34 %	2,571	4,700	54.70 %
Penfield	13,643	22,642	60.26 %	6,604	10,619	62.19 %	7,039	12,023	58.55 %
Perinton	18,162	30,667	59.22 %	8,755	14,353	61.00 %	9,407	16,314	57.66 %
Pittsford	10,967	17,813	61.57 %	5,237	8,364	62.61 %	5,730	9,449	60.64 %
Riga	2,061	3,532	58.35 %	992	1,686	58.84 %	1,069	1,846	57.91 %
Rush	1,490	2,407	61.90 %	737	1,180	62.46 %	753	1,227	61.37 %
Sweden	3,550	6,089	58.30 %	1,713	2,843	60.25 %	1,837	3,246	56.59 %
Webster	14,716	24,897	59.11 %	7,085	11,671	60.71 %	7,631	13,226	57.70 %
Wheatland	1,814	3,112	58.29 %	867	1,472	58.90 %	947	1,640	57.74 %
<b>TOTAL:</b>	<b>182,612</b>	<b>315,852</b>	<b>57.82 %</b>	<b>86,803</b>	<b>146,650</b>	<b>59.19 %</b>	<b>95,809</b>	<b>169,202</b>	<b>56.62 %</b>
<b>GRAND TOTAL:</b>	<b>225,592</b>	<b>405,191</b>	<b>55.68 %</b>	<b>105,324</b>	<b>185,349</b>	<b>56.82 %</b>	<b>120,268</b>	<b>219,842</b>	<b>54.71 %</b>

2003 GENERAL ELECTION  
VOTER TURNOUT BY PARTY

LT/LD SUMMARY  
Part 1 of 2

LEGISLATIVE DISTRICT OR TOWN	REPUBLICAN			DEMOCRAT			INDEPENDENCE		
	VOTED	REGISTERED	TURNOUT	VOTED	REGISTERED	TURNOUT	VOTED	REGISTERED	TURNOUT
<b>CITY</b>									
Leg. Dist. 06	624	989	63.09 %	584	1,031	56.64 %	46	100	46.00 %
Leg. Dist. 07	309	497	62.17 %	351	578	60.73 %	15	46	32.61 %
Leg. Dist. 21	1,204	2,151	55.97 %	3,316	6,446	51.44 %	122	313	38.98 %
Leg. Dist. 22	246	691	35.60 %	2,443	6,345	38.50 %	26	117	22.22 %
Leg. Dist. 23	1,555	2,632	59.08 %	3,211	5,231	61.38 %	152	388	39.18 %
Leg. Dist. 24	896	1,485	60.34 %	2,042	3,225	63.32 %	86	203	42.36 %
Leg. Dist. 25	450	925	48.65 %	3,153	6,470	48.73 %	58	182	31.87 %
Leg. Dist. 26	998	1,731	57.65 %	1,636	3,101	52.76 %	58	179	32.40 %
Leg. Dist. 27	772	1,336	57.78 %	4,611	8,530	54.06 %	87	239	36.40 %
Leg. Dist. 28	832	1,709	48.68 %	1,935	4,530	42.72 %	65	208	31.25 %
Leg. Dist. 29	798	1,613	49.47 %	2,687	5,982	44.92 %	65	184	35.33 %
<b>TOTAL:</b>	<b>8,684</b>	<b>15,759</b>	<b>55.11 %</b>	<b>25,969</b>	<b>51,469</b>	<b>50.46 %</b>	<b>780</b>	<b>2,159</b>	<b>36.13 %</b>
<b>TOWNS</b>									
Brighton	4,682	6,946	67.41 %	5,685	8,411	67.59 %	209	488	42.83 %
Chili	4,724	7,064	66.87 %	2,919	4,979	58.63 %	198	445	44.49 %
Clarkson	992	1,545	64.21 %	450	865	52.02 %	33	113	29.20 %
East Rochester	893	1,424	62.71 %	589	1,059	55.62 %	41	107	38.32 %
Gates	4,139	6,573	62.97 %	2,974	5,668	52.47 %	154	389	39.59 %
Greece	14,873	23,942	62.12 %	8,279	16,087	51.46 %	532	1,478	35.99 %
Hamlin	1,627	2,369	68.68 %	588	1,098	53.55 %	59	151	39.07 %
Henrietta	4,564	7,062	64.63 %	3,448	5,991	57.55 %	187	483	38.72 %
Irondequoit	8,113	12,332	65.79 %	6,726	11,164	60.25 %	379	829	45.72 %
Mendon	1,777	2,718	65.38 %	852	1,431	59.54 %	56	136	41.18 %
Ogden	3,262	4,996	65.29 %	1,507	2,710	55.61 %	119	257	46.30 %
Parma	2,555	3,946	64.75 %	1,118	2,037	54.88 %	95	225	42.22 %
Penfield	6,247	9,283	67.30 %	3,773	6,213	60.73 %	270	618	43.69 %
Perinton	8,762	13,258	66.09 %	4,907	8,265	59.37 %	335	835	40.12 %
Pittsford	5,437	8,044	67.59 %	2,965	4,736	62.61 %	145	361	40.17 %
Riga	1,107	1,716	64.51 %	443	772	57.38 %	29	92	31.52 %
Rush	726	1,038	69.94 %	359	601	59.73 %	22	51	43.14 %
Sweden	1,692	2,554	66.25 %	1,001	1,704	58.74 %	80	196	40.82 %
Webster	6,509	9,751	66.75 %	4,114	7,012	58.67 %	310	655	47.33 %
Wheatland	860	1,324	64.95 %	515	859	59.95 %	31	81	38.27 %
<b>TOTAL:</b>	<b>83,541</b>	<b>127,885</b>	<b>65.33 %</b>	<b>53,212</b>	<b>91,662</b>	<b>58.05 %</b>	<b>3,284</b>	<b>7,990</b>	<b>41.10 %</b>
<b>GRAND TOTAL:</b>	<b>92,225</b>	<b>143,644</b>	<b>64.20 %</b>	<b>79,181</b>	<b>143,131</b>	<b>55.32 %</b>	<b>4,064</b>	<b>10,149</b>	<b>40.04 %</b>

2003 GENERAL ELECTION  
VOTER TURNOUT BY PARTY

LT/LD SUMMARY  
Part 2 of 2

LEGISLATIVE DISTRICT OR TOWN	CONSERVATIVE			WORKING FAMILIES			BLANK		
	VOTED	REGISTERED	TURNOUT	VOTED	REGISTERED	TURNOUT	VOTED	REGISTERED	TURNOUT
<b>CITY</b>									
Leg. Dist. 06	54	96	56.25 %	0	4	0.00 %	330	771	42.80 %
Leg. Dist. 07	19	30	63.33 %	0	0	0.00 %	152	345	44.06 %
Leg. Dist. 21	69	122	56.56 %	3	30	10.00 %	1,021	2,615	39.04 %
Leg. Dist. 22	18	43	41.86 %	0	33	0.00 %	250	1,418	17.63 %
Leg. Dist. 23	56	108	51.85 %	4	17	23.53 %	1,458	3,071	47.48 %
Leg. Dist. 24	49	86	56.98 %	3	6	50.00 %	827	1,723	48.00 %
Leg. Dist. 25	30	56	53.57 %	5	21	23.81 %	523	1,583	33.04 %
Leg. Dist. 26	82	148	55.41 %	7	17	41.18 %	617	1,614	38.23 %
Leg. Dist. 27	51	91	56.04 %	11	28	39.29 %	712	2,002	35.56 %
Leg. Dist. 28	75	141	53.19 %	5	34	14.71 %	546	1,748	31.24 %
Leg. Dist. 29	47	105	44.76 %	1	22	4.55 %	522	1,824	28.62 %
<b>TOTAL:</b>	<b>550</b>	<b>1,026</b>	<b>53.61 %</b>	<b>39</b>	<b>212</b>	<b>18.40 %</b>	<b>6,958</b>	<b>18,714</b>	<b>37.18 %</b>
<b>TOWNS</b>									
Brighton	124	204	60.78 %	7	13	53.85 %	2,651	5,090	52.08 %
Chili	315	463	68.03 %	9	17	52.94 %	2,046	4,353	47.00 %
Clarkson	57	103	55.34 %	2	4	50.00 %	341	835	40.84 %
East Rochester	47	71	66.20 %	0	3	0.00 %	456	962	47.40 %
Gates	228	384	59.38 %	3	15	20.00 %	1,694	4,243	39.92 %
Greece	822	1,567	52.46 %	17	69	24.64 %	6,390	15,223	41.98 %
Hamlin	82	137	59.85 %	1	5	20.00 %	537	1,274	42.15 %
Henrietta	319	530	60.19 %	3	18	16.67 %	2,171	4,751	45.70 %
Irondequoit	457	728	62.77 %	10	31	32.26 %	4,211	8,345	50.46 %
Mendon	67	99	67.68 %	2	3	66.67 %	792	1,440	55.00 %
Ogden	226	352	64.20 %	5	14	35.71 %	1,371	2,975	46.08 %
Parma	151	240	62.92 %	3	15	20.00 %	1,194	2,599	45.94 %
Penfield	248	391	63.43 %	2	15	13.33 %	3,103	6,122	50.69 %
Perinton	279	461	60.52 %	1	10	10.00 %	3,878	7,838	49.48 %
Pittsford	130	197	65.99 %	5	6	83.33 %	2,285	4,469	51.13 %
Riga	52	81	64.20 %	2	6	33.33 %	428	865	49.48 %
Rush	36	51	70.59 %	2	3	66.67 %	345	663	52.04 %
Sweden	65	123	52.85 %	5	9	55.56 %	707	1,503	47.04 %
Webster	346	537	64.43 %	4	15	26.67 %	3,433	6,927	49.56 %
Wheatland	42	70	60.00 %	1	3	33.33 %	365	775	47.10 %
<b>TOTAL:</b>	<b>4,093</b>	<b>6,789</b>	<b>60.29 %</b>	<b>84</b>	<b>274</b>	<b>30.66 %</b>	<b>38,398</b>	<b>81,252</b>	<b>47.26 %</b>
<b>GRAND TOTAL:</b>	<b>4,643</b>	<b>7,815</b>	<b>59.41 %</b>	<b>123</b>	<b>486</b>	<b>25.31 %</b>	<b>45,356</b>	<b>99,966</b>	<b>45.37 %</b>

2003 GENERAL ELECTION  
VOTER TURNOUT BY AGE

LT/LD SUMMARY  
Part 1 of 2

LEGISLATIVE DISTRICT OR TOWN CITY	NDOB			18-24			25-34			35-44		
	VOTED	REGISTERED	TURNOUT	VOTED	REGISTERED	TURNOUT	VOTED	REGISTERED	TURNOUT	VOTED	REGISTERED	TURNOUT
Leg. Dist. 06	70	98	71.43 %	79	334	23.65 %	235	588	39.97 %	354	654	54.13 %
Leg. Dist. 07	34	49	69.39 %	24	118	20.34 %	71	214	33.18 %	155	284	54.58 %
Leg. Dist. 21	317	448	70.76 %	402	1,644	24.45 %	1,042	2,699	38.61 %	1,263	2,530	49.92 %
Leg. Dist. 22	71	121	58.68 %	219	1,359	16.11 %	433	1,944	22.27 %	719	1,998	35.99 %
Leg. Dist. 23	254	340	74.71 %	615	2,104	29.23 %	1,263	2,840	44.47 %	1,321	2,083	63.42 %
Leg. Dist. 24	141	187	75.40 %	277	870	31.84 %	685	1,414	48.44 %	809	1,347	60.06 %
Leg. Dist. 25	98	139	70.50 %	349	1,445	24.15 %	617	1,885	32.73 %	887	1,964	45.16 %
Leg. Dist. 26	140	194	72.16 %	215	927	23.19 %	572	1,522	37.58 %	812	1,560	52.05 %
Leg. Dist. 27	173	247	70.04 %	436	1,669	26.12 %	1,013	2,602	38.93 %	1,513	2,913	51.94 %
Leg. Dist. 28	145	240	60.42 %	213	1,167	18.25 %	487	1,741	27.97 %	758	1,861	40.73 %
Leg. Dist. 29	199	330	60.30 %	251	1,340	18.73 %	545	1,937	28.14 %	878	2,090	42.01 %
<b>TOTAL:</b>	<b>1,642</b>	<b>2,393</b>	<b>68.62 %</b>	<b>3,080</b>	<b>12,977</b>	<b>23.73 %</b>	<b>6,963</b>	<b>19,386</b>	<b>35.92 %</b>	<b>9,469</b>	<b>19,284</b>	<b>49.10 %</b>
<b>TOWNS</b>												
Brighton	470	657	71.54 %	566	2,044	27.69 %	1,527	3,388	45.07 %	2,599	4,004	64.91 %
Chili	434	561	77.36 %	472	2,044	23.09 %	1,292	3,140	41.15 %	2,427	3,931	61.74 %
Clarkson	3	8	37.50 %	65	344	18.90 %	297	711	41.77 %	492	901	54.61 %
East Rochester	136	184	73.91 %	101	405	24.94 %	294	690	42.61 %	482	826	58.35 %
Gates	167	233	71.67 %	354	1,759	20.13 %	1,006	2,977	33.79 %	1,763	3,456	51.01 %
Greece	1,236	1,714	72.11 %	1,182	6,398	18.47 %	3,130	9,321	33.58 %	6,768	12,811	52.83 %
Hamlin	27	32	84.38 %	137	616	22.24 %	366	921	39.74 %	794	1,329	59.74 %
Henrietta	105	136	77.21 %	492	1,914	25.71 %	1,413	3,616	39.08 %	2,456	4,330	56.72 %
Irondequoit	905	1,323	68.41 %	699	2,801	24.96 %	2,278	5,341	42.65 %	3,974	6,686	59.44 %
Mendon	16	25	64.00 %	89	528	16.86 %	402	931	43.18 %	1,051	1,612	65.20 %
Ogden	145	190	76.32 %	273	1,278	21.36 %	797	1,904	41.86 %	1,793	3,016	59.45 %
Parma	39	62	62.90 %	197	923	21.34 %	621	1,568	39.60 %	1,415	2,402	58.91 %
Penfield	374	502	74.50 %	431	1,889	22.82 %	1,536	3,545	43.33 %	3,333	5,456	61.09 %
Perinton	96	137	70.07 %	614	2,746	22.36 %	2,092	5,057	41.37 %	4,330	7,224	59.94 %
Pittsford	183	244	75.00 %	221	1,336	16.54 %	1,016	2,429	41.83 %	2,527	4,151	60.88 %
Riga	19	32	59.38 %	71	356	19.94 %	248	573	43.28 %	566	947	59.77 %
Rush	48	61	78.69 %	38	197	19.29 %	140	311	45.02 %	366	621	58.94 %
Sweden	44	64	68.75 %	178	796	22.36 %	417	1,030	40.49 %	843	1,379	61.13 %
Webster	349	466	74.89 %	476	2,191	21.73 %	1,772	4,314	41.08 %	3,646	6,027	60.49 %
Wheatland	18	26	69.23 %	86	371	23.18 %	193	487	39.63 %	438	721	60.75 %
<b>TOTAL:</b>	<b>4,814</b>	<b>6,657</b>	<b>72.31 %</b>	<b>6,742</b>	<b>30,936</b>	<b>21.79 %</b>	<b>20,837</b>	<b>52,254</b>	<b>39.88 %</b>	<b>42,063</b>	<b>71,830</b>	<b>58.56 %</b>
<b>GRAND TOTAL:</b>	<b>6,456</b>	<b>9,050</b>	<b>71.34 %</b>	<b>9,822</b>	<b>43,913</b>	<b>22.37 %</b>	<b>27,800</b>	<b>71,640</b>	<b>38.81 %</b>	<b>51,532</b>	<b>91,114</b>	<b>56.56 %</b>

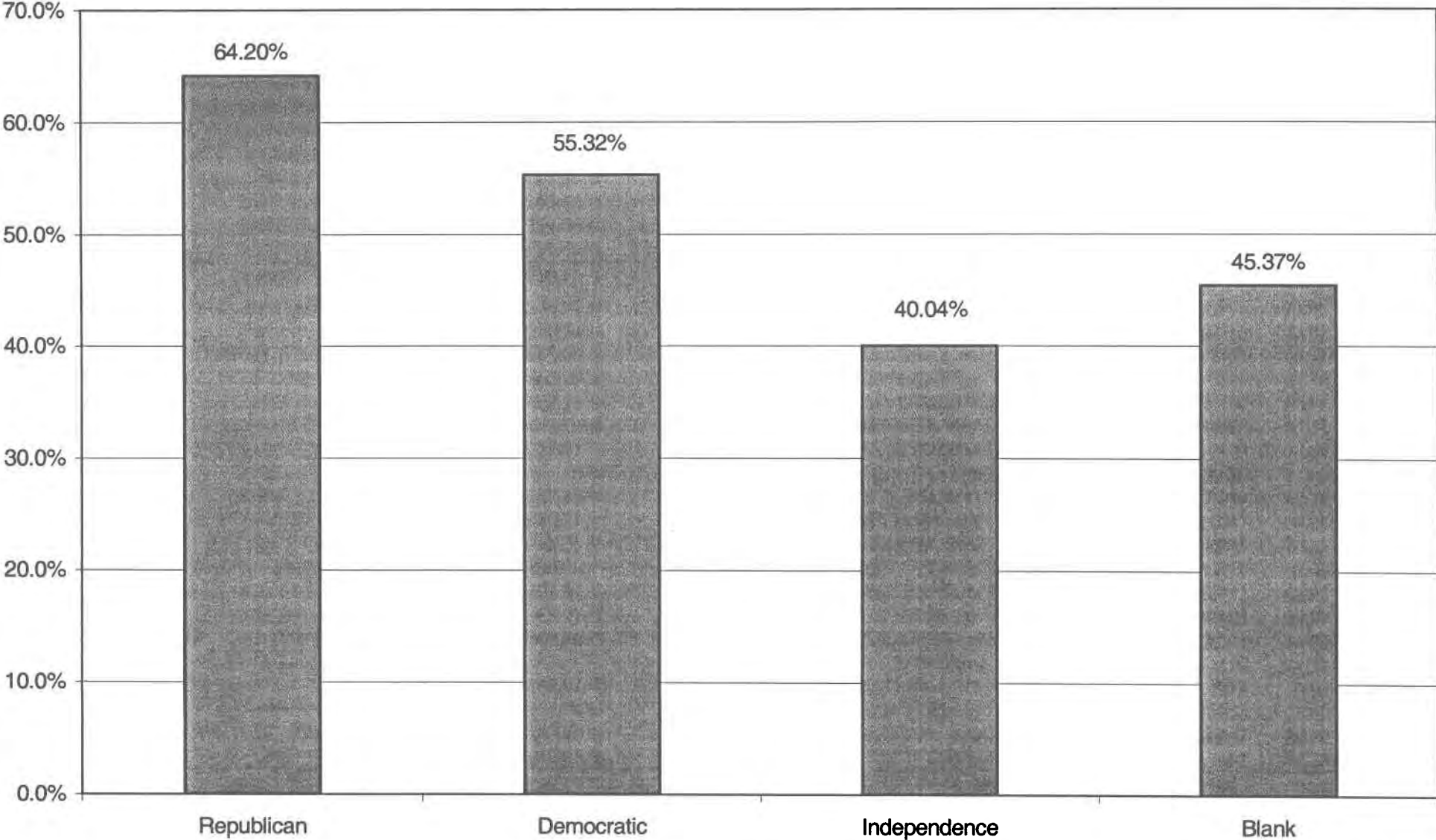
2003 GENERAL ELECTION  
VOTER TURNOUT BY AGE

LT/LD SUMMARY  
Part 2 of 2

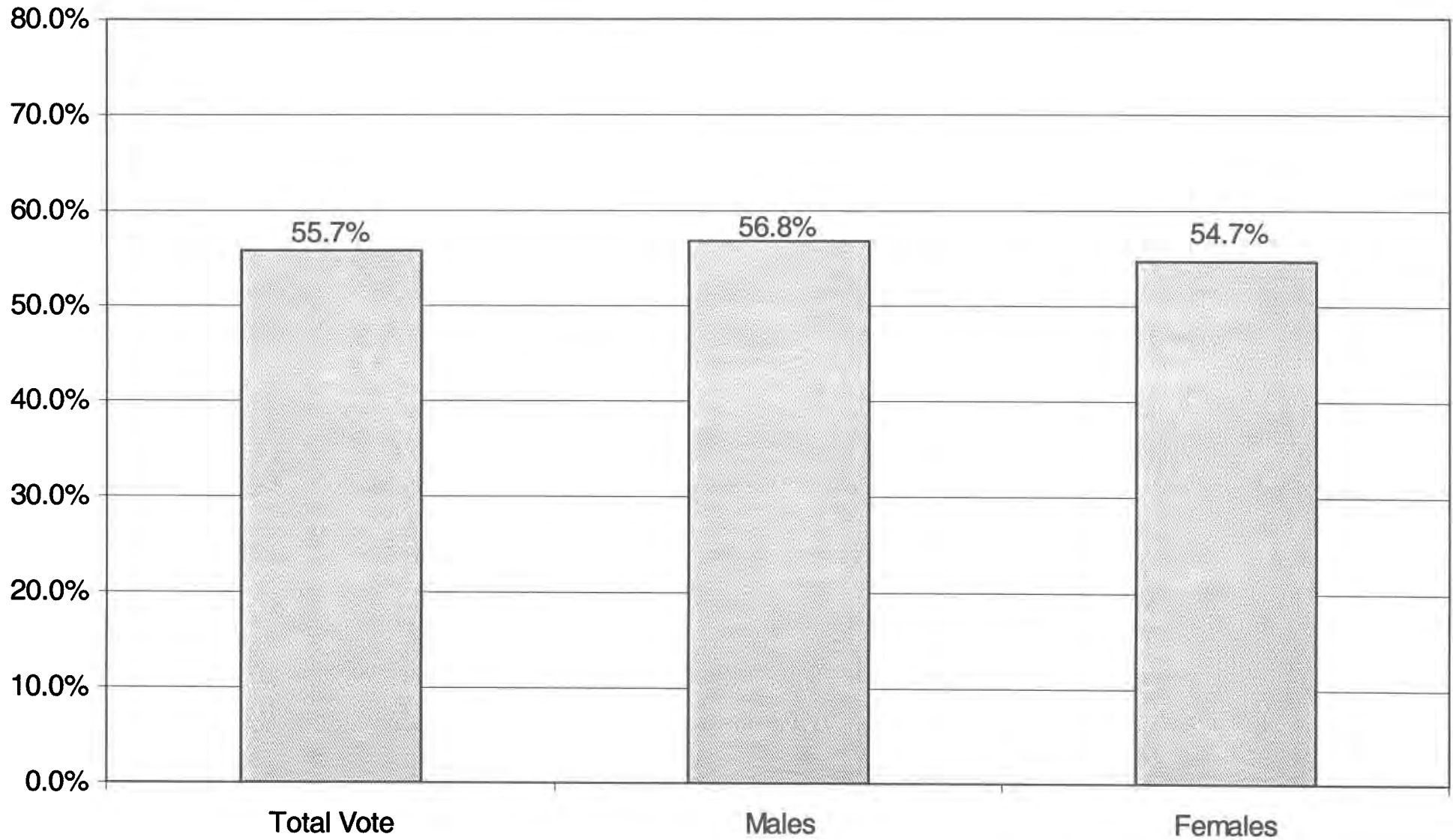
LEGISLATIVE DISTRICT OR TOWN	45-54			55-64			65+		
	VOTED	REGISTERED	TURNOUT	VOTED	REGISTERED	TURNOUT	VOTED	REGISTERED	TURNOUT
Leg. Dist. 06	364	557	65.35 %	220	289	76.12 %	316	471	67.09 %
Leg. Dist. 07	217	326	66.56 %	125	182	68.68 %	220	323	68.11 %
Leg. Dist. 21	1,305	2,107	61.94 %	683	1,053	64.86 %	723	1,196	60.45 %
Leg. Dist. 22	693	1,576	43.97 %	480	926	51.84 %	368	723	50.90 %
Leg. Dist. 23	1,443	2,040	70.74 %	920	1,149	80.07 %	620	891	69.58 %
Leg. Dist. 24	894	1,279	69.90 %	492	669	73.54 %	605	962	62.89 %
Leg. Dist. 25	907	1,586	57.19 %	661	1,057	62.54 %	700	1,161	60.29 %
Leg. Dist. 26	797	1,254	63.56 %	412	616	66.88 %	450	717	62.76 %
Leg. Dist. 27	1,543	2,357	65.46 %	933	1,410	66.17 %	633	1,028	61.58 %
Leg. Dist. 28	792	1,551	51.06 %	513	871	58.90 %	550	939	58.57 %
Leg. Dist. 29	854	1,687	50.62 %	646	1,089	59.32 %	747	1,257	59.43 %
<b>TOTAL:</b>	<b>9,809</b>	<b>16,320</b>	<b>60.10 %</b>	<b>6,085</b>	<b>9,311</b>	<b>65.35 %</b>	<b>5,932</b>	<b>9,668</b>	<b>61.36 %</b>
Brighton	3,218	4,333	74.27 %	1,905	2,437	78.17 %	3,073	4,289	71.65 %
Chili	2,395	3,405	70.34 %	1,552	2,024	76.68 %	1,639	2,216	73.96 %
Clarkson	442	680	65.00 %	296	378	78.31 %	280	443	63.21 %
East Rochester	399	641	62.25 %	255	351	72.65 %	359	529	67.86 %
Gates	1,922	3,074	62.52 %	1,674	2,323	72.06 %	2,306	3,450	66.84 %
Greece	7,396	11,714	63.14 %	4,866	6,723	72.38 %	6,335	9,685	65.41 %
Hamlin	787	1,099	71.61 %	472	597	79.06 %	311	440	70.68 %
Henrietta	2,462	3,691	66.70 %	1,865	2,503	74.51 %	1,899	2,645	71.80 %
Irondequoit	4,521	6,494	69.62 %	2,786	3,735	74.59 %	4,733	7,049	67.14 %
Mendon	951	1,345	70.71 %	592	743	79.68 %	445	643	69.21 %
Ogden	1,633	2,389	68.35 %	974	1,292	75.39 %	875	1,235	70.85 %
Parma	1,235	1,861	66.36 %	908	1,168	77.74 %	701	1,078	65.03 %
Penfield	3,396	4,933	68.84 %	2,192	2,864	76.54 %	2,381	3,453	68.95 %
Perinton	4,755	6,884	69.07 %	3,349	4,437	75.48 %	2,926	4,182	69.97 %
Pittsford	2,720	3,959	68.70 %	1,974	2,553	77.32 %	2,326	3,141	74.05 %
Riga	551	793	69.48 %	314	421	74.58 %	292	410	71.22 %
Rush	395	565	69.91 %	265	339	78.17 %	238	313	76.04 %
Sweden	974	1,339	72.74 %	577	728	79.26 %	517	753	68.66 %
Webster	3,499	5,089	68.76 %	2,392	3,158	75.74 %	2,582	3,652	70.70 %
Wheatland	439	653	67.23 %	300	393	76.34 %	340	461	73.75 %
<b>TOTAL:</b>	<b>44,090</b>	<b>64,941</b>	<b>67.89 %</b>	<b>29,508</b>	<b>39,167</b>	<b>75.34 %</b>	<b>34,558</b>	<b>50,067</b>	<b>69.02 %</b>
<b>GRAND TOTAL:</b>	<b>53,899</b>	<b>81,261</b>	<b>66.33 %</b>	<b>35,593</b>	<b>48,478</b>	<b>73.42 %</b>	<b>40,490</b>	<b>59,735</b>	<b>67.78 %</b>



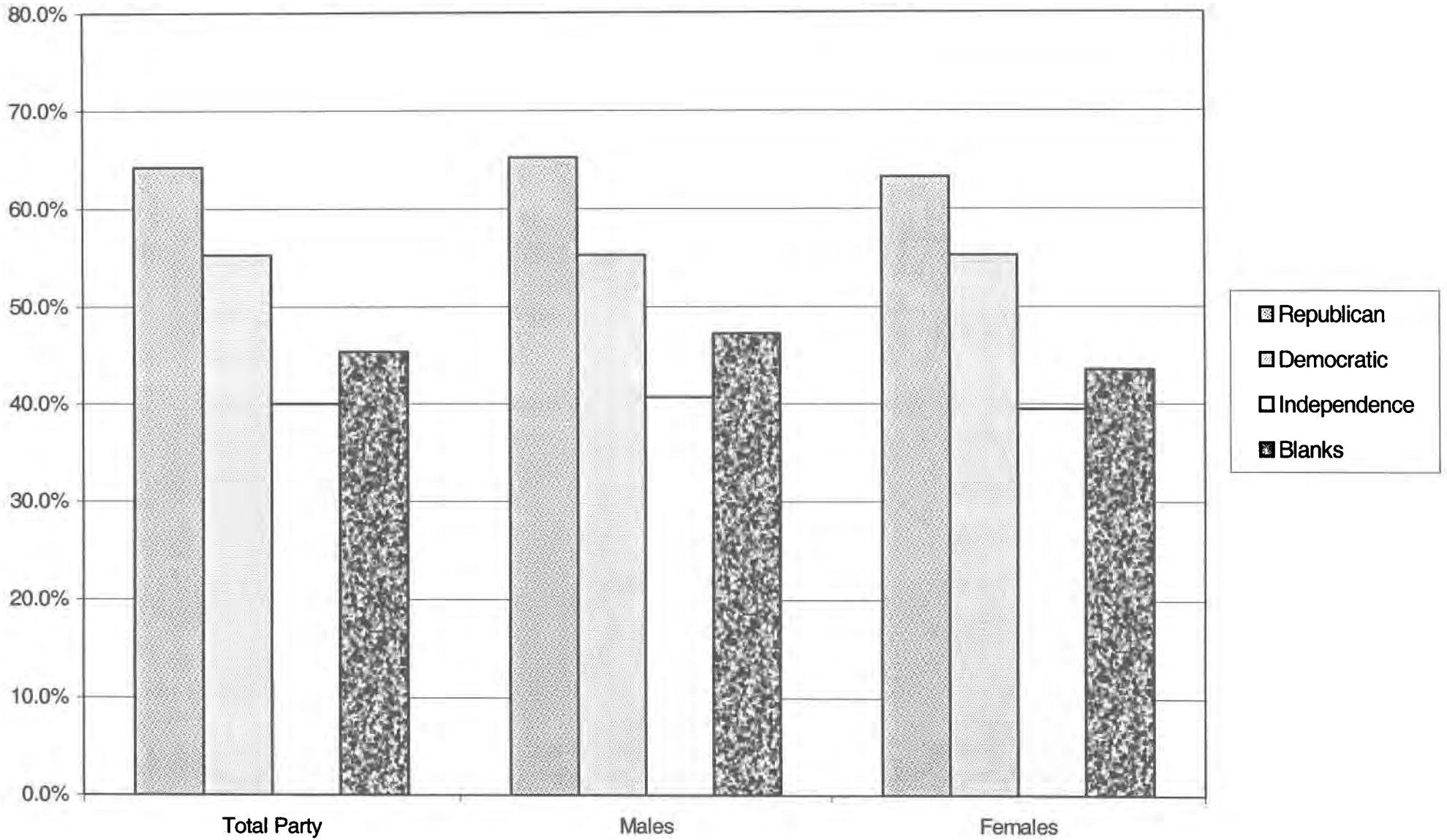
# VOTER TURNOUT BY PARTY 2003 GENERAL ELECTION



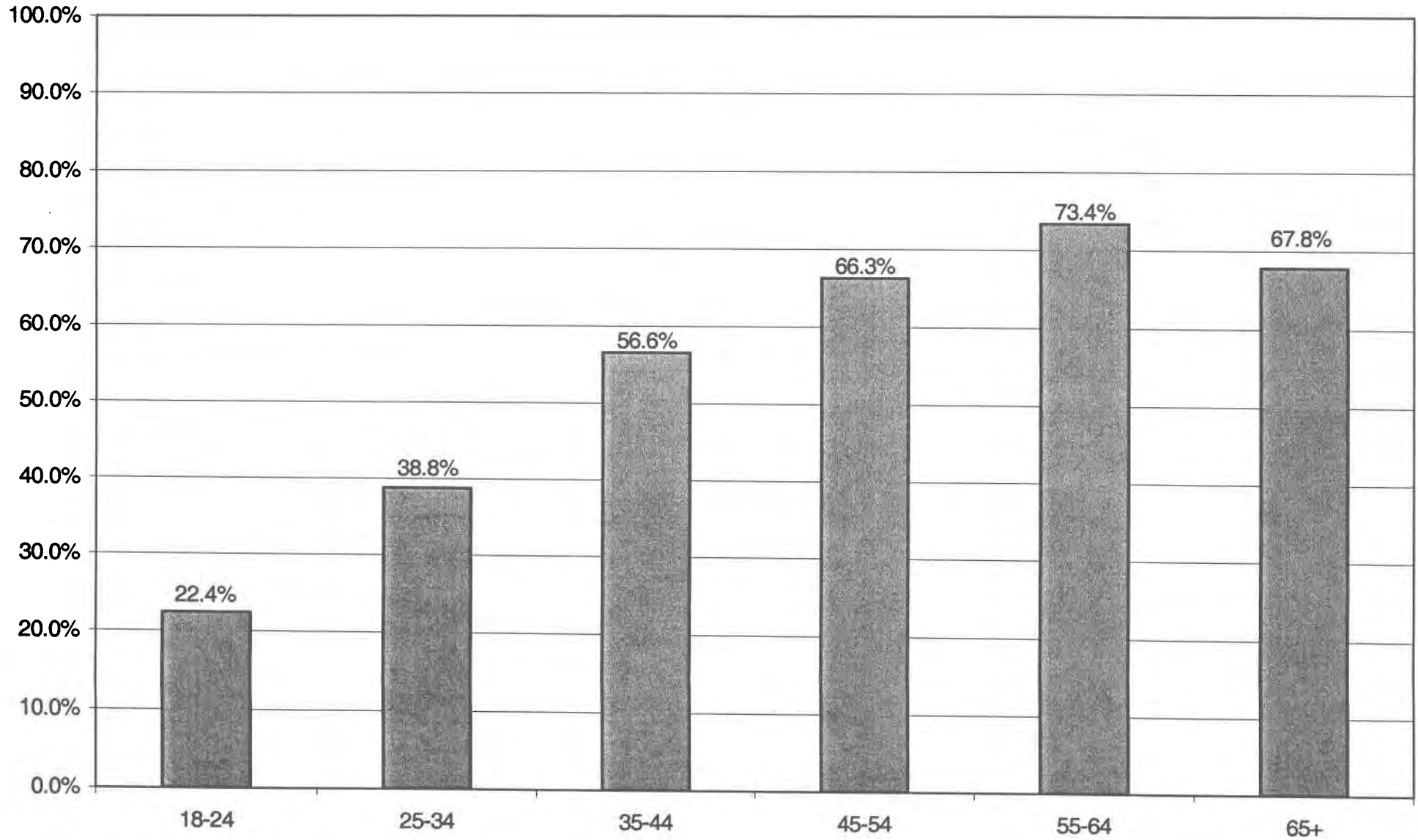
# VOTER TURNOUT - TOTAL AND BY GENDER 2003 GENERAL ELECTION



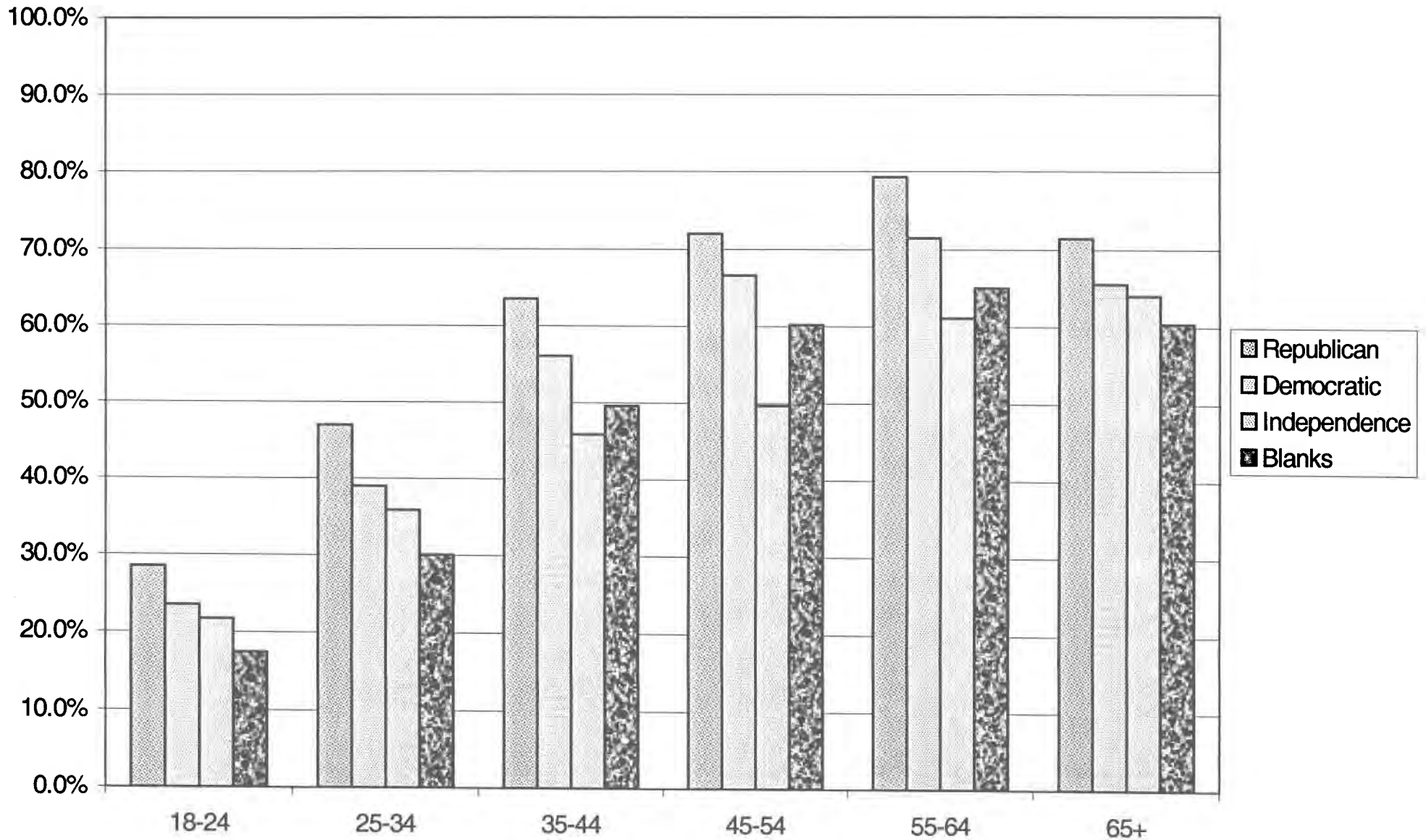
# COMPARISON OF TOTAL AND GENDER TURNOUT 2003 GENERAL ELECTION



# VOTER TURNOUT BY AGE GROUP 2003 GENERAL ELECTION



# COMPARISON OF TURNOUT BY AGE GROUP 2003 GENERAL ELECTION



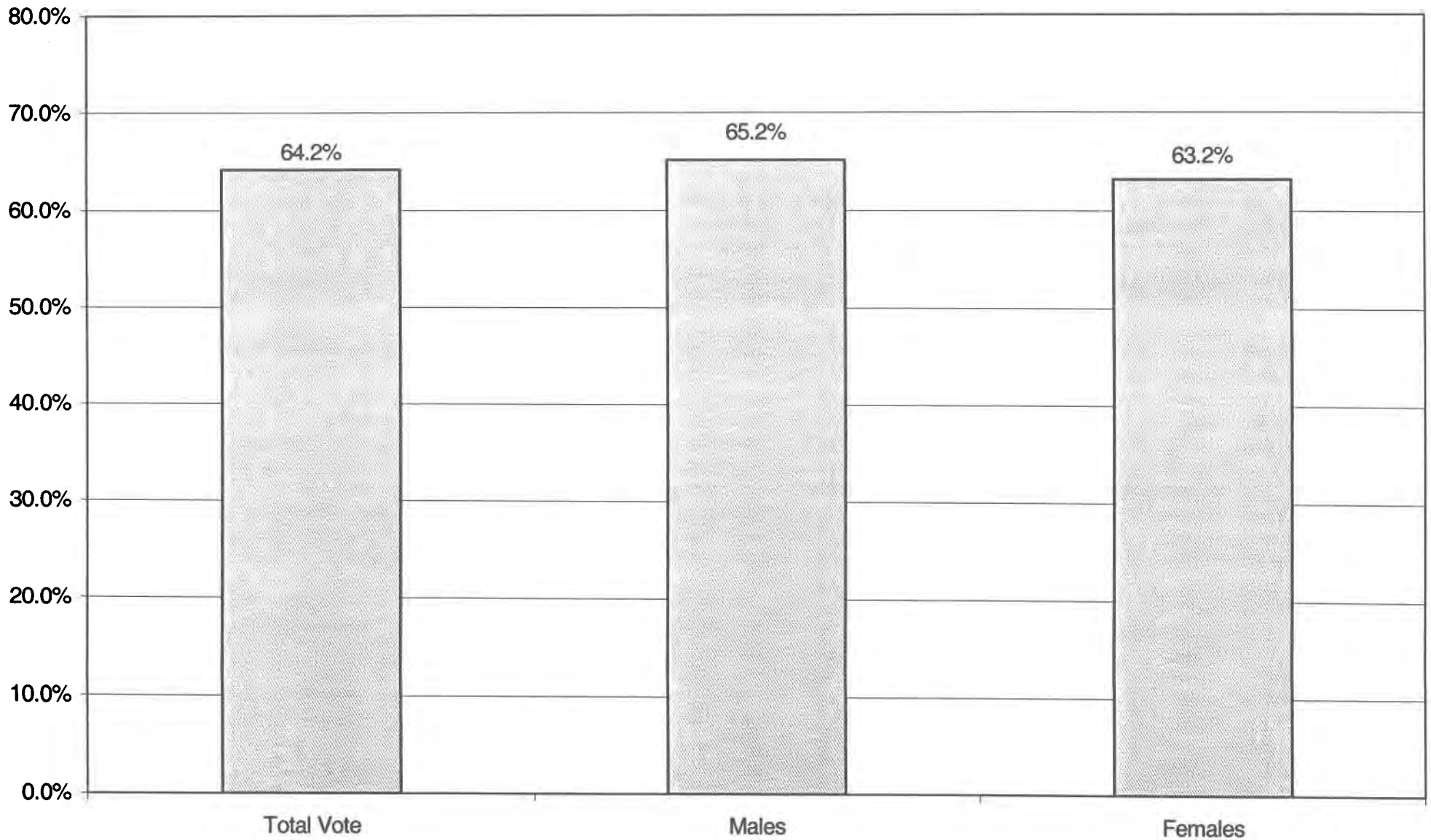
# **REPUBLICAN SUMMARY**

2003 GENERAL ELECTION  
REPUBLICAN TURNOUT BY GENDER

LT/LD SUMMARY

LEGISLATIVE DISTRICT OR TOWN	TOTAL VOTERS			MALES			FEMALES		
	VOTED	REGISTERED	TURNOUT	VOTED	REGISTERED	TURNOUT	VOTED	REGISTERED	TURNOUT
<b>CITY</b>									
Leg. Dist. 06	624	989	63.09 %	304	483	62.94 %	320	506	63.24 %
Leg. Dist. 07	309	497	62.17 %	142	231	61.47 %	167	266	62.78 %
Leg. Dist. 21	1,204	2,151	55.97 %	592	1,025	57.76 %	612	1,126	54.35 %
Leg. Dist. 22	246	691	35.60 %	120	332	36.14 %	126	359	35.10 %
Leg. Dist. 23	1,555	2,632	59.08 %	850	1,407	60.41 %	705	1,225	57.55 %
Leg. Dist. 24	896	1,485	60.34 %	432	704	61.36 %	464	781	59.41 %
Leg. Dist. 25	450	925	48.65 %	230	479	48.02 %	220	446	49.33 %
Leg. Dist. 26	998	1,731	57.65 %	484	846	57.21 %	514	885	58.08 %
Leg. Dist. 27	772	1,336	57.78 %	372	653	56.97 %	400	683	58.57 %
Leg. Dist. 28	832	1,709	48.68 %	431	834	51.68 %	401	875	45.83 %
Leg. Dist. 29	798	1,613	49.47 %	391	778	50.26 %	407	835	48.74 %
<b>TOTAL:</b>	<b>8,684</b>	<b>15,759</b>	<b>55.11 %</b>	<b>4,348</b>	<b>7,772</b>	<b>55.94 %</b>	<b>4,336</b>	<b>7,987</b>	<b>54.29 %</b>
<b>TOWNS</b>									
Brighton	4,682	6,946	67.41 %	2,332	3,326	70.11 %	2,350	3,620	64.92 %
Chili	4,724	7,064	66.87 %	2,382	3,538	67.33 %	2,342	3,526	66.42 %
Clarkson	992	1,545	64.21 %	524	792	66.16 %	468	753	62.15 %
East Rochester	893	1,424	62.71 %	424	672	63.10 %	469	752	62.37 %
Gates	4,139	6,573	62.97 %	2,062	3,264	63.17 %	2,077	3,309	62.77 %
Greece	14,873	23,942	62.12 %	7,522	11,884	63.30 %	7,351	12,058	60.96 %
Hamlin	1,627	2,369	68.68 %	831	1,224	67.89 %	796	1,145	69.52 %
Henrietta	4,564	7,062	64.63 %	2,361	3,614	65.33 %	2,203	3,448	63.89 %
Irondequoit	8,113	12,332	65.79 %	3,994	5,964	66.97 %	4,119	6,368	64.68 %
Mendon	1,777	2,718	65.38 %	945	1,426	66.27 %	832	1,292	64.40 %
Ogden	3,262	4,996	65.29 %	1,690	2,543	66.46 %	1,572	2,453	64.08 %
Parma	2,555	3,946	64.75 %	1,350	2,056	65.66 %	1,205	1,890	63.76 %
Penfield	6,247	9,283	67.30 %	3,246	4,749	68.35 %	3,001	4,534	66.19 %
Perinton	8,762	13,258	66.09 %	4,541	6,732	67.45 %	4,221	6,526	64.68 %
Pittsford	5,437	8,044	67.59 %	2,805	4,128	67.95 %	2,632	3,916	67.21 %
Riga	1,107	1,716	64.51 %	554	842	65.80 %	553	874	63.27 %
Rush	726	1,038	69.94 %	379	546	69.41 %	347	492	70.53 %
Sweden	1,692	2,554	66.25 %	837	1,269	65.96 %	855	1,285	66.54 %
Webster	6,509	9,751	66.75 %	3,367	4,965	67.81 %	3,142	4,786	65.65 %
Wheatland	860	1,324	64.95 %	423	645	65.58 %	437	679	64.36 %
<b>TOTAL:</b>	<b>83,541</b>	<b>127,885</b>	<b>65.33 %</b>	<b>42,569</b>	<b>64,179</b>	<b>66.33 %</b>	<b>40,972</b>	<b>63,706</b>	<b>64.31 %</b>
<b>GRAND TOTAL:</b>	<b>92,225</b>	<b>143,644</b>	<b>64.20 %</b>	<b>46,917</b>	<b>71,951</b>	<b>65.21 %</b>	<b>45,308</b>	<b>71,693</b>	<b>63.20 %</b>

# REPUBLICAN TURNOUT - TOTAL AND GENDER 2003 GENERAL ELECTION





2003 GENERAL ELECTION  
REPUBLICAN TURNOUT BY AGE

LT/LD SUMMARY  
Part 1 of 2

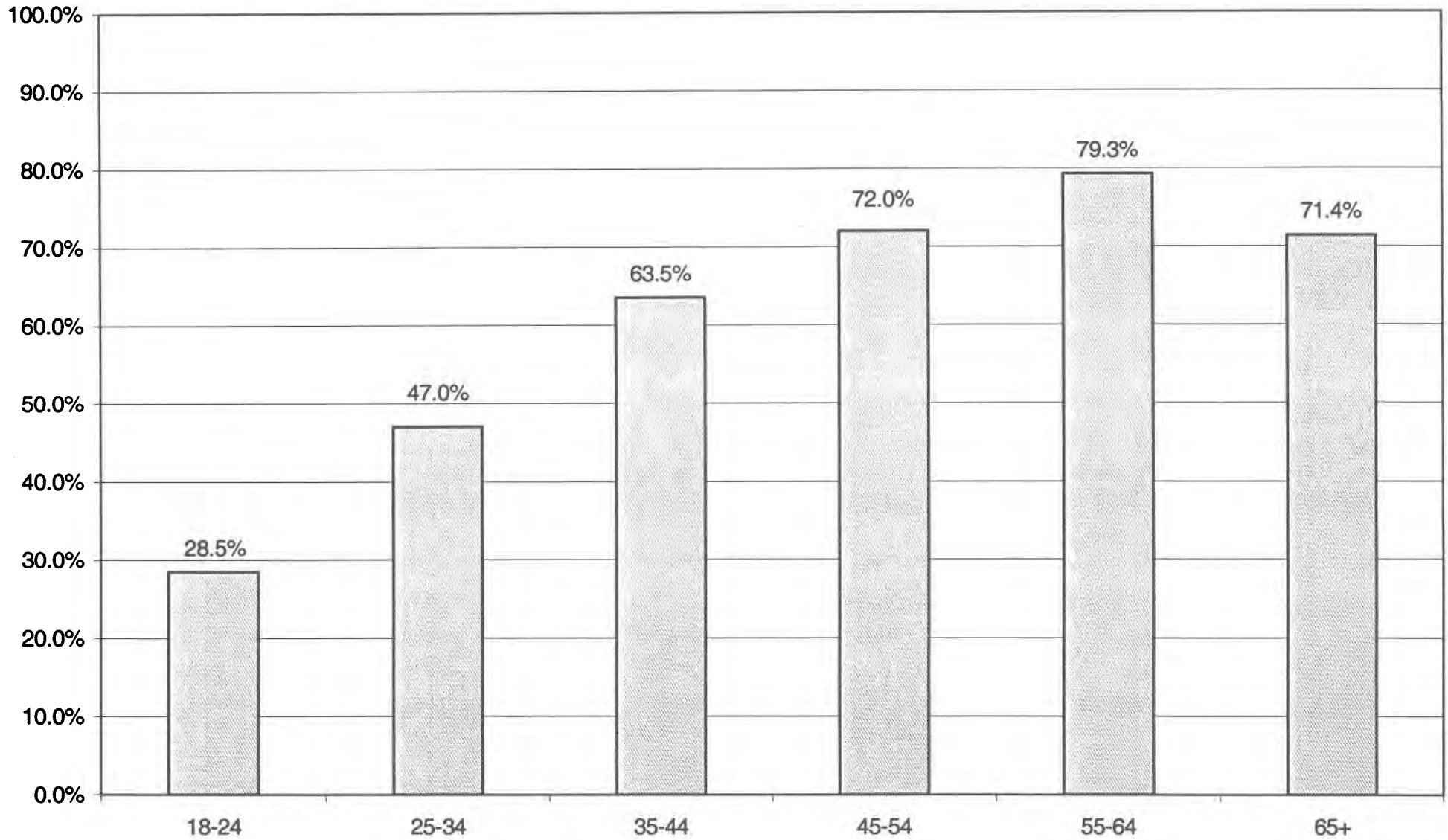
LEGISLATIVE DISTRICT OR TOWN CITY	NDOB			18-24			25-34			35-44		
	VOTED	REGISTERED	TURNOUT	VOTED	REGISTERED	TURNOUT	VOTED	REGISTERED	TURNOUT	VOTED	REGISTERED	TURNOUT
Leg. Dist. 06	46	65	70.77 %	27	80	33.75 %	91	180	50.56 %	106	176	60.23 %
Leg. Dist. 07	23	33	69.70 %	4	22	18.18 %	22	61	36.07 %	53	89	59.55 %
Leg. Dist. 21	174	258	67.44 %	72	226	31.86 %	171	393	43.51 %	200	373	53.62 %
Leg. Dist. 22	22	37	59.46 %	7	70	10.00 %	25	132	18.94 %	58	160	36.25 %
Leg. Dist. 23	138	189	73.02 %	119	393	30.28 %	289	617	46.84 %	311	467	66.60 %
Leg. Dist. 24	69	94	73.40 %	51	148	34.46 %	133	257	51.75 %	155	253	61.26 %
Leg. Dist. 25	28	41	68.29 %	35	125	28.00 %	56	168	33.33 %	72	147	48.98 %
Leg. Dist. 26	85	122	69.67 %	37	126	29.37 %	136	323	42.11 %	239	403	59.31 %
Leg. Dist. 27	72	113	63.72 %	56	148	37.84 %	74	191	38.74 %	168	277	60.65 %
Leg. Dist. 28	72	124	58.06 %	35	143	24.48 %	102	300	34.00 %	148	315	46.98 %
Leg. Dist. 29	88	155	56.77 %	28	106	26.42 %	67	254	26.38 %	129	292	44.18 %
<b>TOTAL:</b>	<b>817</b>	<b>1,231</b>	<b>66.37 %</b>	<b>471</b>	<b>1,587</b>	<b>29.68 %</b>	<b>1,166</b>	<b>2,876</b>	<b>40.54 %</b>	<b>1,639</b>	<b>2,952</b>	<b>55.52 %</b>
<b>TOWNS</b>												
Brighton	329	464	70.91 %	156	462	33.77 %	490	963	50.88 %	742	1,113	66.67 %
Chili	291	378	76.98 %	167	544	30.70 %	580	1,168	49.66 %	1,035	1,534	67.47 %
Clarkson	1	3	33.33 %	26	98	26.53 %	166	304	54.61 %	232	376	61.70 %
East Rochester	90	114	78.95 %	32	107	29.91 %	127	254	50.00 %	195	303	64.36 %
Gates	107	151	70.86 %	119	415	28.67 %	419	994	42.15 %	684	1,188	57.58 %
Greece	852	1,192	71.48 %	411	1,646	24.97 %	1,407	3,309	42.52 %	2,911	4,873	59.74 %
Hamlin	22	24	91.67 %	66	200	33.00 %	184	382	48.17 %	412	602	68.44 %
Henrietta	65	84	77.38 %	169	537	31.47 %	582	1,216	47.86 %	962	1,518	63.37 %
Irondequoit	568	853	66.59 %	205	658	31.16 %	831	1,719	48.34 %	1,427	2,175	65.61 %
Mendon	10	19	52.63 %	33	182	18.13 %	194	406	47.78 %	493	735	67.07 %
Ogden	99	130	76.15 %	129	445	28.99 %	385	762	50.52 %	860	1,287	66.82 %
Parma	27	47	57.45 %	87	268	32.46 %	272	547	49.73 %	635	983	64.60 %
Penfield	264	347	76.08 %	157	503	31.21 %	710	1,371	51.79 %	1,495	2,259	66.18 %
Perinton	64	91	70.33 %	213	766	27.81 %	999	2,021	49.43 %	2,010	3,125	64.32 %
Pittsford	139	184	75.54 %	74	405	18.27 %	478	981	48.73 %	1,174	1,827	64.26 %
Riga	13	25	52.00 %	32	111	28.83 %	135	267	50.56 %	270	434	62.21 %
Rush	39	46	84.78 %	6	52	11.54 %	56	113	49.56 %	180	252	71.43 %
Sweden	32	42	76.19 %	64	232	27.59 %	202	402	50.25 %	381	551	69.15 %
Webster	205	270	75.93 %	179	600	29.83 %	770	1,541	49.97 %	1,584	2,348	67.46 %
Wheatland	12	16	75.00 %	34	126	26.98 %	81	184	44.02 %	185	286	64.69 %
<b>TOTAL:</b>	<b>3,229</b>	<b>4,480</b>	<b>72.08 %</b>	<b>2,359</b>	<b>8,357</b>	<b>28.23 %</b>	<b>9,068</b>	<b>18,904</b>	<b>47.97 %</b>	<b>17,867</b>	<b>27,769</b>	<b>64.34 %</b>
<b>GRAND TOTAL:</b>	<b>4,046</b>	<b>5,711</b>	<b>70.85 %</b>	<b>2,830</b>	<b>9,944</b>	<b>28.46 %</b>	<b>10,234</b>	<b>21,780</b>	<b>46.99 %</b>	<b>19,506</b>	<b>30,721</b>	<b>63.49 %</b>

2003 GENERAL ELECTION  
REPUBLICAN TURNOUT BY AGE

LT/LD SUMMARY  
Part 2 of 2

LEGISLATIVE DISTRICT OR TOWN	45-54			55-64			65+		
	VOTED	REGISTERED	TURNOUT	VOTED	REGISTERED	TURNOUT	VOTED	REGISTERED	TURNOUT
<b>CITY</b>									
Leg. Dist. 06	112	153	73.20 %	89	118	75.42 %	153	217	70.51 %
Leg. Dist. 07	57	84	67.86 %	44	59	74.58 %	106	149	71.14 %
Leg. Dist. 21	212	303	69.97 %	130	186	69.89 %	245	412	59.47 %
Leg. Dist. 22	50	115	43.48 %	36	81	44.44 %	48	96	50.00 %
Leg. Dist. 23	290	401	72.32 %	211	266	79.32 %	197	299	65.89 %
Leg. Dist. 24	141	208	67.79 %	111	153	72.55 %	236	372	63.44 %
Leg. Dist. 25	85	156	54.49 %	59	96	61.46 %	115	192	59.90 %
Leg. Dist. 26	177	265	66.79 %	135	185	72.97 %	189	307	61.56 %
Leg. Dist. 27	151	232	65.09 %	110	151	72.85 %	141	224	62.95 %
Leg. Dist. 28	176	315	55.87 %	126	201	62.69 %	173	311	55.63 %
Leg. Dist. 29	138	260	53.08 %	118	183	64.48 %	230	363	63.36 %
<b>TOTAL:</b>	<b>1,589</b>	<b>2,492</b>	<b>63.76 %</b>	<b>1,169</b>	<b>1,679</b>	<b>69.62 %</b>	<b>1,833</b>	<b>2,942</b>	<b>62.30 %</b>
<b>TOWNS</b>									
Brighton	841	1,121	75.02 %	724	905	80.00 %	1,400	1,918	72.99 %
Chili	945	1,245	75.90 %	763	940	81.17 %	943	1,255	75.14 %
Clarkson	208	289	71.97 %	170	204	83.33 %	189	271	69.74 %
East Rochester	147	229	64.19 %	116	152	76.32 %	186	265	70.19 %
Gates	748	1,062	70.43 %	805	1,010	79.70 %	1,257	1,753	71.71 %
Greece	2,941	4,188	70.22 %	2,518	3,194	78.84 %	3,833	5,540	69.19 %
Hamlin	423	530	79.81 %	298	348	85.63 %	222	283	78.45 %
Henrietta	895	1,269	70.53 %	850	1,073	79.22 %	1,041	1,365	76.26 %
Irondequoit	1,450	1,944	74.59 %	1,199	1,524	78.67 %	2,433	3,459	70.34 %
Mendon	407	549	74.13 %	336	402	83.58 %	304	425	71.53 %
Ogden	723	986	73.33 %	537	674	79.67 %	529	712	74.30 %
Parma	554	790	70.13 %	537	652	82.36 %	443	659	67.22 %
Penfield	1,228	1,694	72.49 %	1,053	1,297	81.19 %	1,340	1,812	73.95 %
Perinton	1,944	2,649	73.39 %	1,755	2,195	79.95 %	1,777	2,411	73.70 %
Pittsford	1,121	1,531	73.22 %	1,031	1,253	82.28 %	1,420	1,863	76.22 %
Riga	281	371	75.74 %	197	251	78.49 %	179	257	69.65 %
Rush	144	202	71.29 %	140	169	82.84 %	161	204	78.92 %
Sweden	415	542	76.57 %	280	350	80.00 %	318	435	73.10 %
Webster	1,325	1,777	74.56 %	1,075	1,362	78.93 %	1,371	1,853	73.99 %
Wheatland	189	256	73.83 %	155	185	83.78 %	204	271	75.28 %
<b>TOTAL:</b>	<b>16,929</b>	<b>23,224</b>	<b>72.89 %</b>	<b>14,539</b>	<b>18,140</b>	<b>80.15 %</b>	<b>19,550</b>	<b>27,011</b>	<b>72.38 %</b>
<b>GRAND TOTAL:</b>	<b>18,518</b>	<b>25,716</b>	<b>72.01 %</b>	<b>15,708</b>	<b>19,819</b>	<b>79.26 %</b>	<b>21,383</b>	<b>29,953</b>	<b>71.39 %</b>

# REPUBLICAN TURNOUT BY AGE GROUP 2003 GENERAL ELECTION



# **DEMOCRATIC SUMMARY**

2003 GENERAL ELECTION  
DEMOCRATIC TURNOUT BY GENDER

LT/LD SUMMARY

LEGISLATIVE DISTRICT OR TOWN	TOTAL VOTERS			MALES			FEMALES		
	VOTED	REGISTERED	TURNOUT	VOTED	REGISTERED	TURNOUT	VOTED	REGISTERED	TURNOUT
<b>CITY</b>									
Leg. Dist. 06	584	1,031	56.64 %	224	386	58.03 %	360	645	55.81 %
Leg. Dist. 07	351	578	60.73 %	126	214	58.88 %	225	364	61.81 %
Leg. Dist. 21	3,316	6,446	51.44 %	1,274	2,472	51.54 %	2,042	3,974	51.38 %
Leg. Dist. 22	2,443	6,345	38.50 %	823	2,448	33.62 %	1,620	3,897	41.57 %
Leg. Dist. 23	3,211	5,231	61.38 %	1,376	2,213	62.18 %	1,835	3,018	60.80 %
Leg. Dist. 24	2,042	3,225	63.32 %	823	1,320	62.35 %	1,219	1,905	63.99 %
Leg. Dist. 25	3,153	6,470	48.73 %	1,211	2,645	45.78 %	1,942	3,825	50.77 %
Leg. Dist. 26	1,636	3,101	52.76 %	658	1,211	54.34 %	978	1,890	51.75 %
Leg. Dist. 27	4,611	8,530	54.06 %	1,676	3,331	50.32 %	2,935	5,199	56.45 %
Leg. Dist. 28	1,935	4,530	42.72 %	739	1,694	43.62 %	1,196	2,836	42.17 %
Leg. Dist. 29	2,687	5,982	44.92 %	957	2,224	43.03 %	1,730	3,758	46.04 %
<b>TOTAL:</b>	<b>25,969</b>	<b>51,469</b>	<b>50.46 %</b>	<b>9,887</b>	<b>20,158</b>	<b>49.05 %</b>	<b>16,082</b>	<b>31,311</b>	<b>51.36 %</b>
<b>TOWNS</b>									
Brighton	5,685	8,411	67.59 %	2,208	3,256	67.81 %	3,477	5,155	67.45 %
Chili	2,919	4,979	58.63 %	1,170	1,978	59.15 %	1,749	3,001	58.28 %
Clarkson	450	865	52.02 %	184	323	56.97 %	266	542	49.08 %
East Rochester	589	1,059	55.62 %	219	384	57.03 %	370	675	54.81 %
Gates	2,974	5,668	52.47 %	1,175	2,232	52.64 %	1,799	3,436	52.36 %
Greece	8,279	16,087	51.46 %	3,223	6,187	52.09 %	5,056	9,900	51.07 %
Hamlin	588	1,098	53.55 %	239	450	53.11 %	349	648	53.86 %
Henrietta	3,448	5,991	57.55 %	1,373	2,366	58.03 %	2,075	3,625	57.24 %
Irondequoit	6,726	11,164	60.25 %	2,587	4,169	62.05 %	4,139	6,995	59.17 %
Mendon	852	1,431	59.54 %	343	557	61.58 %	509	874	58.24 %
Ogden	1,507	2,710	55.61 %	583	1,063	54.84 %	924	1,647	56.10 %
Parma	1,118	2,037	54.88 %	443	804	55.10 %	675	1,233	54.74 %
Penfield	3,773	6,213	60.73 %	1,496	2,404	62.23 %	2,277	3,809	59.78 %
Perinton	4,907	8,265	59.37 %	1,915	3,147	60.85 %	2,992	5,118	58.46 %
Pittsford	2,965	4,736	62.61 %	1,149	1,805	63.66 %	1,816	2,931	61.96 %
Riga	443	772	57.38 %	167	308	54.22 %	276	464	59.48 %
Rush	359	601	59.73 %	154	243	63.37 %	205	358	57.26 %
Sweden	1,001	1,704	58.74 %	433	690	62.75 %	568	1,014	56.02 %
Webster	4,114	7,012	58.67 %	1,633	2,723	59.97 %	2,481	4,289	57.85 %
Wheatland	515	859	59.95 %	220	356	61.80 %	295	503	58.65 %
<b>TOTAL:</b>	<b>53,212</b>	<b>91,662</b>	<b>58.05 %</b>	<b>20,914</b>	<b>35,445</b>	<b>59.00 %</b>	<b>32,298</b>	<b>56,217</b>	<b>57.45 %</b>
<b>GRAND TOTAL:</b>	<b>79,181</b>	<b>143,131</b>	<b>55.32 %</b>	<b>30,801</b>	<b>55,603</b>	<b>55.39 %</b>	<b>48,380</b>	<b>87,528</b>	<b>55.27 %</b>

2003 GENERAL ELECTION  
DEMOCRATIC TURNOUT BY AGE

LT/LD SUMMARY  
Part 1 of 2

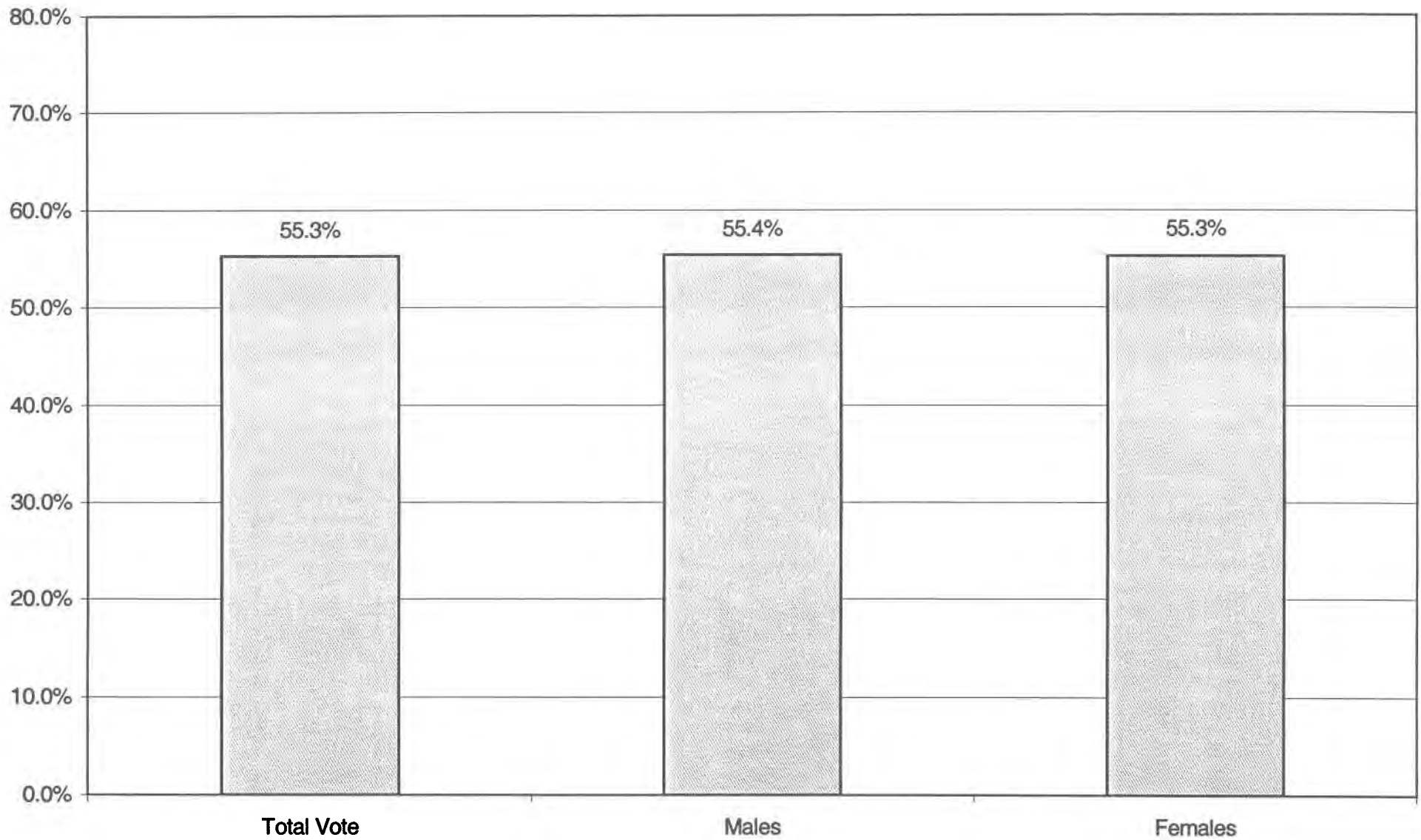
LEGISLATIVE DISTRICT OR TOWN	NDOB			18-24			25-34			35-44		
	VOTED	REGISTERED	TURNOUT	VOTED	REGISTERED	TURNOUT	VOTED	REGISTERED	TURNOUT	VOTED	REGISTERED	TURNOUT
<b>CITY</b>												
Leg. Dist. 06	21	28	75.00 %	16	105	15.24 %	74	185	40.00 %	139	232	59.91 %
Leg. Dist. 07	10	15	66.67 %	10	39	25.64 %	28	75	37.33 %	56	99	56.57 %
Leg. Dist. 21	129	174	74.14 %	212	800	26.50 %	591	1,461	40.45 %	762	1,465	52.01 %
Leg. Dist. 22	44	77	57.14 %	165	873	18.90 %	357	1,340	26.64 %	590	1,491	39.57 %
Leg. Dist. 23	92	119	77.31 %	263	814	32.31 %	568	1,202	47.25 %	662	968	68.39 %
Leg. Dist. 24	56	74	75.68 %	127	349	36.39 %	325	630	51.59 %	440	688	63.95 %
Leg. Dist. 25	64	89	71.91 %	223	858	25.99 %	444	1,262	35.18 %	677	1,433	47.24 %
Leg. Dist. 26	49	62	79.03 %	106	425	24.94 %	305	714	42.72 %	343	667	51.42 %
Leg. Dist. 27	87	117	74.36 %	263	1,017	25.86 %	789	1,807	43.66 %	1,133	2,086	54.31 %
Leg. Dist. 28	59	96	61.46 %	112	627	17.86 %	289	919	31.45 %	433	1,033	41.92 %
Leg. Dist. 29	93	155	60.00 %	174	799	21.78 %	364	1,172	31.06 %	589	1,320	44.62 %
<b>TOTAL:</b>	<b>704</b>	<b>1,006</b>	<b>69.98 %</b>	<b>1,671</b>	<b>6,706</b>	<b>24.92 %</b>	<b>4,134</b>	<b>10,767</b>	<b>38.40 %</b>	<b>5,824</b>	<b>11,482</b>	<b>44.62 %</b>
<b>TOWNS</b>												
Brighton	105	140	75.00 %	213	770	27.66 %	611	1,270	48.11 %	1,212	1,698	71.38 %
Chili	124	157	78.98 %	149	592	25.17 %	334	846	39.48 %	624	1,047	59.60 %
Clarkson	2	5	40.00 %	15	91	16.48 %	53	143	37.06 %	106	200	53.00 %
East Rochester	37	57	64.91 %	35	116	30.17 %	87	202	43.07 %	137	229	59.83 %
Gates	50	68	73.53 %	110	525	20.95 %	285	892	31.95 %	558	1,073	52.00 %
Greece	303	408	74.26 %	321	1,740	18.45 %	800	2,518	31.77 %	1,727	3,360	51.40 %
Hamlin	4	7	57.14 %	30	141	21.28 %	76	187	40.64 %	156	287	54.36 %
Henrietta	29	37	78.38 %	154	582	26.46 %	436	1,123	38.82 %	781	1,299	60.12 %
Irondequoit	248	353	70.25 %	209	826	25.30 %	747	1,707	43.76 %	1,323	2,229	59.35 %
Mendon	2	2	100.00 %	25	145	17.24 %	92	240	38.33 %	255	376	67.82 %
Ogden	34	45	75.56 %	66	294	22.45 %	164	423	38.77 %	376	674	55.79 %
Parma	10	13	76.92 %	37	194	19.07 %	139	360	38.61 %	296	519	57.03 %
Penfield	84	118	71.19 %	123	502	24.50 %	371	895	41.45 %	851	1,371	62.07 %
Perinton	21	31	67.74 %	181	806	22.46 %	550	1,326	41.48 %	1,133	1,856	61.05 %
Pittsford	28	39	71.79 %	60	365	16.44 %	266	638	41.69 %	700	1,088	64.34 %
Riga	5	6	83.33 %	14	94	14.89 %	44	110	40.00 %	135	209	64.59 %
Rush	9	14	64.29 %	10	47	21.28 %	39	83	46.99 %	80	146	54.79 %
Sweden	12	21	57.14 %	46	212	21.70 %	92	255	36.08 %	220	357	61.62 %
Webster	109	153	71.24 %	130	607	21.42 %	465	1,155	40.26 %	882	1,492	59.12 %
Wheatland	3	7	42.86 %	24	92	26.09 %	50	122	40.98 %	103	182	56.59 %
<b>TOTAL:</b>	<b>1,219</b>	<b>1,681</b>	<b>72.52 %</b>	<b>1,952</b>	<b>8,741</b>	<b>22.33 %</b>	<b>5,701</b>	<b>14,495</b>	<b>39.33 %</b>	<b>11,655</b>	<b>19,692</b>	<b>56.59 %</b>
<b>GRAND TOTAL:</b>	<b>1,923</b>	<b>2,687</b>	<b>71.57 %</b>	<b>3,623</b>	<b>15,447</b>	<b>23.45 %</b>	<b>9,835</b>	<b>25,262</b>	<b>38.93 %</b>	<b>17,479</b>	<b>31,174</b>	<b>56.07 %</b>

2003 GENERAL ELECTION  
DEMOCRATIC TURNOUT BY AGE

LT/LD SUMMARY  
Part 2 of 2

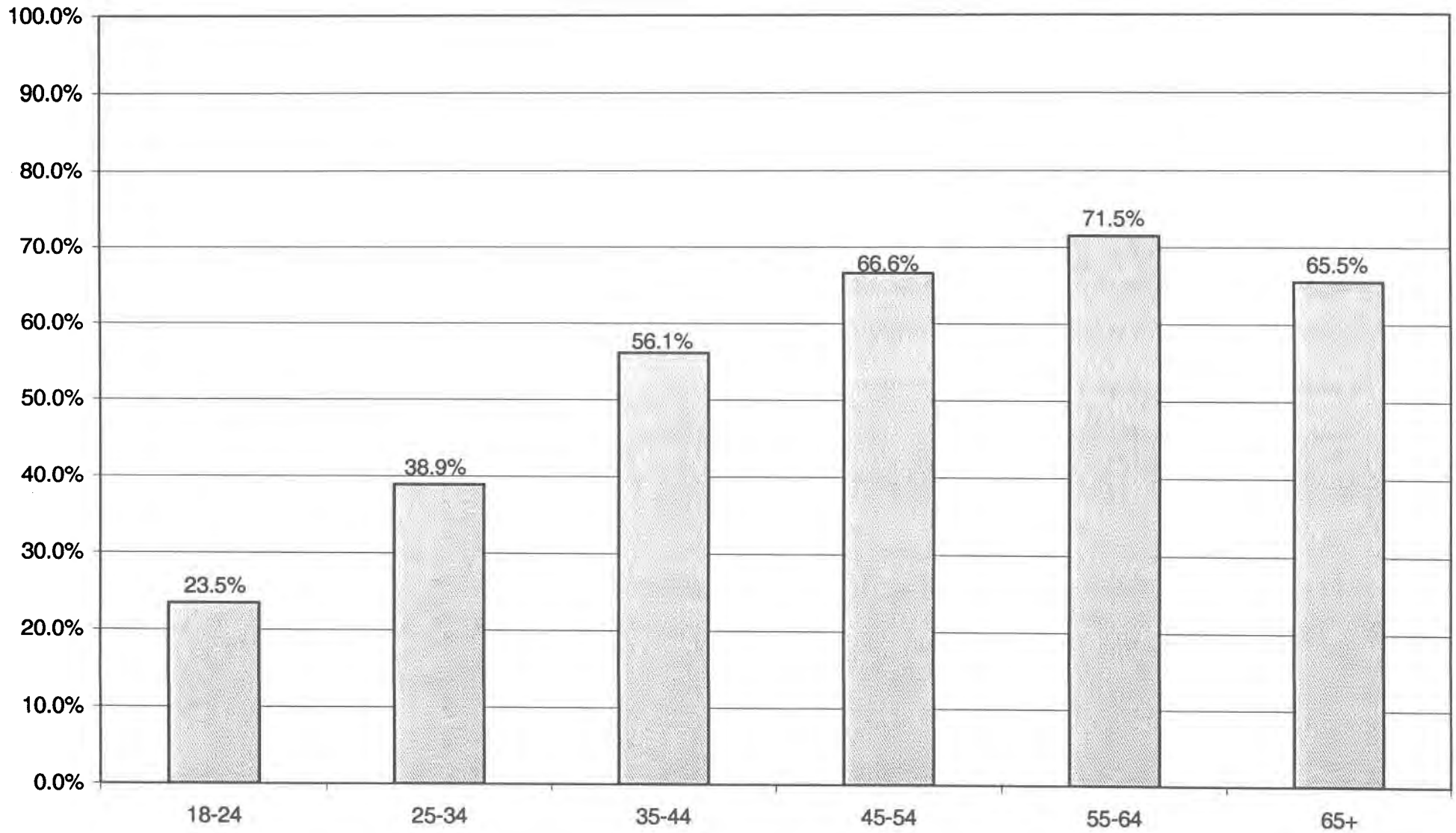
LEGISLATIVE DISTRICT OR TOWN	45-54			55-64			65+		
	VOTED	REGISTERED	TURNOUT	VOTED	REGISTERED	TURNOUT	VOTED	REGISTERED	TURNOUT
<b>CITY</b>									
Leg. Dist. 06	131	201	65.17 %	89	110	80.91 %	114	170	67.06 %
Leg. Dist. 07	107	135	79.26 %	59	87	67.82 %	81	128	63.28 %
Leg. Dist. 21	815	1,282	63.57 %	434	667	65.07 %	373	597	62.48 %
Leg. Dist. 22	580	1,237	46.89 %	411	756	54.37 %	296	571	51.84 %
Leg. Dist. 23	799	1,084	73.71 %	524	632	82.91 %	303	412	73.54 %
Leg. Dist. 24	550	724	75.97 %	280	357	78.43 %	264	403	65.51 %
Leg. Dist. 25	679	1,159	58.58 %	535	824	64.93 %	531	845	62.84 %
Leg. Dist. 26	421	626	67.25 %	204	302	67.55 %	208	305	68.20 %
Leg. Dist. 27	1,164	1,705	68.27 %	733	1,098	66.76 %	442	700	63.14 %
Leg. Dist. 28	444	853	52.05 %	302	517	58.41 %	296	485	61.03 %
Leg. Dist. 29	572	1,074	53.26 %	451	731	61.70 %	444	731	60.74 %
<b>TOTAL:</b>	<b>6,262</b>	<b>10,080</b>	<b>62.12 %</b>	<b>4,022</b>	<b>6,081</b>	<b>66.14 %</b>	<b>3,352</b>	<b>5,347</b>	<b>62.69 %</b>
<b>TOWNS</b>									
Brighton	1,572	1,975	79.59 %	826	1,009	81.86 %	1,146	1,549	73.98 %
Chili	726	1,053	68.95 %	501	657	76.26 %	461	627	73.52 %
Clarkson	128	197	64.97 %	84	107	78.50 %	62	122	50.82 %
East Rochester	110	189	58.20 %	73	101	72.28 %	110	165	66.67 %
Gates	662	1,092	60.62 %	562	826	68.04 %	747	1,192	62.67 %
Greece	2,164	3,470	62.36 %	1,346	1,963	68.57 %	1,618	2,628	61.57 %
Hamlin	158	232	68.10 %	105	142	73.94 %	59	102	57.84 %
Henrietta	840	1,245	67.47 %	636	851	74.74 %	572	854	66.98 %
Irondequoit	1,653	2,348	70.40 %	950	1,263	75.22 %	1,596	2,438	65.46 %
Mendon	271	369	73.44 %	124	174	71.26 %	83	125	66.40 %
Ogden	419	619	67.69 %	219	314	69.75 %	229	341	67.16 %
Parma	291	436	66.74 %	187	271	69.00 %	158	244	64.75 %
Penfield	1,069	1,502	71.17 %	639	831	76.90 %	636	994	63.98 %
Perinton	1,449	2,056	70.48 %	893	1,184	75.42 %	680	1,006	67.59 %
Pittsford	892	1,249	71.42 %	521	679	76.73 %	498	678	73.45 %
Riga	110	178	61.80 %	59	84	70.24 %	76	91	83.52 %
Rush	118	162	72.84 %	55	81	67.90 %	48	68	70.59 %
Sweden	292	402	72.64 %	199	241	82.57 %	140	216	64.81 %
Webster	1,032	1,504	68.62 %	758	993	76.33 %	738	1,108	66.61 %
Wheatland	125	187	66.84 %	112	142	78.87 %	98	127	77.17 %
<b>TOTAL:</b>	<b>14,081</b>	<b>20,465</b>	<b>68.81 %</b>	<b>8,849</b>	<b>11,913</b>	<b>74.28 %</b>	<b>9,755</b>	<b>14,675</b>	<b>66.47 %</b>
<b>GRAND TOTAL:</b>	<b>20,343</b>	<b>30,545</b>	<b>66.60 %</b>	<b>12,871</b>	<b>17,994</b>	<b>71.53 %</b>	<b>13,107</b>	<b>20,022</b>	<b>65.46 %</b>

# DEMOCRATIC TURNOUT - TOTAL AND GENDER 2003 GENERAL ELECTION





# DEMOCRATIC TURNOUT BY AGE GROUP 2003 GENERAL ELECTION



# **INDEPENDENCE SUMMARY**

2003 GENERAL ELECTION  
INDEPENDENCE TURNOUT BY GENDER

LT/LD SUMMARY

LEGISLATIVE DISTRICT OR TOWN	TOTAL VOTERS			MALES			FEMALES		
	VOTED	REGISTERED	TURNOUT	VOTED	REGISTERED	TURNOUT	VOTED	REGISTERED	TURNOUT
<b>CITY</b>									
Leg. Dist. 06	46	100	46.00 %	22	51	43.14 %	24	49	48.98 %
Leg. Dist. 07	15	46	32.61 %	7	19	36.84 %	8	27	29.63 %
Leg. Dist. 21	122	313	38.98 %	60	158	37.97 %	62	155	40.00 %
Leg. Dist. 22	26	117	22.22 %	11	55	20.00 %	15	62	24.19 %
Leg. Dist. 23	152	388	39.18 %	86	195	44.10 %	66	193	34.20 %
Leg. Dist. 24	86	203	42.36 %	45	109	41.28 %	41	94	43.62 %
Leg. Dist. 25	58	182	31.87 %	22	82	26.83 %	36	100	36.00 %
Leg. Dist. 26	58	179	32.40 %	21	79	26.58 %	37	100	37.00 %
Leg. Dist. 27	87	239	36.40 %	49	135	36.30 %	38	104	36.54 %
Leg. Dist. 28	65	208	31.25 %	34	104	32.69 %	31	104	29.81 %
Leg. Dist. 29	65	184	35.33 %	40	105	38.10 %	25	79	31.65 %
<b>TOTAL:</b>	<b>780</b>	<b>2,159</b>	<b>36.13 %</b>	<b>397</b>	<b>1,092</b>	<b>36.36 %</b>	<b>383</b>	<b>1,067</b>	<b>35.90 %</b>
<b>TOWNS</b>									
Brighton	209	488	42.83 %	93	234	39.74 %	116	254	45.67 %
Chili	198	445	44.49 %	100	222	45.05 %	98	223	43.95 %
Clarkson	33	113	29.20 %	15	58	25.86 %	18	55	32.73 %
East Rochester	41	107	38.32 %	17	55	30.91 %	24	52	46.15 %
Gates	154	389	39.59 %	85	203	41.87 %	69	186	37.10 %
Greece	532	1,478	35.99 %	274	703	38.98 %	258	775	33.29 %
Hamlin	59	151	39.07 %	32	72	44.44 %	27	79	34.18 %
Henrietta	187	483	38.72 %	94	245	38.37 %	93	238	39.08 %
Irondequoit	379	829	45.72 %	182	394	46.19 %	197	435	45.29 %
Mendon	56	136	41.18 %	27	64	42.19 %	29	72	40.28 %
Ogden	119	257	46.30 %	60	130	46.15 %	59	127	46.46 %
Parma	95	225	42.22 %	52	107	48.60 %	43	118	36.44 %
Penfield	270	618	43.69 %	121	290	41.72 %	149	328	45.43 %
Perinton	335	835	40.12 %	156	381	40.94 %	179	454	39.43 %
Pittsford	145	361	40.17 %	63	157	40.13 %	82	204	40.20 %
Riga	29	92	31.52 %	11	36	30.56 %	18	56	32.14 %
Rush	22	51	43.14 %	6	20	30.00 %	16	31	51.61 %
Sweden	80	196	40.82 %	47	103	45.63 %	33	93	35.48 %
Webster	310	655	47.33 %	149	302	49.34 %	161	353	45.61 %
Wheatland	31	81	38.27 %	17	44	38.64 %	14	37	37.84 %
<b>TOTAL:</b>	<b>3,284</b>	<b>7,990</b>	<b>41.10 %</b>	<b>1,601</b>	<b>3,820</b>	<b>41.91 %</b>	<b>1,683</b>	<b>4,170</b>	<b>40.36 %</b>
<b>GRAND TOTAL:</b>	<b>4,064</b>	<b>10,149</b>	<b>40.04 %</b>	<b>1,998</b>	<b>4,912</b>	<b>40.68 %</b>	<b>2,066</b>	<b>5,237</b>	<b>39.45 %</b>

2003 GENERAL ELECTION  
INDEPENDENCE TURNOUT BY AGE

LT/LD SUMMARY  
Part 1 of 2

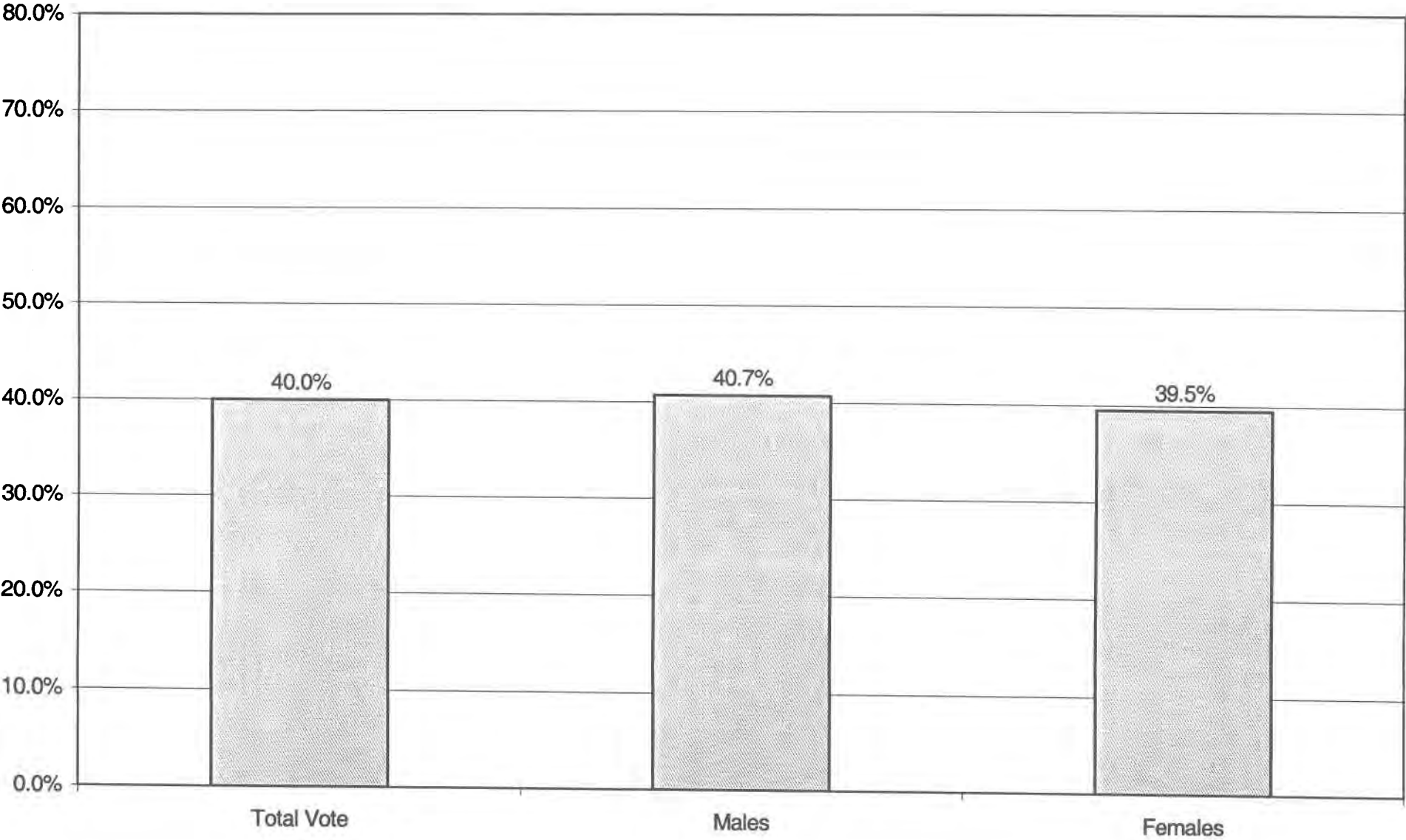
LEGISLATIVE DISTRICT OR TOWN	NDOB			18-24			25-34			35-44		
	VOTED	REGISTERED	TURNOUT	VOTED	REGISTERED	TURNOUT	VOTED	REGISTERED	TURNOUT	VOTED	REGISTERED	TURNOUT
<b>CITY</b>												
Leg. Dist. 06	0	0	0.00 %	4	18	22.22 %	10	28	35.71 %	15	28	53.57 %
Leg. Dist. 07	0	0	0.00 %	2	10	20.00 %	5	8	62.50 %	3	10	30.00 %
Leg. Dist. 21	0	0	0.00 %	18	83	21.69 %	33	93	35.48 %	33	73	45.21 %
Leg. Dist. 22	0	0	0.00 %	5	43	11.63 %	4	27	14.81 %	7	23	30.43 %
Leg. Dist. 23	0	0	0.00 %	29	115	25.22 %	63	151	41.72 %	26	62	41.94 %
Leg. Dist. 24	2	2	100.00 %	11	40	27.50 %	27	70	38.57 %	24	46	52.17 %
Leg. Dist. 25	0	0	0.00 %	8	53	15.09 %	12	43	27.91 %	24	48	50.00 %
Leg. Dist. 26	0	0	0.00 %	10	48	20.83 %	18	46	39.13 %	17	51	33.33 %
Leg. Dist. 27	0	0	0.00 %	19	65	29.23 %	20	65	30.77 %	19	58	32.76 %
Leg. Dist. 28	0	0	0.00 %	13	56	23.21 %	14	56	25.00 %	17	53	32.08 %
Leg. Dist. 29	0	0	0.00 %	13	54	24.07 %	15	43	34.88 %	15	42	35.71 %
<b>TOTAL:</b>	<b>2</b>	<b>2</b>	<b>100.00 %</b>	<b>132</b>	<b>585</b>	<b>22.56 %</b>	<b>221</b>	<b>630</b>	<b>35.08 %</b>	<b>200</b>	<b>494</b>	<b>40.49 %</b>
<b>TOWNS</b>												
Brighton	0	1	0.00 %	24	104	23.08 %	51	138	36.96 %	60	119	50.42 %
Chili	0	0	0.00 %	27	118	22.88 %	51	129	39.53 %	57	97	58.76 %
Clarkson	0	0	0.00 %	4	28	14.29 %	9	30	30.00 %	14	38	36.84 %
East Rochester	0	0	0.00 %	3	16	18.75 %	7	28	25.00 %	18	36	50.00 %
Gates	0	0	0.00 %	15	72	20.83 %	42	108	38.89 %	38	101	37.62 %
Greece	0	0	0.00 %	63	374	16.84 %	101	363	27.82 %	166	376	44.15 %
Hamlin	0	0	0.00 %	6	35	17.14 %	10	41	24.39 %	24	41	58.54 %
Henrietta	0	0	0.00 %	27	106	25.47 %	46	138	33.33 %	43	122	35.25 %
Irondequoit	0	0	0.00 %	43	179	24.02 %	97	215	45.12 %	101	209	48.33 %
Mendon	0	0	0.00 %	4	22	18.18 %	12	32	37.50 %	20	42	47.62 %
Ogden	0	0	0.00 %	14	52	26.92 %	34	76	44.74 %	39	76	51.32 %
Parma	0	0	0.00 %	12	51	23.53 %	25	59	42.37 %	29	64	45.31 %
Penfield	0	0	0.00 %	28	127	22.05 %	52	137	37.96 %	75	158	47.47 %
Perinton	0	0	0.00 %	31	176	17.61 %	78	233	33.48 %	92	193	47.67 %
Pittsford	0	0	0.00 %	6	52	11.54 %	35	92	38.04 %	45	99	45.45 %
Riga	0	0	0.00 %	3	24	12.50 %	4	21	19.05 %	13	26	50.00 %
Rush	0	0	0.00 %	3	11	27.27 %	5	13	38.46 %	6	13	46.15 %
Sweden	0	0	0.00 %	17	58	29.31 %	19	47	40.43 %	23	46	50.00 %
Webster	0	0	0.00 %	38	122	31.15 %	72	185	38.92 %	93	172	54.07 %
Wheatland	0	0	0.00 %	6	25	24.00 %	10	23	43.48 %	9	19	47.37 %
<b>TOTAL:</b>	<b>0</b>	<b>1</b>	<b>0.00 %</b>	<b>374</b>	<b>1,752</b>	<b>21.35 %</b>	<b>760</b>	<b>2,108</b>	<b>36.05 %</b>	<b>965</b>	<b>2,047</b>	<b>47.14 %</b>
<b>GRAND TOTAL:</b>	<b>2</b>	<b>3</b>	<b>66.67 %</b>	<b>506</b>	<b>2,337</b>	<b>21.65 %</b>	<b>981</b>	<b>2,738</b>	<b>35.83 %</b>	<b>1,165</b>	<b>2,541</b>	<b>45.85 %</b>

2003 GENERAL ELECTION  
INDEPENDENCE TURNOUT BY AGE

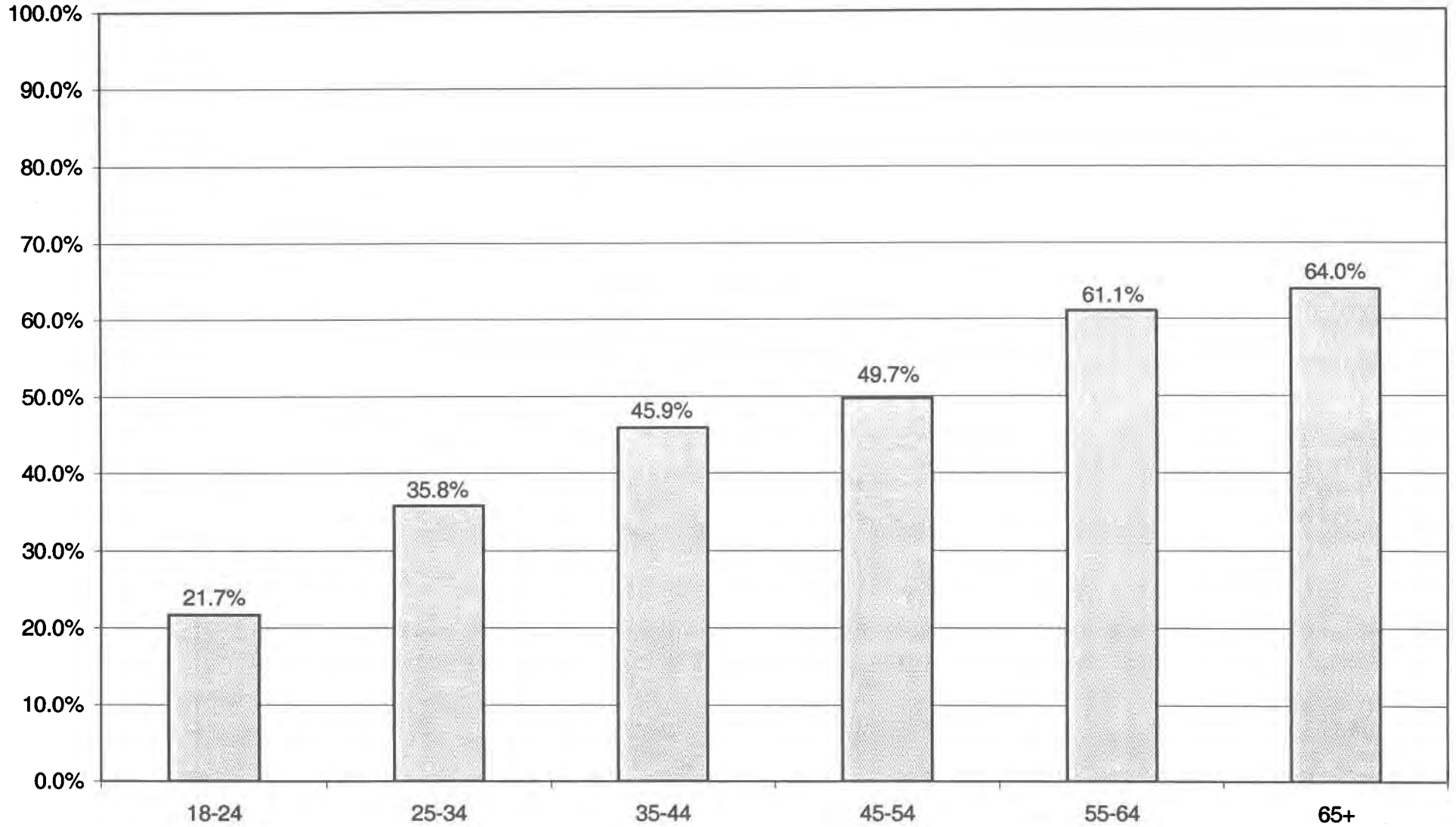
LT/LD SUMMARY  
Part 2 of 2

LEGISLATIVE DISTRICT OR TOWN	45-54			55-64			65+		
	VOTED	REGISTERED	TURNOUT	VOTED	REGISTERED	TURNOUT	VOTED	REGISTERED	TURNOUT
<b>CITY</b>									
Leg. Dist. 06	8	14	57.14 %	4	5	80.00 %	5	7	71.43 %
Leg. Dist. 07	2	10	20.00 %	0	3	0.00 %	3	5	60.00 %
Leg. Dist. 21	16	33	48.48 %	15	20	75.00 %	7	11	63.64 %
Leg. Dist. 22	5	14	35.71 %	2	6	33.33 %	3	4	75.00 %
Leg. Dist. 23	19	36	52.78 %	13	20	65.00 %	2	4	50.00 %
Leg. Dist. 24	10	24	41.67 %	8	11	72.73 %	4	10	40.00 %
Leg. Dist. 25	8	20	40.00 %	3	9	33.33 %	3	9	33.33 %
Leg. Dist. 26	10	23	43.48 %	2	9	22.22 %	1	2	50.00 %
Leg. Dist. 27	20	38	52.63 %	5	7	71.43 %	4	6	66.67 %
Leg. Dist. 28	12	27	44.44 %	4	7	57.14 %	5	9	55.56 %
Leg. Dist. 29	13	23	56.52 %	4	10	40.00 %	5	12	41.67 %
<b>TOTAL:</b>	<b>123</b>	<b>262</b>	<b>46.95 %</b>	<b>60</b>	<b>107</b>	<b>56.07 %</b>	<b>42</b>	<b>79</b>	<b>53.16 %</b>
<b>TOWNS</b>									
Brighton	36	68	52.94 %	11	19	57.89 %	27	39	69.23 %
Chili	30	52	57.69 %	13	20	65.00 %	20	29	68.97 %
Clarkson	3	9	33.33 %	3	4	75.00 %	0	4	0.00 %
East Rochester	6	14	42.86 %	6	9	66.67 %	1	4	25.00 %
Gates	26	55	47.27 %	11	22	50.00 %	22	31	70.97 %
Greece	95	193	49.22 %	51	83	61.45 %	56	89	62.92 %
Hamlin	10	22	45.45 %	6	8	75.00 %	3	4	75.00 %
Henrietta	32	57	56.14 %	21	32	65.63 %	18	28	64.29 %
Irondequoit	63	113	55.75 %	26	47	55.32 %	49	66	74.24 %
Mendon	8	24	33.33 %	8	10	80.00 %	4	6	66.67 %
Ogden	16	32	50.00 %	8	11	72.73 %	8	10	80.00 %
Parma	19	30	63.33 %	6	11	54.55 %	4	10	40.00 %
Penfield	46	89	51.69 %	33	52	63.46 %	36	55	65.45 %
Perinton	63	123	51.22 %	38	56	67.86 %	33	54	61.11 %
Pittsford	23	58	39.66 %	15	26	57.69 %	21	34	61.76 %
Riga	6	15	40.00 %	2	3	66.67 %	1	3	33.33 %
Rush	3	9	33.33 %	4	4	100.00 %	1	1	100.00 %
Sweden	11	25	44.00 %	5	10	50.00 %	5	10	50.00 %
Webster	48	90	53.33 %	27	43	62.79 %	32	43	74.42 %
Wheatland	3	8	37.50 %	0	2	0.00 %	3	4	75.00 %
<b>TOTAL:</b>	<b>547</b>	<b>1,086</b>	<b>50.37 %</b>	<b>294</b>	<b>472</b>	<b>62.29 %</b>	<b>344</b>	<b>524</b>	<b>65.65 %</b>
<b>GRAND TOTAL:</b>	<b>670</b>	<b>1,348</b>	<b>49.70 %</b>	<b>354</b>	<b>579</b>	<b>61.14 %</b>	<b>386</b>	<b>603</b>	<b>64.01 %</b>

# INDEPENDENCE TURNOUT - TOTAL AND GENDER 2003 GENERAL ELECTION



# INDEPENDENCE TURNOUT BY AGE GROUP 2003 GENERAL ELECTION



# **CONSERVATIVE SUMMARY**



2003 GENERAL ELECTION  
CONSERVATIVE TURNOUT BY GENDER

LT/LD SUMMARY

LEGISLATIVE DISTRICT OR TOWN	TOTAL VOTERS			MALES			FEMALES		
	VOTED	REGISTERED	TURNOUT	VOTED	REGISTERED	TURNOUT	VOTED	REGISTERED	TURNOUT
<b>CITY</b>									
Leg. Dist. 06	54	96	56.25 %	26	49	53.06 %	28	47	59.57 %
Leg. Dist. 07	19	30	63.33 %	13	16	81.25 %	6	14	42.86 %
Leg. Dist. 21	69	122	56.56 %	36	72	50.00 %	33	50	66.00 %
Leg. Dist. 22	18	43	41.86 %	11	25	44.00 %	7	18	38.89 %
Leg. Dist. 23	56	108	51.85 %	31	56	55.36 %	25	52	48.08 %
Leg. Dist. 24	49	86	56.98 %	30	55	54.55 %	19	31	61.29 %
Leg. Dist. 25	30	56	53.57 %	18	33	54.55 %	12	23	52.17 %
Leg. Dist. 26	82	148	55.41 %	44	80	55.00 %	38	68	55.88 %
Leg. Dist. 27	51	91	56.04 %	30	53	56.60 %	21	38	55.26 %
Leg. Dist. 28	75	141	53.19 %	46	80	57.50 %	29	61	47.54 %
Leg. Dist. 29	47	105	44.76 %	33	63	52.38 %	14	42	33.33 %
<b>TOTAL:</b>	<b>550</b>	<b>1,026</b>	<b>53.61 %</b>	<b>318</b>	<b>582</b>	<b>54.64 %</b>	<b>232</b>	<b>444</b>	<b>52.25 %</b>
<b>TOWNS</b>									
Brighton	124	204	60.78 %	80	120	66.67 %	44	84	52.38 %
Chili	315	463	68.03 %	188	271	69.37 %	127	192	66.15 %
Clarkson	57	103	55.34 %	39	66	59.09 %	18	37	48.65 %
East Rochester	47	71	66.20 %	30	41	73.17 %	17	30	56.67 %
Gates	228	384	59.38 %	123	211	58.29 %	105	173	60.69 %
Greece	822	1,567	52.46 %	455	851	53.47 %	367	716	51.26 %
Hamlin	82	137	59.85 %	54	78	69.23 %	28	59	47.46 %
Henrietta	319	530	60.19 %	180	287	62.72 %	139	243	57.20 %
Irondequoit	457	728	62.77 %	272	409	66.50 %	185	319	57.99 %
Mendon	67	99	67.68 %	41	62	66.13 %	26	37	70.27 %
Ogden	226	352	64.20 %	117	181	64.64 %	109	171	63.74 %
Parma	151	240	62.92 %	95	139	68.35 %	56	101	55.45 %
Penfield	248	391	63.43 %	148	230	64.35 %	100	161	62.11 %
Perinton	279	461	60.52 %	171	282	60.64 %	108	179	60.34 %
Pittsford	130	197	65.99 %	87	123	70.73 %	43	74	58.11 %
Riga	52	81	64.20 %	32	51	62.75 %	20	30	66.67 %
Rush	36	51	70.59 %	22	30	73.33 %	14	21	66.67 %
Sweden	65	123	52.85 %	40	72	55.56 %	25	51	49.02 %
Webster	346	537	64.43 %	210	317	66.25 %	136	220	61.82 %
Wheatland	42	70	60.00 %	27	45	60.00 %	15	25	60.00 %
<b>TOTAL:</b>	<b>4,093</b>	<b>6,789</b>	<b>60.29 %</b>	<b>2,411</b>	<b>3,866</b>	<b>62.36 %</b>	<b>1,682</b>	<b>2,923</b>	<b>57.54 %</b>
<b>GRAND TOTAL:</b>	<b>4,643</b>	<b>7,815</b>	<b>59.41 %</b>	<b>2,729</b>	<b>4,448</b>	<b>61.35 %</b>	<b>1,914</b>	<b>3,367</b>	<b>56.85 %</b>

2003 GENERAL ELECTION  
CONSERVATIVE TURNOUT BY AGE

LT/LD SUMMARY  
Part 1 of 2

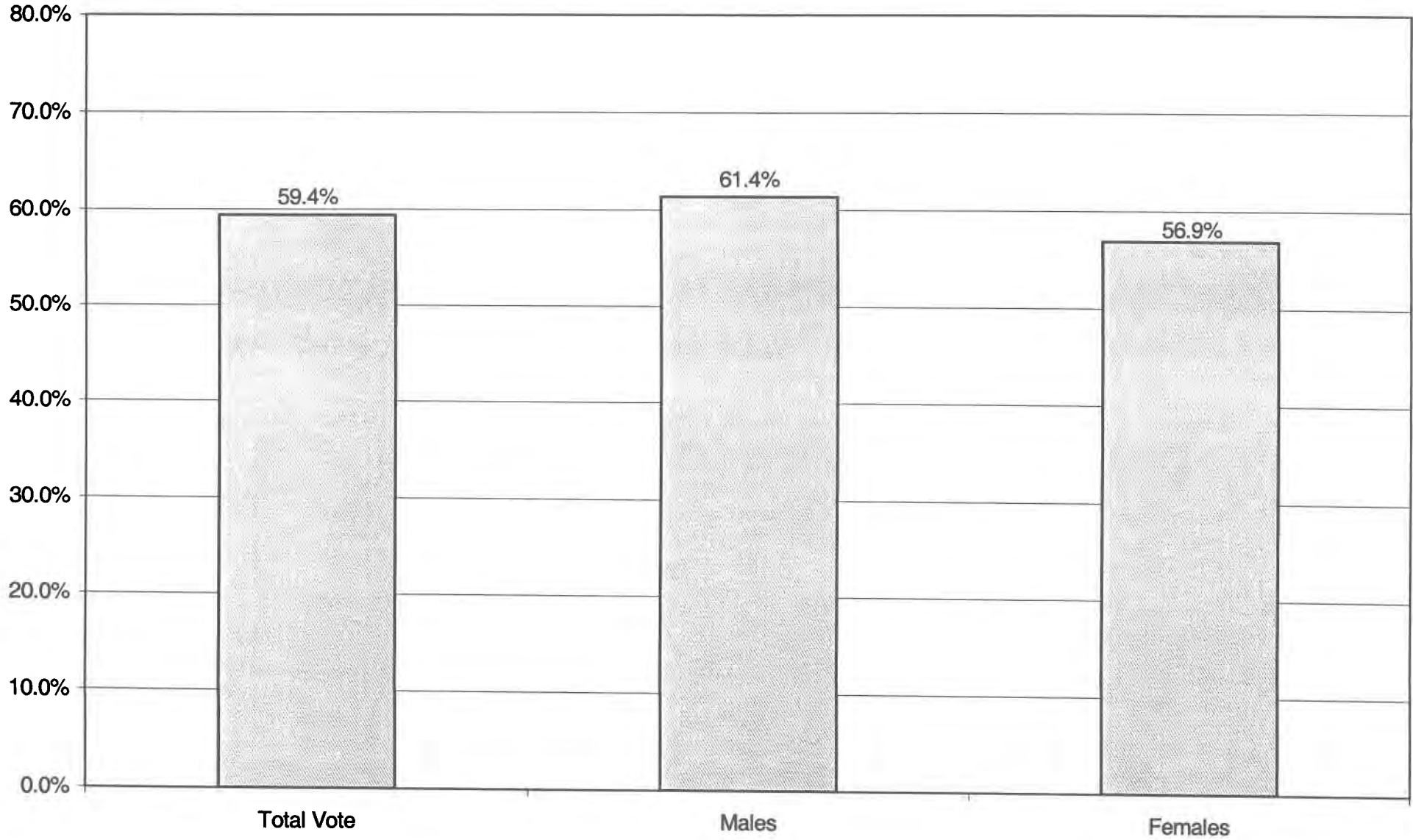
LEGISLATIVE DISTRICT OR TOWN	NDOB			18-24			25-34			35-44		
	VOTED	REGISTERED	TURNOUT	VOTED	REGISTERED	TURNOUT	VOTED	REGISTERED	TURNOUT	VOTED	REGISTERED	TURNOUT
<b>CITY</b>												
Leg. Dist. 06	1	1	100.00 %	3	7	42.86 %	12	31	38.71 %	9	16	56.25 %
Leg. Dist. 07	0	0	0.00 %	0	0	0.00 %	0	3	0.00 %	4	7	57.14 %
Leg. Dist. 21	3	3	100.00 %	6	12	50.00 %	7	23	30.43 %	19	32	59.38 %
Leg. Dist. 22	0	0	0.00 %	1	6	16.67 %	4	11	36.36 %	5	11	45.45 %
Leg. Dist. 23	1	1	100.00 %	4	20	20.00 %	9	16	56.25 %	17	27	62.96 %
Leg. Dist. 24	2	2	100.00 %	1	11	9.09 %	8	14	57.14 %	11	18	61.11 %
Leg. Dist. 25	2	3	66.67 %	1	6	16.67 %	0	4	0.00 %	10	20	50.00 %
Leg. Dist. 26	2	2	100.00 %	3	11	27.27 %	10	31	32.26 %	27	41	65.85 %
Leg. Dist. 27	2	2	100.00 %	2	10	20.00 %	10	15	66.67 %	14	27	51.85 %
Leg. Dist. 28	0	0	0.00 %	1	6	16.67 %	8	23	34.78 %	20	36	55.56 %
Leg. Dist. 29	0	0	0.00 %	4	15	26.67 %	10	21	47.62 %	10	25	40.00 %
<b>TOTAL:</b>	<b>13</b>	<b>14</b>	<b>92.86 %</b>	<b>26</b>	<b>104</b>	<b>25.00 %</b>	<b>78</b>	<b>192</b>	<b>40.63 %</b>	<b>146</b>	<b>260</b>	<b>56.15 %</b>
<b>TOWNS</b>												
Brighton	5	5	100.00 %	6	15	40.00 %	13	32	40.63 %	25	39	64.10 %
Chili	3	3	100.00 %	14	42	33.33 %	47	80	58.75 %	80	121	66.12 %
Clarkson	0	0	0.00 %	2	8	25.00 %	19	31	61.29 %	16	31	51.61 %
East Rochester	1	1	100.00 %	1	1	100.00 %	5	9	55.56 %	20	30	66.67 %
Gates	1	2	50.00 %	3	22	13.64 %	32	78	41.03 %	67	113	59.29 %
Greece	11	15	73.33 %	27	128	21.09 %	85	234	36.32 %	215	455	47.25 %
Hamlin	0	0	0.00 %	4	11	36.36 %	9	22	40.91 %	35	52	67.31 %
Henrietta	2	3	66.67 %	5	29	17.24 %	41	78	52.56 %	82	147	55.78 %
Irondequoit	10	12	83.33 %	18	55	32.73 %	54	128	42.19 %	111	168	66.07 %
Mendon	0	0	0.00 %	1	9	11.11 %	10	18	55.56 %	21	26	80.77 %
Ogden	2	2	100.00 %	6	29	20.69 %	33	54	61.11 %	63	106	59.43 %
Parma	0	0	0.00 %	3	18	16.67 %	23	51	45.10 %	47	66	71.21 %
Penfield	1	3	33.33 %	12	28	42.86 %	23	44	52.27 %	63	100	63.00 %
Perinton	0	1	0.00 %	3	26	11.54 %	18	50	36.00 %	52	100	52.00 %
Pittsford	3	4	75.00 %	2	10	20.00 %	16	30	53.33 %	27	37	72.97 %
Riga	0	0	0.00 %	2	4	50.00 %	11	17	64.71 %	15	25	60.00 %
Rush	0	0	0.00 %	1	4	25.00 %	2	4	50.00 %	9	16	56.25 %
Sweden	0	0	0.00 %	1	12	8.33 %	8	19	42.11 %	25	49	51.02 %
Webster	1	2	50.00 %	9	42	21.43 %	44	87	50.57 %	85	144	59.03 %
Wheatland	0	0	0.00 %	2	8	25.00 %	4	10	40.00 %	11	20	55.00 %
<b>TOTAL:</b>	<b>40</b>	<b>53</b>	<b>75.47 %</b>	<b>122</b>	<b>501</b>	<b>24.35 %</b>	<b>497</b>	<b>1,076</b>	<b>46.19 %</b>	<b>1,069</b>	<b>1,845</b>	<b>57.94 %</b>
<b>GRAND TOTAL:</b>	<b>53</b>	<b>67</b>	<b>79.10 %</b>	<b>148</b>	<b>605</b>	<b>24.46 %</b>	<b>575</b>	<b>1,268</b>	<b>45.35 %</b>	<b>1,215</b>	<b>2,105</b>	<b>57.72 %</b>

2003 GENERAL ELECTION  
CONSERVATIVE TURNOUT BY AGE

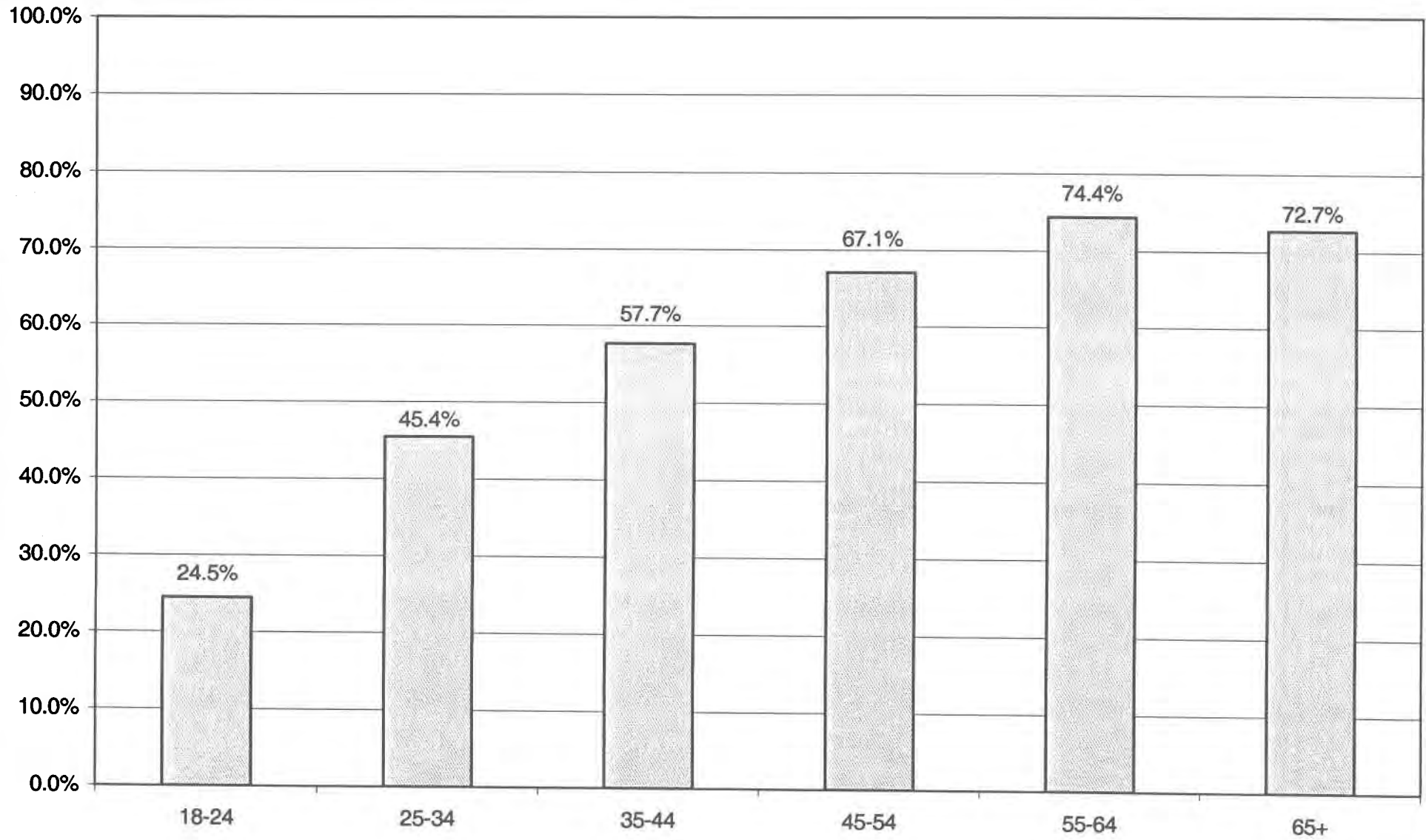
LT/LD SUMMARY  
Part 2 of 2

LEGISLATIVE DISTRICT OR TOWN	45-54			55-64			65+		
	VOTED	REGISTERED	TURNOUT	VOTED	REGISTERED	TURNOUT	VOTED	REGISTERED	TURNOUT
<b>CITY</b>									
Leg. Dist. 06	19	26	73.08 %	5	7	71.43 %	5	8	62.50 %
Leg. Dist. 07	11	14	78.57 %	3	4	75.00 %	1	2	50.00 %
Leg. Dist. 21	18	35	51.43 %	12	13	92.31 %	4	4	100.00 %
Leg. Dist. 22	4	7	57.14 %	2	6	33.33 %	2	2	100.00 %
Leg. Dist. 23	5	19	26.32 %	10	13	76.92 %	10	12	83.33 %
Leg. Dist. 24	13	20	65.00 %	6	10	60.00 %	8	11	72.73 %
Leg. Dist. 25	8	12	66.67 %	4	5	80.00 %	5	6	83.33 %
Leg. Dist. 26	22	37	59.46 %	12	18	66.67 %	6	8	75.00 %
Leg. Dist. 27	15	26	57.69 %	8	9	88.89 %	0	2	0.00 %
Leg. Dist. 28	19	44	43.18 %	15	16	93.75 %	12	16	75.00 %
Leg. Dist. 29	11	26	42.31 %	7	13	53.85 %	5	5	100.00 %
<b>TOTAL:</b>	<b>145</b>	<b>266</b>	<b>54.51 %</b>	<b>84</b>	<b>114</b>	<b>73.68 %</b>	<b>58</b>	<b>76</b>	<b>76.32 %</b>
<b>TOWNS</b>									
Brighton	29	42	69.05 %	19	31	61.29 %	27	40	67.50 %
Chili	76	98	77.55 %	62	79	78.48 %	33	40	82.50 %
Clarkson	14	24	58.33 %	5	7	71.43 %	1	2	50.00 %
East Rochester	16	21	76.19 %	3	7	42.86 %	1	2	50.00 %
Gates	63	84	75.00 %	46	59	77.97 %	16	26	61.54 %
Greece	229	382	59.95 %	162	212	76.42 %	93	141	65.96 %
Hamlin	23	35	65.71 %	9	14	64.29 %	2	3	66.67 %
Henrietta	96	137	70.07 %	62	93	66.67 %	31	43	72.09 %
Irondequoit	135	178	75.84 %	72	107	67.29 %	57	80	71.25 %
Mendon	17	24	70.83 %	15	18	83.33 %	3	4	75.00 %
Ogden	72	95	75.79 %	32	43	74.42 %	18	23	78.26 %
Parma	41	55	74.55 %	26	37	70.27 %	11	13	84.62 %
Penfield	78	123	63.41 %	43	58	74.14 %	28	35	80.00 %
Perinton	75	110	68.18 %	92	118	77.97 %	39	56	69.64 %
Pittsford	31	52	59.62 %	35	46	76.09 %	16	18	88.89 %
Riga	13	18	72.22 %	8	13	61.54 %	3	4	75.00 %
Rush	13	15	86.67 %	9	9	100.00 %	2	3	66.67 %
Sweden	20	28	71.43 %	9	10	90.00 %	2	5	40.00 %
Webster	106	139	76.26 %	66	81	81.48 %	35	42	83.33 %
Wheatland	14	20	70.00 %	8	9	88.89 %	3	3	100.00 %
<b>TOTAL:</b>	<b>1,161</b>	<b>1,680</b>	<b>69.11 %</b>	<b>783</b>	<b>1,051</b>	<b>74.50 %</b>	<b>421</b>	<b>583</b>	<b>72.21 %</b>
<b>GRAND TOTAL:</b>	<b>1,306</b>	<b>1,946</b>	<b>67.11 %</b>	<b>867</b>	<b>1,165</b>	<b>74.42 %</b>	<b>479</b>	<b>659</b>	<b>72.69 %</b>

# CONSERVATIVE TURNOUT - TOTAL AND GENDER 2003 GENERAL ELECTION



# CONSERVATIVE TURNOUT BY AGE GROUP 2003 GENERAL ELECTION



# **WORKING FAMILIES SUMMARY**

2003 GENERAL ELECTION  
WORKING FAMILIES TURNOUT BY GENDER

LT/LD SUMMARY

LEGISLATIVE DISTRICT OR TOWN	TOTAL VOTERS			MALES			FEMALES		
	VOTED	REGISTERED	TURNOUT	VOTED	REGISTERED	TURNOUT	VOTED	REGISTERED	TURNOUT
<b>CITY</b>									
Leg. Dist. 06	0	4	0.00 %	0	1	0.00 %	0	3	0.00 %
Leg. Dist. 07	0	0	0.00 %	0	0	0.00 %	0	0	0.00 %
Leg. Dist. 21	3	30	10.00 %	1	11	9.09 %	2	19	10.53 %
Leg. Dist. 22	0	33	0.00 %	0	12	0.00 %	0	21	0.00 %
Leg. Dist. 23	4	17	23.53 %	2	7	28.57 %	2	10	20.00 %
Leg. Dist. 24	3	6	50.00 %	1	3	33.33 %	2	3	66.67 %
Leg. Dist. 25	5	21	23.81 %	3	14	21.43 %	2	7	28.57 %
Leg. Dist. 26	7	17	41.18 %	5	10	50.00 %	2	7	28.57 %
Leg. Dist. 27	11	28	39.29 %	3	8	37.50 %	8	20	40.00 %
Leg. Dist. 28	5	34	14.71 %	2	11	18.18 %	3	23	13.04 %
Leg. Dist. 29	1	22	4.55 %	1	7	14.29 %	0	15	0.00 %
<b>TOTAL:</b>	<b>39</b>	<b>212</b>	<b>18.40 %</b>	<b>18</b>	<b>84</b>	<b>21.43 %</b>	<b>21</b>	<b>128</b>	<b>16.41 %</b>
<b>TOWNS</b>									
Brighton	7	13	53.85 %	4	6	66.67 %	3	7	42.86 %
Chili	9	17	52.94 %	7	11	63.64 %	2	6	33.33 %
Clarkson	2	4	50.00 %	1	1	100.00 %	1	3	33.33 %
East Rochester	0	3	0.00 %	0	1	0.00 %	0	2	0.00 %
Gates	3	15	20.00 %	1	6	16.67 %	2	9	22.22 %
Greece	17	69	24.64 %	7	21	33.33 %	10	48	20.83 %
Hamlin	1	5	20.00 %	0	2	0.00 %	1	3	33.33 %
Henrietta	3	18	16.67 %	1	8	12.50 %	2	10	20.00 %
Irondequoit	10	31	32.26 %	2	14	14.29 %	8	17	47.06 %
Mendon	2	3	66.67 %	1	2	50.00 %	1	1	100.00 %
Ogden	5	14	35.71 %	2	8	25.00 %	3	6	50.00 %
Parma	3	15	20.00 %	2	9	22.22 %	1	6	16.67 %
Penfield	2	15	13.33 %	0	6	0.00 %	2	9	22.22 %
Perinton	1	10	10.00 %	1	4	25.00 %	0	6	0.00 %
Pittsford	5	6	83.33 %	1	2	50.00 %	4	4	100.00 %
Riga	2	6	33.33 %	1	3	33.33 %	1	3	33.33 %
Rush	2	3	66.67 %	2	3	66.67 %	0	0	0.00 %
Sweden	5	9	55.56 %	2	3	66.67 %	3	6	50.00 %
Webster	4	15	26.67 %	4	5	80.00 %	0	10	0.00 %
Wheatland	1	3	33.33 %	1	3	33.33 %	0	0	0.00 %
<b>TOTAL:</b>	<b>84</b>	<b>274</b>	<b>30.66 %</b>	<b>40</b>	<b>118</b>	<b>33.90 %</b>	<b>44</b>	<b>156</b>	<b>28.21 %</b>
<b>GRAND TOTAL:</b>	<b>123</b>	<b>486</b>	<b>25.31 %</b>	<b>58</b>	<b>202</b>	<b>28.71 %</b>	<b>65</b>	<b>284</b>	<b>22.89 %</b>

2003 GENERAL ELECTION  
WORKING FAMILIES TURNOUT BY AGE

LT/LD SUMMARY

Part 1 of 2

LEGISLATIVE DISTRICT OR TOWN	NDOB			18-24			25-34			35-44		
	VOTED	REGISTERED	TURNOUT	VOTED	REGISTERED	TURNOUT	VOTED	REGISTERED	TURNOUT	VOTED	REGISTERED	TURNOUT
<b>CITY</b>												
Leg. Dist. 06	0	0	0.00 %	0	1	0.00 %	0	2	0.00 %	0	1	0.00 %
Leg. Dist. 07	0	0	0.00 %	0	0	0.00 %	0	0	0.00 %	0	0	0.00 %
Leg. Dist. 21	0	0	0.00 %	1	7	14.29 %	2	14	14.29 %	0	6	0.00 %
Leg. Dist. 22	0	0	0.00 %	0	12	0.00 %	0	13	0.00 %	0	6	0.00 %
Leg. Dist. 23	0	0	0.00 %	2	5	40.00 %	0	5	0.00 %	1	5	20.00 %
Leg. Dist. 24	0	0	0.00 %	0	0	0.00 %	2	4	50.00 %	1	1	100.00 %
Leg. Dist. 25	0	0	0.00 %	0	3	0.00 %	1	5	20.00 %	2	9	22.22 %
Leg. Dist. 26	0	0	0.00 %	0	4	0.00 %	2	7	28.57 %	2	2	100.00 %
Leg. Dist. 27	0	0	0.00 %	2	11	18.18 %	5	7	71.43 %	2	7	28.57 %
Leg. Dist. 28	0	0	0.00 %	0	4	0.00 %	2	15	13.33 %	2	11	18.18 %
Leg. Dist. 29	0	0	0.00 %	1	7	14.29 %	0	8	0.00 %	0	6	0.00 %
<b>TOTAL:</b>	<b>0</b>	<b>0</b>	<b>0.00 %</b>	<b>6</b>	<b>54</b>	<b>11.11 %</b>	<b>14</b>	<b>80</b>	<b>17.50 %</b>	<b>10</b>	<b>54</b>	<b>18.52 %</b>
<b>TOWNS</b>												
Brighton	0	0	0.00 %	0	1	0.00 %	1	5	20.00 %	3	3	100.00 %
Chili	0	0	0.00 %	1	4	25.00 %	0	4	0.00 %	4	5	80.00 %
Clarkson	0	0	0.00 %	0	0	0.00 %	0	0	0.00 %	2	4	50.00 %
East Rochester	0	0	0.00 %	0	1	0.00 %	0	2	0.00 %	0	0	0.00 %
Gates	0	0	0.00 %	0	4	0.00 %	0	4	0.00 %	2	6	33.33 %
Greece	0	0	0.00 %	1	7	14.29 %	5	32	15.63 %	8	20	40.00 %
Hamlin	0	0	0.00 %	0	2	0.00 %	0	2	0.00 %	1	1	100.00 %
Henrietta	0	0	0.00 %	0	0	0.00 %	1	5	20.00 %	1	10	10.00 %
Irondequoit	0	0	0.00 %	1	6	16.67 %	1	10	10.00 %	3	10	30.00 %
Mendon	0	0	0.00 %	0	1	0.00 %	1	1	100.00 %	0	0	0.00 %
Ogden	0	0	0.00 %	0	1	0.00 %	1	3	33.33 %	4	8	50.00 %
Parma	0	0	0.00 %	0	0	0.00 %	0	3	0.00 %	2	9	22.22 %
Penfield	0	0	0.00 %	0	3	0.00 %	0	2	0.00 %	2	7	28.57 %
Perinton	0	0	0.00 %	0	2	0.00 %	1	3	33.33 %	0	3	0.00 %
Pittsford	0	0	0.00 %	0	0	0.00 %	0	1	0.00 %	3	3	100.00 %
Riga	0	0	0.00 %	0	1	0.00 %	0	0	0.00 %	1	4	25.00 %
Rush	0	0	0.00 %	1	1	100.00 %	1	1	100.00 %	0	1	0.00 %
Sweden	0	0	0.00 %	1	2	50.00 %	2	4	50.00 %	2	3	66.67 %
Webster	0	0	0.00 %	0	1	0.00 %	2	5	40.00 %	1	6	16.67 %
Wheatland	0	0	0.00 %	0	0	0.00 %	0	1	0.00 %	1	2	50.00 %
<b>TOTAL:</b>	<b>0</b>	<b>0</b>	<b>0.00 %</b>	<b>5</b>	<b>37</b>	<b>13.51 %</b>	<b>16</b>	<b>88</b>	<b>18.18 %</b>	<b>40</b>	<b>105</b>	<b>38.10 %</b>
<b>GRAND TOTAL:</b>	<b>0</b>	<b>0</b>	<b>0.00 %</b>	<b>11</b>	<b>91</b>	<b>12.09 %</b>	<b>30</b>	<b>168</b>	<b>17.86 %</b>	<b>50</b>	<b>159</b>	<b>31.45 %</b>

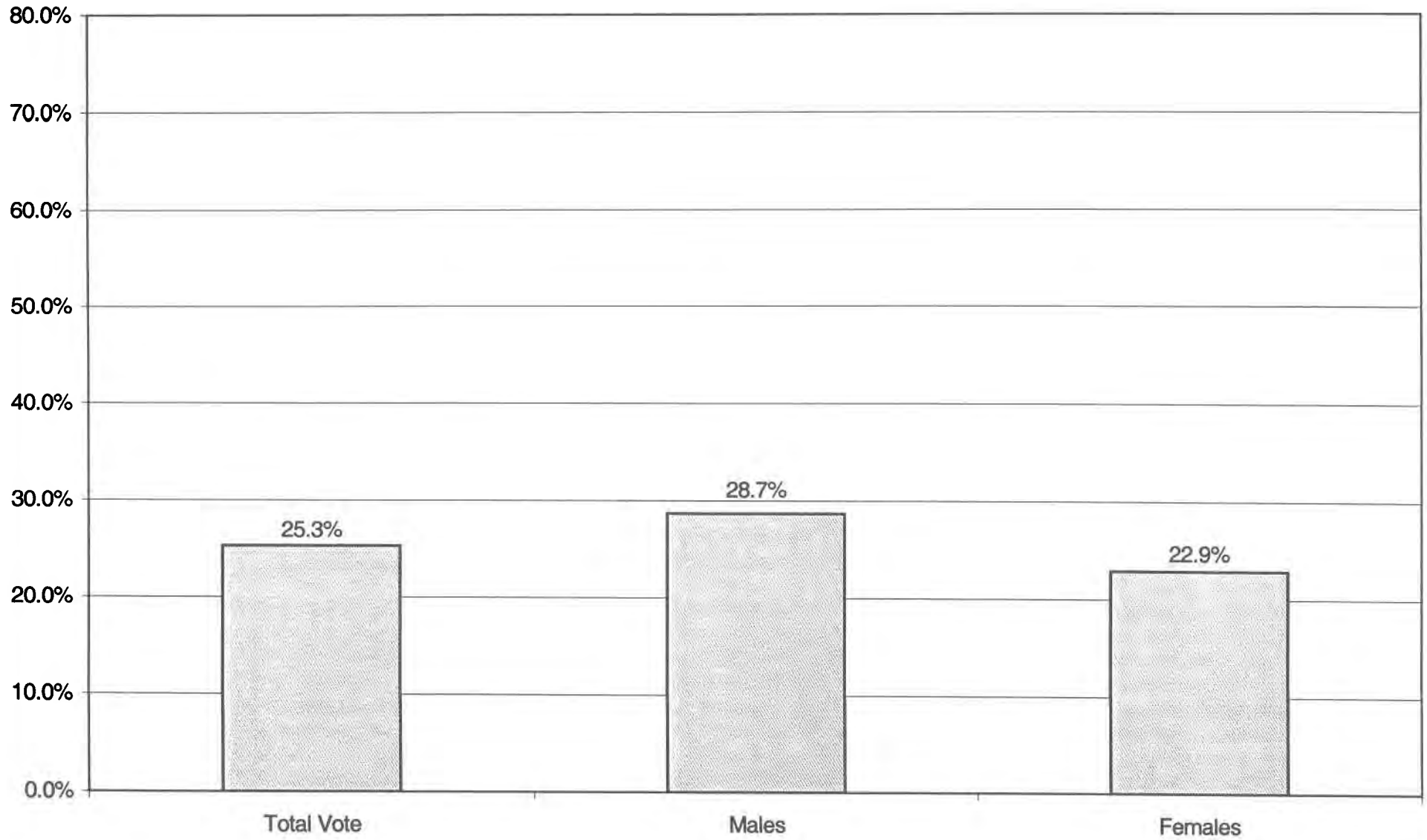


2003 GENERAL ELECTION  
WORKING FAMILIES TURNOUT BY AGE

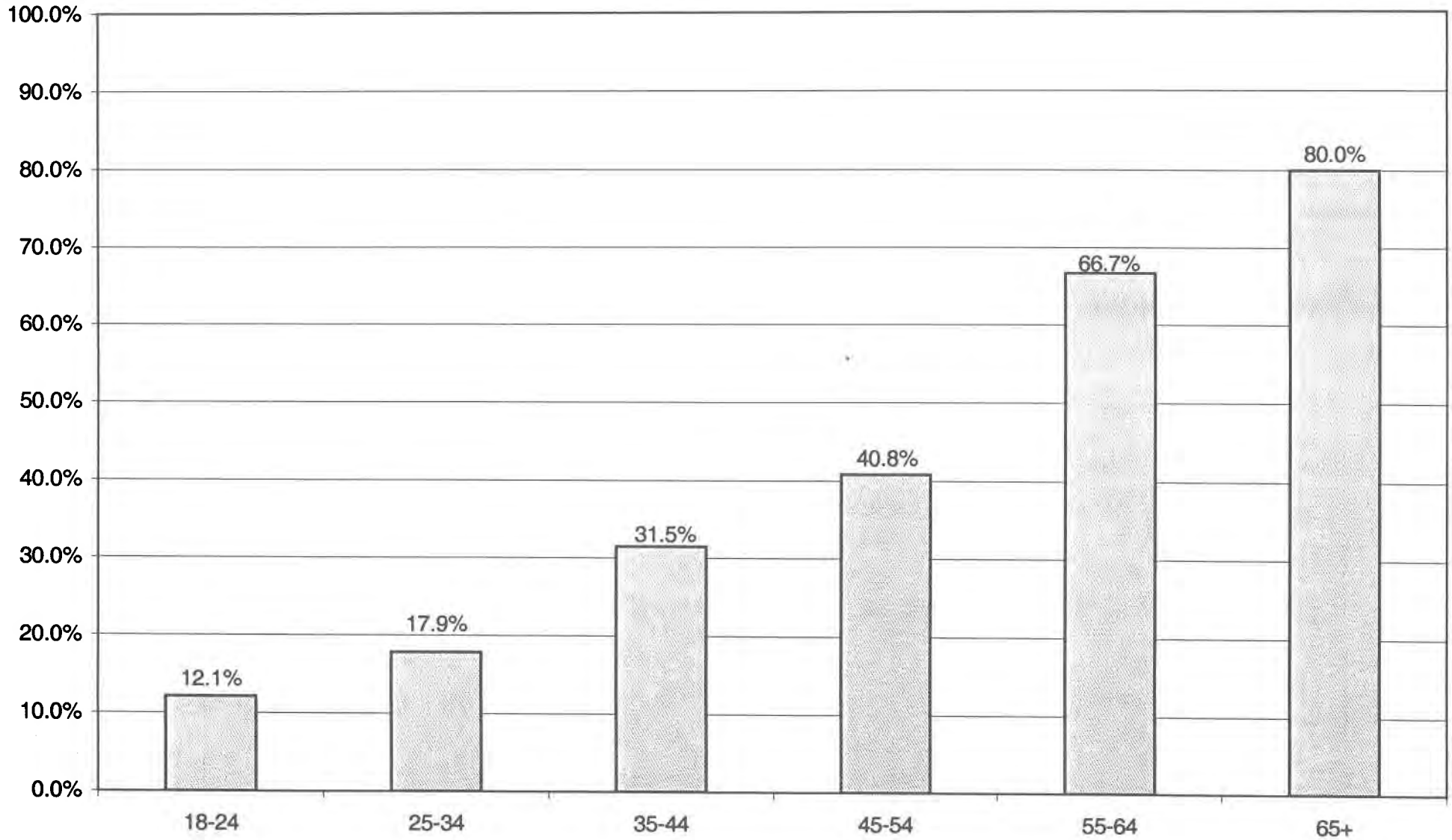
LT/LD SUMMARY  
Part 2 of 2

LEGISLATIVE DISTRICT OR TOWN CITY	45-54			55-64			65+		
	VOTED	REGISTERED	TURNOUT	VOTED	REGISTERED	TURNOUT	VOTED	REGISTERED	TURNOUT
Leg. Dist. 06	0	0	0.00 %	0	0	0.00 %	0	0	0.00 %
Leg. Dist. 07	0	0	0.00 %	0	0	0.00 %	0	0	0.00 %
Leg. Dist. 21	0	3	0.00 %	0	0	0.00 %	0	0	0.00 %
Leg. Dist. 22	0	1	0.00 %	0	0	0.00 %	0	1	0.00 %
Leg. Dist. 23	0	1	0.00 %	0	0	0.00 %	1	1	100.00 %
Leg. Dist. 24	0	1	0.00 %	0	0	0.00 %	0	0	0.00 %
Leg. Dist. 25	0	2	0.00 %	1	2	50.00 %	0	0	0.00 %
Leg. Dist. 26	1	2	50.00 %	0	0	0.00 %	2	2	100.00 %
Leg. Dist. 27	1	3	33.33 %	0	0	0.00 %	0	0	0.00 %
Leg. Dist. 28	0	3	0.00 %	1	1	100.00 %	0	0	0.00 %
Leg. Dist. 29	0	0	0.00 %	0	1	0.00 %	0	0	0.00 %
<b>TOTAL:</b>	<b>2</b>	<b>16</b>	<b>12.50 %</b>	<b>2</b>	<b>4</b>	<b>50.00 %</b>	<b>3</b>	<b>4</b>	<b>75.00 %</b>
<b>TOWNS</b>									
Brighton	3	4	75.00 %	0	0	0.00 %	0	0	0.00 %
Chili	4	4	100.00 %	0	0	0.00 %	0	0	0.00 %
Clarkson	0	0	0.00 %	0	0	0.00 %	0	0	0.00 %
East Rochester	0	0	0.00 %	0	0	0.00 %	0	0	0.00 %
Gates	0	0	0.00 %	1	1	100.00 %	0	0	0.00 %
Greece	2	6	33.33 %	0	2	0.00 %	1	2	50.00 %
Hamlin	0	0	0.00 %	0	0	0.00 %	0	0	0.00 %
Henrietta	0	2	0.00 %	1	1	100.00 %	0	0	0.00 %
Irondequoit	3	4	75.00 %	0	0	0.00 %	1	1	100.00 %
Mendon	0	0	0.00 %	1	0	0.00 %	1	1	100.00 %
Ogden	0	2	0.00 %	0	0	0.00 %	0	0	0.00 %
Parma	1	3	33.33 %	0	0	0.00 %	0	0	0.00 %
Penfield	0	3	0.00 %	0	0	0.00 %	0	0	0.00 %
Perinton	0	2	0.00 %	0	0	0.00 %	0	0	0.00 %
Pittsford	1	1	100.00 %	0	0	0.00 %	1	1	100.00 %
Riga	1	1	100.00 %	0	0	0.00 %	0	0	0.00 %
Rush	0	0	0.00 %	0	0	0.00 %	0	0	0.00 %
Sweden	0	0	0.00 %	0	0	0.00 %	0	0	0.00 %
Webster	0	1	0.00 %	0	1	0.00 %	1	1	100.00 %
Wheatland	0	0	0.00 %	0	0	0.00 %	0	0	0.00 %
<b>TOTAL:</b>	<b>15</b>	<b>33</b>	<b>45.45 %</b>	<b>3</b>	<b>5</b>	<b>60.00 %</b>	<b>5</b>	<b>6</b>	<b>83.33 %</b>
<b>GRAND TOTAL:</b>	<b>17</b>	<b>49</b>	<b>40.82 %</b>	<b>5</b>	<b>9</b>	<b>55.56 %</b>	<b>8</b>	<b>10</b>	<b>80.00 %</b>

# WORKING FAMILIES TURNOUT - TOTAL AND GENDER 2003 GENERAL ELECTION



# WORKING FAMILIES TURNOUT BY AGE GROUP 2003 GENERAL ELECTION



# **BLANKS SUMMARY**

2003 GENERAL ELECTION  
BLANK TURNOUT BY GENDER

LT/LD SUMMARY

LEGISLATIVE DISTRICT OR TOWN	TOTAL VOTERS			MALES			FEMALES		
	VOTED	REGISTERED	TURNOUT	VOTED	REGISTERED	TURNOUT	VOTED	REGISTERED	TURNOUT
<b>CITY</b>									
Leg. Dist. 06	330	771	42.80 %	158	350	45.14 %	172	421	40.86 %
Leg. Dist. 07	152	345	44.06 %	76	165	46.06 %	76	180	42.22 %
Leg. Dist. 21	1,021	2,615	39.04 %	520	1,264	41.14 %	501	1,351	37.08 %
Leg. Dist. 22	250	1,418	17.63 %	115	626	18.37 %	135	792	17.05 %
Leg. Dist. 23	1,458	3,071	47.48 %	777	1,566	49.62 %	681	1,505	45.25 %
Leg. Dist. 24	827	1,723	48.00 %	422	866	48.73 %	405	857	47.26 %
Leg. Dist. 25	523	1,583	33.04 %	283	821	34.47 %	240	762	31.50 %
Leg. Dist. 26	617	1,614	38.23 %	311	760	40.92 %	306	854	35.83 %
Leg. Dist. 27	712	2,002	35.56 %	352	999	35.24 %	360	1,003	35.89 %
Leg. Dist. 28	546	1,748	31.24 %	285	770	37.01 %	261	978	26.69 %
Leg. Dist. 29	522	1,824	28.62 %	254	824	30.83 %	268	1,000	26.80 %
<b>TOTAL:</b>	<b>6,958</b>	<b>18,714</b>	<b>37.18 %</b>	<b>3,553</b>	<b>9,011</b>	<b>39.43 %</b>	<b>3,405</b>	<b>9,703</b>	<b>35.09 %</b>
<b>TOWNS</b>									
Brighton	2,651	5,090	52.08 %	1,295	2,434	53.20 %	1,356	2,656	51.05 %
Chili	2,046	4,353	47.00 %	1,029	2,130	48.31 %	1,017	2,223	45.75 %
Clarkson	341	835	40.84 %	173	426	40.61 %	168	409	41.08 %
East Rochester	456	962	47.40 %	209	424	49.29 %	247	538	45.91 %
Gates	1,694	4,243	39.92 %	838	2,053	40.82 %	856	2,190	39.09 %
Greece	6,390	15,223	41.98 %	3,194	7,225	44.21 %	3,196	7,998	39.96 %
Hamlin	537	1,274	42.15 %	292	624	46.79 %	245	650	37.69 %
Henrietta	2,171	4,751	45.70 %	1,103	2,365	46.64 %	1,068	2,386	44.76 %
Irondequoit	4,211	8,345	50.46 %	2,087	3,994	52.25 %	2,124	4,351	48.82 %
Mendon	792	1,440	55.00 %	399	716	55.73 %	393	724	54.28 %
Ogden	1,371	2,975	46.08 %	694	1,460	47.53 %	677	1,515	44.69 %
Parma	1,194	2,599	45.94 %	603	1,247	48.36 %	591	1,352	43.71 %
Penfield	3,103	6,122	50.69 %	1,593	2,940	54.18 %	1,510	3,182	47.45 %
Perinton	3,878	7,838	49.48 %	1,971	3,807	51.77 %	1,907	4,031	47.31 %
Pittsford	2,285	4,469	51.13 %	1,132	2,149	52.68 %	1,153	2,320	49.70 %
Riga	428	865	49.48 %	227	446	50.90 %	201	419	47.97 %
Rush	345	663	52.04 %	174	338	51.48 %	171	325	52.62 %
Sweden	707	1,503	47.04 %	354	706	50.14 %	353	797	44.29 %
Webster	3,433	6,927	49.56 %	1,722	3,359	51.27 %	1,711	3,568	47.95 %
Wheatland	365	775	47.10 %	179	379	47.23 %	186	396	46.97 %
<b>TOTAL:</b>	<b>38,398</b>	<b>81,252</b>	<b>47.26 %</b>	<b>19,268</b>	<b>39,222</b>	<b>49.13 %</b>	<b>19,130</b>	<b>42,030</b>	<b>45.52 %</b>
<b>GRAND TOTAL:</b>	<b>45,356</b>	<b>99,966</b>	<b>45.37 %</b>	<b>22,821</b>	<b>48,233</b>	<b>47.31 %</b>	<b>22,535</b>	<b>51,733</b>	<b>43.56 %</b>

2003 GENERAL ELECTION  
BLANK TURNOUT BY AGE

LT/LD SUMMARY  
Part 1 of 2

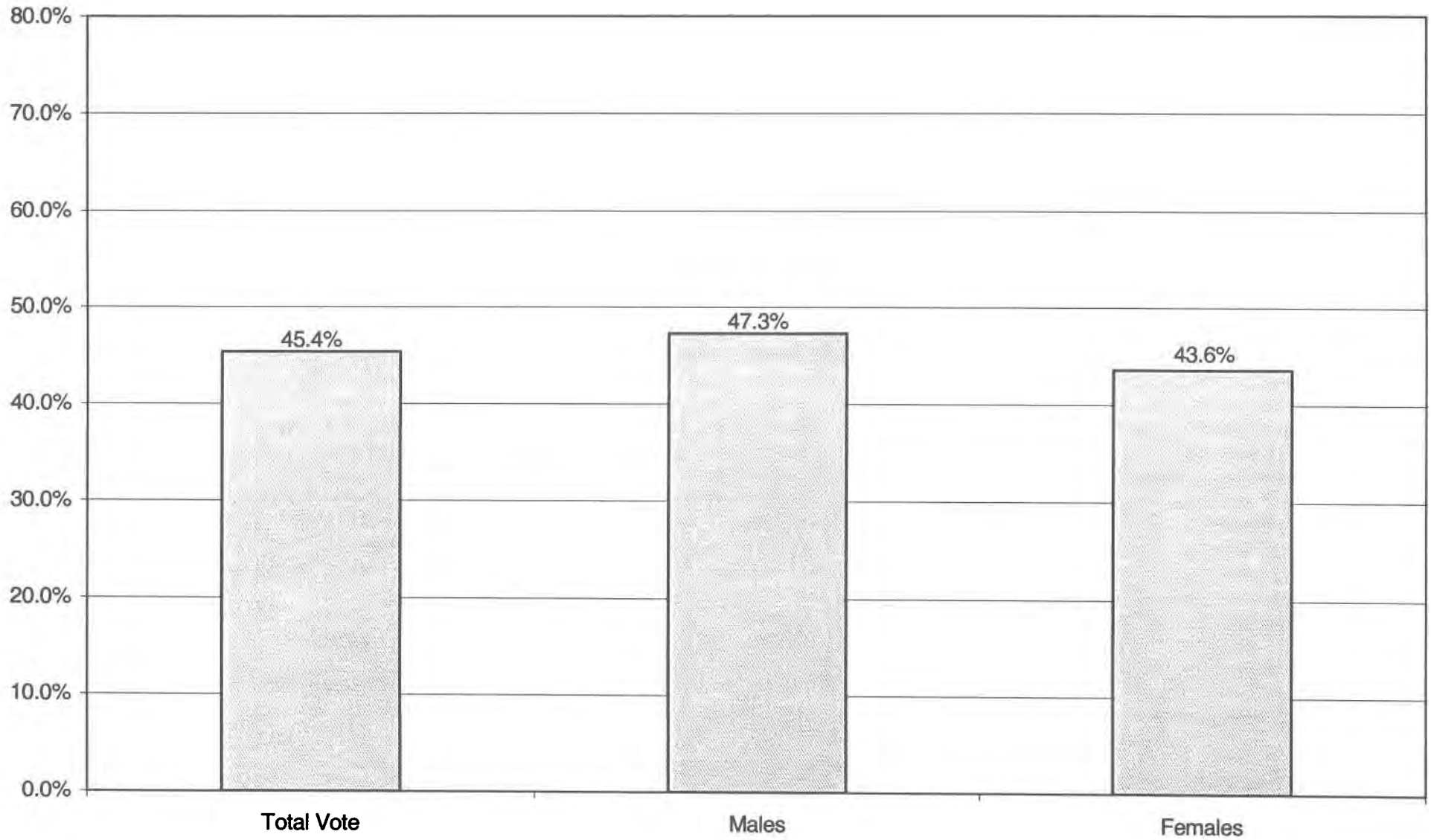
LEGISLATIVE DISTRICT OR TOWN CITY	NDOB			18-24			25-34			35-44		
	VOTED	REGISTERED	TURNOUT	VOTED	REGISTERED	TURNOUT	VOTED	REGISTERED	TURNOUT	VOTED	REGISTERED	TURNOUT
Leg. Dist. 06	2	4	50.00 %	29	123	23.58 %	48	162	29.63 %	85	201	42.29 %
Leg. Dist. 07	1	1	100.00 %	8	47	17.02 %	16	67	23.88 %	39	79	49.37 %
Leg. Dist. 21	11	13	84.62 %	93	516	18.02 %	238	715	33.29 %	249	581	42.86 %
Leg. Dist. 22	5	7	71.43 %	41	355	11.55 %	43	421	10.21 %	59	307	19.22 %
Leg. Dist. 23	23	31	74.19 %	198	757	26.16 %	334	849	39.34 %	304	554	54.87 %
Leg. Dist. 24	12	15	80.00 %	87	322	27.02 %	190	439	43.28 %	178	341	52.20 %
Leg. Dist. 25	4	6	66.67 %	81	400	20.25 %	104	403	25.81 %	102	307	33.22 %
Leg. Dist. 26	4	8	50.00 %	59	313	18.85 %	101	401	25.19 %	184	396	46.46 %
Leg. Dist. 27	12	15	80.00 %	94	418	22.49 %	114	517	22.05 %	177	458	38.65 %
Leg. Dist. 28	14	20	70.00 %	48	331	14.50 %	72	428	16.82 %	138	413	33.41 %
Leg. Dist. 29	18	20	90.00 %	31	359	8.64 %	89	439	20.27 %	135	405	33.33 %
<b>TOTAL:</b>	<b>106</b>	<b>140</b>	<b>75.71 %</b>	<b>769</b>	<b>3,941</b>	<b>19.51 %</b>	<b>1,349</b>	<b>4,841</b>	<b>27.87 %</b>	<b>1,650</b>	<b>4,042</b>	<b>40.82 %</b>
<b>TOWNS</b>												
Brighton	31	47	65.96 %	167	692	24.13 %	361	980	36.84 %	557	1,032	53.97 %
Chili	16	23	69.57 %	114	744	15.32 %	280	913	30.67 %	627	1,127	55.63 %
Clarkson	0	0	0.00 %	18	119	15.13 %	50	203	24.63 %	122	252	48.41 %
East Rochester	8	12	66.67 %	30	164	18.29 %	68	195	34.87 %	112	228	49.12 %
Gates	9	12	75.00 %	107	721	14.84 %	228	901	25.31 %	414	975	42.46 %
Greece	70	99	70.71 %	359	2,503	14.34 %	732	2,865	25.55 %	1,741	3,727	46.71 %
Hamlin	1	1	100.00 %	31	227	13.66 %	87	287	30.31 %	166	346	47.98 %
Henrietta	9	12	75.00 %	137	660	20.76 %	307	1,056	29.07 %	587	1,234	47.57 %
Irondequoit	79	105	75.24 %	223	1,077	20.71 %	548	1,562	35.08 %	1,009	1,895	53.25 %
Mendon	4	4	100.00 %	26	169	15.38 %	93	234	39.74 %	262	433	60.51 %
Ogden	10	13	76.92 %	58	457	12.69 %	180	586	30.72 %	451	865	52.14 %
Parma	2	2	100.00 %	58	392	14.80 %	162	548	29.56 %	406	761	53.35 %
Penfield	25	34	73.53 %	111	726	15.29 %	380	1,096	34.67 %	847	1,561	54.26 %
Perinton	11	14	78.57 %	186	970	19.18 %	446	1,424	31.32 %	1,043	1,947	53.57 %
Pittsford	13	17	76.47 %	79	504	15.67 %	221	687	32.17 %	578	1,097	52.69 %
Riga	1	1	100.00 %	20	122	16.39 %	54	158	34.18 %	132	249	53.01 %
Rush	0	1	0.00 %	17	82	20.73 %	37	97	38.14 %	91	193	47.15 %
Sweden	0	1	0.00 %	49	280	17.50 %	94	303	31.02 %	192	373	51.47 %
Webster	34	41	82.93 %	120	819	14.65 %	419	1,341	31.25 %	1,001	1,865	53.67 %
Wheatland	3	3	100.00 %	20	120	16.67 %	48	147	32.65 %	129	212	60.85 %
<b>TOTAL:</b>	<b>326</b>	<b>442</b>	<b>73.76 %</b>	<b>1,930</b>	<b>11,548</b>	<b>16.71 %</b>	<b>4,795</b>	<b>15,583</b>	<b>30.77 %</b>	<b>10,467</b>	<b>20,372</b>	<b>51.38 %</b>
<b>GRAND TOTAL:</b>	<b>432</b>	<b>582</b>	<b>74.23 %</b>	<b>2,699</b>	<b>15,489</b>	<b>17.43 %</b>	<b>6,144</b>	<b>20,424</b>	<b>30.08 %</b>	<b>12,117</b>	<b>24,414</b>	<b>49.63 %</b>

2003 GENERAL ELECTION  
BLANK TURNOUT BY AGE

LT/LD SUMMARY  
Part 2 of 2

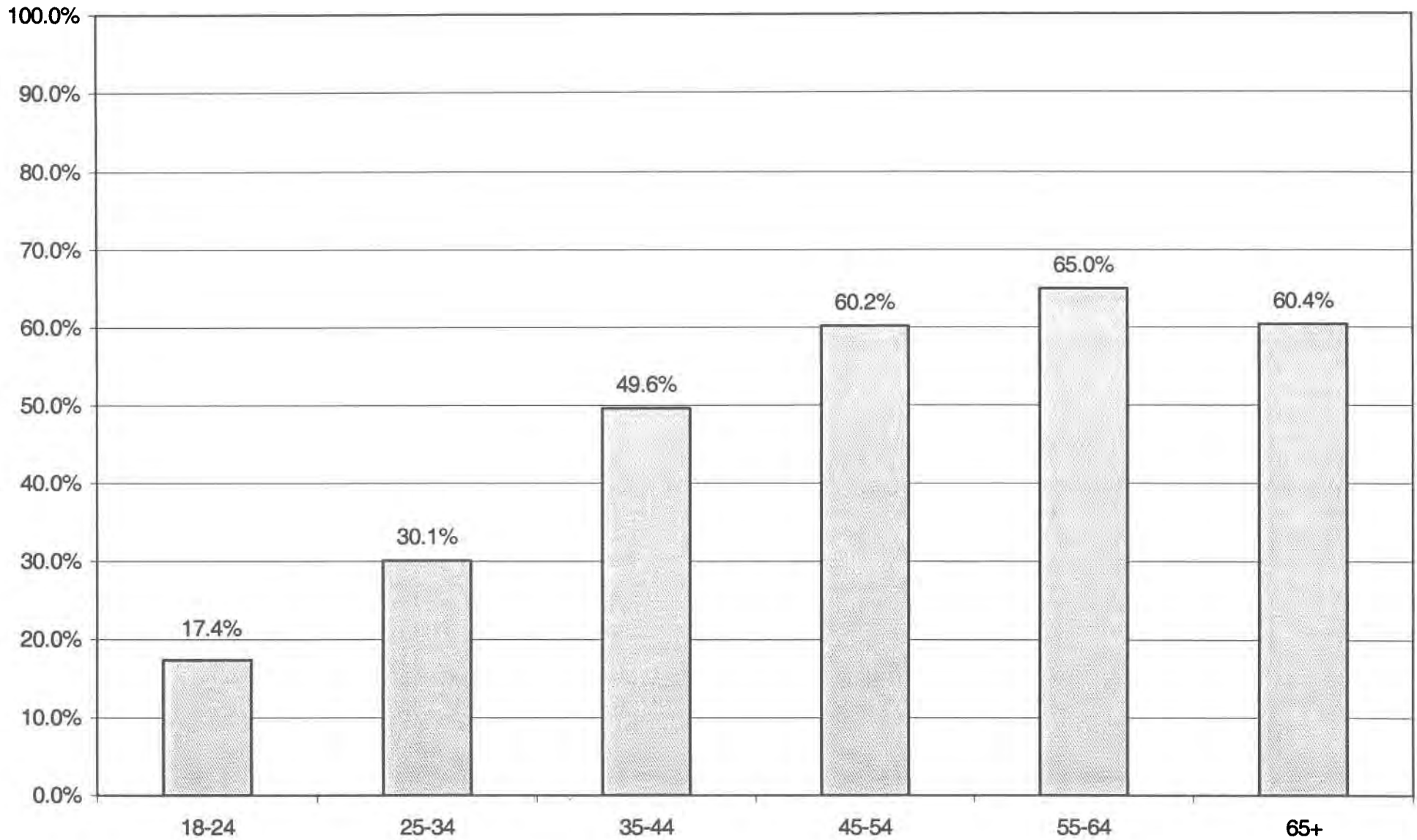
LEGISLATIVE DISTRICT OR TOWN	45-54			55-64			65+		
	VOTED	REGISTERED	TURNOUT	VOTED	REGISTERED	TURNOUT	VOTED	REGISTERED	TURNOUT
<b>CITY</b>									
Leg. Dist. 06	94	163	57.67 %	33	49	67.35 %	39	69	56.52 %
Leg. Dist. 07	40	83	48.19 %	19	29	65.52 %	29	39	74.36 %
Leg. Dist. 21	244	451	54.10 %	92	167	55.09 %	94	172	54.65 %
Leg. Dist. 22	54	202	26.73 %	29	77	37.66 %	19	49	38.78 %
Leg. Dist. 23	330	499	66.13 %	162	218	74.31 %	107	163	65.64 %
Leg. Dist. 24	180	302	59.60 %	87	138	63.04 %	93	166	56.02 %
Leg. Dist. 25	127	237	53.59 %	59	121	48.76 %	46	109	42.20 %
Leg. Dist. 26	166	301	55.15 %	59	102	57.84 %	44	93	47.31 %
Leg. Dist. 27	192	353	54.39 %	77	145	53.10 %	46	96	47.92 %
Leg. Dist. 28	141	309	45.63 %	65	129	50.39 %	64	118	54.24 %
Leg. Dist. 29	120	304	39.47 %	66	151	43.71 %	63	146	43.15 %
<b>TOTAL:</b>	<b>1,688</b>	<b>3,204</b>	<b>52.68 %</b>	<b>748</b>	<b>1,326</b>	<b>56.41 %</b>	<b>644</b>	<b>1,220</b>	<b>52.79 %</b>
<b>TOWNS</b>									
Brighton	737	1,123	65.63 %	325	473	68.71 %	473	743	63.66 %
Chili	614	953	64.43 %	213	328	64.94 %	182	265	68.68 %
Clarkson	89	161	55.28 %	34	56	60.71 %	28	44	63.64 %
East Rochester	120	188	63.83 %	57	82	69.51 %	61	93	65.59 %
Gates	423	781	54.16 %	249	405	61.48 %	264	448	58.93 %
Greece	1,965	3,475	56.55 %	789	1,269	62.17 %	734	1,285	57.12 %
Hamlin	173	280	61.79 %	54	85	63.53 %	25	48	52.08 %
Henrietta	599	981	61.06 %	295	453	65.12 %	237	355	66.76 %
Irondequoit	1,217	1,907	63.82 %	539	794	67.88 %	596	1,005	59.30 %
Mendon	248	379	65.44 %	108	139	77.70 %	51	82	62.20 %
Ogden	403	655	61.53 %	178	250	71.20 %	91	149	61.07 %
Parma	329	547	60.15 %	152	197	77.16 %	85	152	55.92 %
Penfield	975	1,522	64.06 %	424	626	67.73 %	341	557	61.22 %
Perinton	1,224	1,944	62.96 %	571	884	64.59 %	397	655	60.61 %
Pittsford	652	1,068	61.05 %	372	549	67.76 %	370	547	67.64 %
Riga	140	210	66.67 %	48	70	68.57 %	33	55	60.00 %
Rush	117	177	66.10 %	57	76	75.00 %	26	37	70.27 %
Sweden	236	342	69.01 %	84	117	71.79 %	52	87	59.77 %
Webster	988	1,578	62.61 %	466	678	68.73 %	405	605	66.94 %
Wheatland	108	182	59.34 %	25	55	45.45 %	32	56	57.14 %
<b>TOTAL:</b>	<b>11,357</b>	<b>18,453</b>	<b>61.55 %</b>	<b>5,040</b>	<b>7,586</b>	<b>66.44 %</b>	<b>4,483</b>	<b>7,268</b>	<b>61.68 %</b>
<b>GRAND TOTAL:</b>	<b>13,045</b>	<b>21,657</b>	<b>60.23 %</b>	<b>5,788</b>	<b>8,912</b>	<b>64.95 %</b>	<b>5,127</b>	<b>8,488</b>	<b>60.40 %</b>

# BLANKS TURNOUT - TOTAL AND GENDER 2003 GENERAL ELECTION



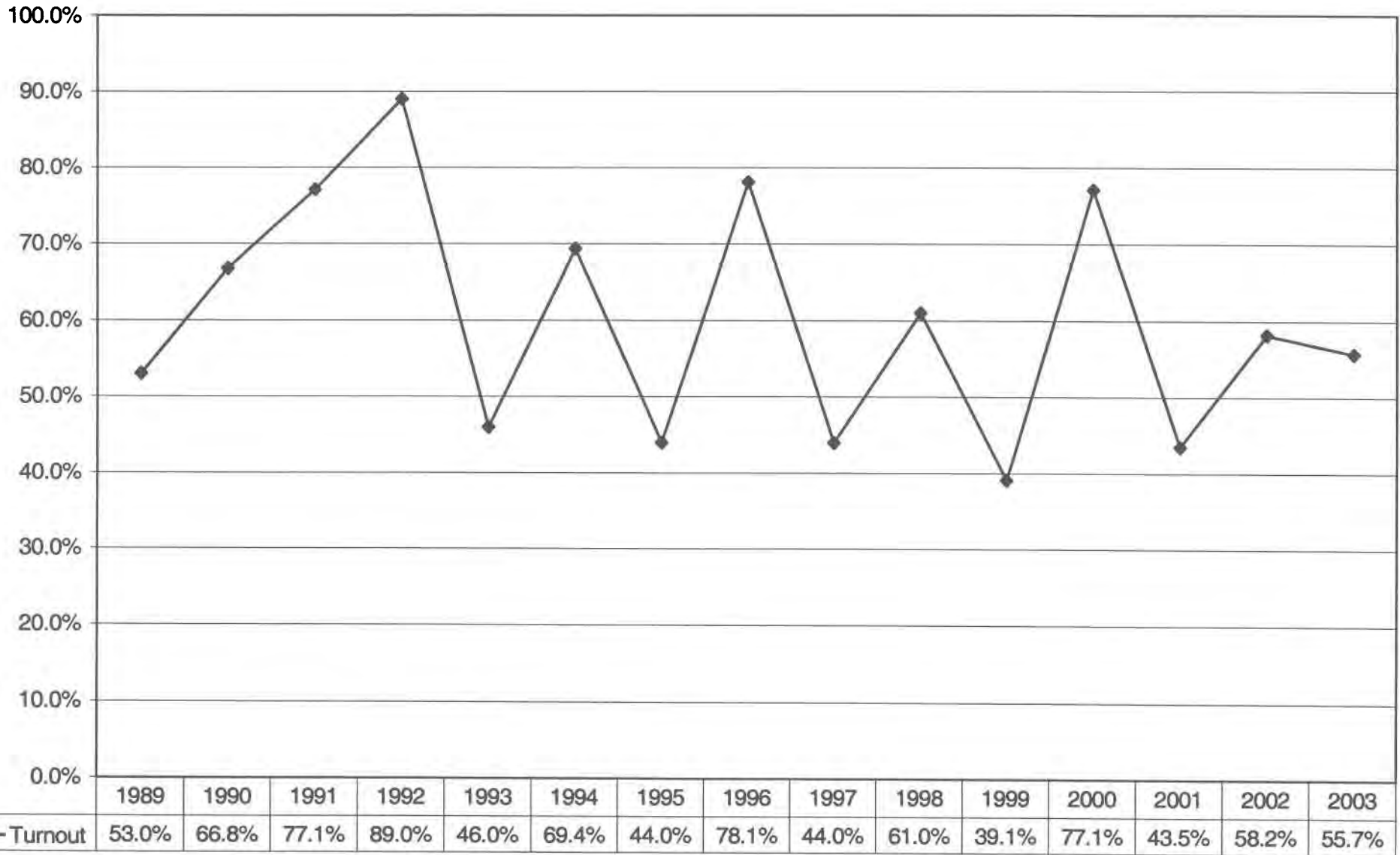


# BLANKS TURNOUT BY AGE GROUP 2003 GENERAL ELECTION

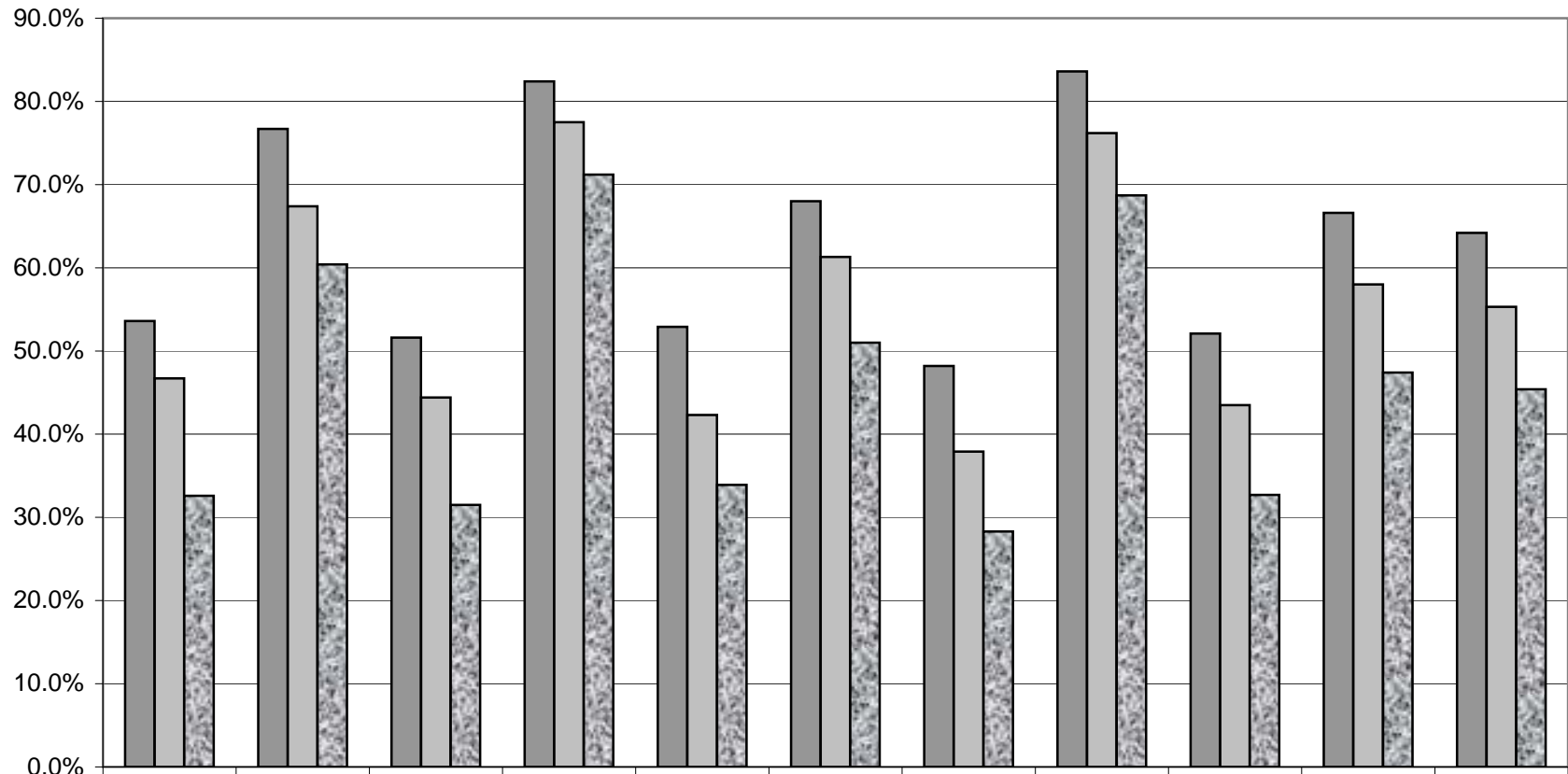


# **HISTORICAL DATA**

# VOTER TURNOUT FOR THE GENERAL ELECTION 1989 Through 2003



## VOTER TURNOUT BY PARTY 1993 Through 2003 General Elections



	1993	1994	1995	1996	1997	1998	1999	2000	2001	2002	2003
■ Republicans	53.6%	76.7%	51.6%	82.4%	52.9%	68.0%	48.2%	83.6%	52.1%	66.6%	64.2%
■ Democrats	46.7%	67.4%	44.4%	77.5%	42.3%	61.3%	37.9%	76.2%	43.5%	58.0%	55.3%
■ Blanks	32.6%	60.4%	31.5%	71.2%	33.9%	51.0%	28.3%	68.7%	32.7%	47.4%	45.4%